

COMPETITION:							Tee:			
DATE:			H/CAP	Strokes Received	TIME:			H/CAP	Strokes Received	PAR 71 SSS 70
Player A					Player C					PAR 71 SSS 69
Player B					Player D					PAR 73 SSS 73

Marker's Score	Hole	White Yards	Yellow Yards	Par	Stroke Index	Gross				Nett Score	Win = + Loss = - Half = 0	Red Yards	Par	Stroke Index
						A	B	C	D					
	1	342	325	4	13							313	4	9
	2	511	491	5	5							416	5	3
	3	174	157	3	15							135	3	15
	4	360	333	4	3							271	4	5
	5	396	391	4	1							385	5	1
	6	385	336	4	7							329	4	7
	7	178	172	3	17							166	3	17
	8	342	324	4	9							319	4	11
	9	325	311	4	11							265	4	13
	OUT	3013	2840	35	OUT							2599	36	

PLEASE AVOID SLOW PLAY AT ALL TIMES

	10	297	287	4	16							282	4	18
	11	312	279	4	12							251	4	10
	12	403	375	4	2							363	5	8
	13	473	464	5	8							457	5	2
	14	315	308	4	6							302	4	4
	15	182	164	3	14							150	3	14
	16	492	480	5	4							420	5	6
	17	127	114	3	18							105	3	16
	18	328	309	4	10							267	4	12
	IN	2929	2780	36	IN							2597	37	
	OUT	3013	2840	35	OUT							2599	36	
	TOTAL	5942	5620	71	TOTAL							5196	73	
	Stableford Points or Par Result		HANDICAP NETT SCORE											

Marker's Sign

Players Sign

LOCAL RULES OF PLAY

• **Players MUST give way to the Public using the Public Rights of way.**

• **Out of Bounds:-** On or beyond the Course boundary or as defined by white stakes.
Internal OOB along drainage ditch between 5th & 6th Fairway only applies to 6th Hole.

• **Penalty Areas:-** Defined by Red or Yellow stakes, penalty area directly in front of the 11th Tee boxes is an Environmentally sensitive area & a no play zone, take relief in accordance with Rules of Golf, or use Drop Zone provided.

• **GUR:-** All concrete, metal or wooden covers of any drainage culverts.
Wooden Safety rail on the 14th Fairway near the path, adjacent to the Bell.
Stones in the drainage channel on right hand side of path leading to 7th Tee.

• **Courtesy Holes:-** Holes 4 & 11 are courtesy holes, when on the Fairway, stand in a safe place & invite following groups on the Tee to Tee off.

• **Note: ALL** Players are responsible for checking the **Full Version of the Local Rules** on the Noticeboards before play commences.

Course Etiquette

• Avoid Slow Play at **ALL** times.

• **ALWAYS** let quicker playing groups through at the earliest opportunity.

• Greenkeepers have **Priority** on the course **AT ALL TIMES**, please be patient.

• Replace **ALL** Divots & repair **ALL** Pitchmarks PLEASE.

• Please **DO NOT** use your putter head to retrieve balls from the hole cup.

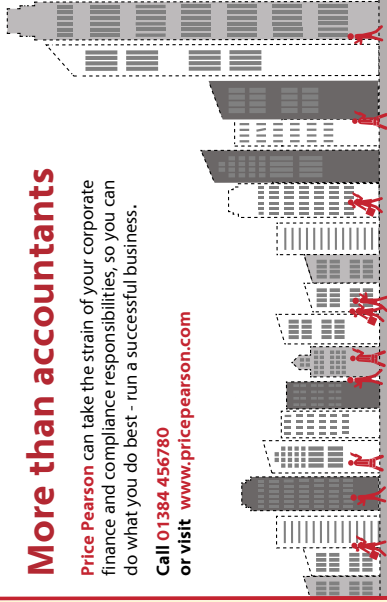
• Please use the Bells on the 2nd, 11th, 14th & 18th Holes to indicate it's safe for following groups to play.

DAILY PIN POSITIONS	<div></div> Front	<div></div> Middle	<div></div> Back
---------------------	-------------------	--------------------	------------------

More than accountants

Price Pearson can take the strain of your corporate finance and compliance responsibilities, so you can do what you do best - run a successful business.

Call **01384 456780**
or visit **www.pricepearson.com**



WE PUT THE IT IN DIGITAL

Experience the speed and security of cloud computing

We can help you start your cloud journey today:

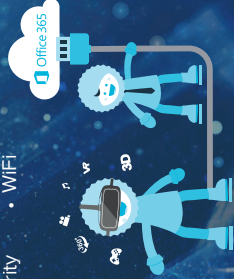
- Office 365
- Email Security
- CCTV
- IT Infrastructure

To find out more call us

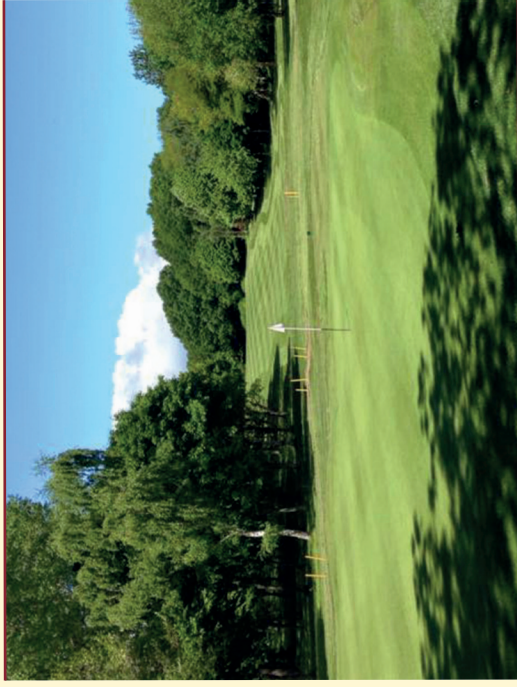
on **01384 563 050**,
or email **hello@iceblue.co.uk**

www.iceblue.co.uk

iceBlue
DIGITAL



Little Lakes Golf Club



Lye Head, Bewdley
DY12 2UZ
www.littlelakes.co.uk
01299 266385

Great Golf in the Heart of England



www.fsIsupport.co.uk

Server & Desktop Support • Office 365
Web Monitoring • Antispam • Antivirus

01384 686297

enquiries@fsIsupport.co.uk

mfg
solicitors
the law firm for life

**TEE'D UP
FOR THE BEST
COMMERCIAL ADVICE**

0845 55 55 321

mfgsolicitors.com

[@mfgsolicitors](https://twitter.com/mfgsolicitors)

