



— Founded 1780 —

## ROYAL ABERDEEN GOLF CLUB

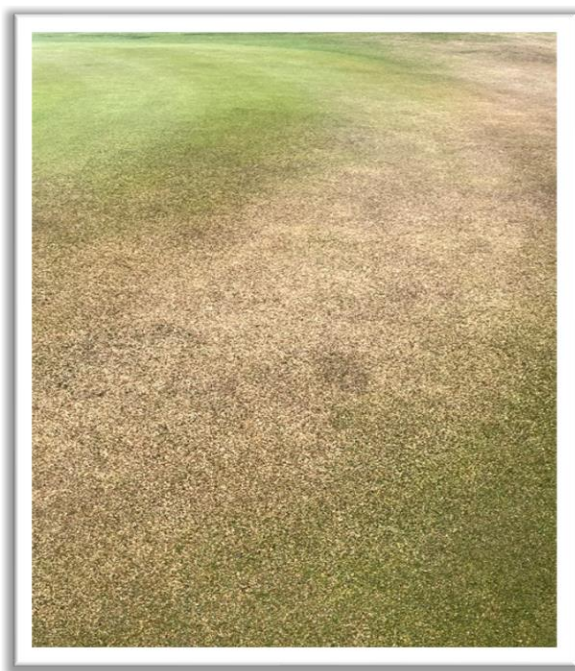
### BALGOWNIE AND SILVERBURN COURSE UPDATE JUNE 2023

It has been very dry over the past 30 days with only 14mm of rain recorded. Both courses have dried out considerably and are now looking and playing as they should. It is fairly early for us to be this dry and with over 4 months of the season still to play we have worked hard to maintain moisture levels on the main play areas around 15%. The greens that have been re-built dry up very quickly and require more attention with regards to irrigation cycles. The use of good quality wetting agents throughout has enabled us to maintain these levels fairly well but there is still a requirement to hand water dry spots on the greens, tees and approaches.

#### **GREENS AND APPROACHES** (both courses)

We have relaxed mowing slightly due to the reduced growth levels and hot dry conditions. Wetting agent packages have been applied to maintain adequate moisture levels without compromising the playability of the links. Liquid seaweed and soil conditioners have also been applied to reduce the stress on the plant during the high temperatures.

Mowing heights remain at 4mm on greens and 6mm on approaches. Rolling has also been carried out to maintain pace and smoothness.



The moisture meter is a valuable tool when the weather is like this as it gives accurate readings on which to act with irrigation and hand watering. This reading at 8.1% is from the edge of a green and is too low with the turf showing signs of wilting especially turf with annual meadow grass present.

### **FAIRWAYS (both courses)**

Mowing has been reduced to weekly at 9mm again due to reduced growth and heat stress on the mounds. It has not compromised the turf in any way but has given it some added protection during periods of high temperatures. Wetting agents and some soluble N have been applied to maintain adequate moisture levels and promote some growth.

### **TEES (both courses)**

Granular fertiliser (23.2.10) was applied to maintain good growth levels and recovery. This is a polymer coated product that will release slowly over a 10–12-week period and is safe to use during periods of dry weather. Mowing has continued at 6mm twice weekly.

### **BUNKERS (both courses)**

Daily raking takes place with sand splash cleared up each morning. Mowing on the mounds and edges has been done as required as they are now very dry and burnt.

### **ROUGH AREAS (both courses)**

The semi rough areas are being cut weekly as they catch some of the fairway irrigation and are growing well. The secondary rough areas are burning up as they don't receive any irrigation so they have only been mown as required. There is no impact to play as they are very thin and wispy overall but the added grass cover does give some protection from the direct sunlight.

All rough areas on Silverburn from holes 8-16 were treated with a growth regulator to slow down the volume of growth each week. It has certainly helped with very little new growth in the past 2 weeks. This has allowed the green staff to spend more time on other areas hand watering dry spots on greens and approaches.

**Robert Patterson**  
**Course Manager**