

WHS UPDATE

DELEGATES MEETING
15th September 2021



1

Topics

- Pros and Cons
- Handicap on Scorecard
- Entry limits on Competitions
- Acceptable Scores for Handicaps
- The effect of Caps
- Resources
- Q&A

2

WHS PROS & CONS

- Easier to return a score
- It is a fairer system for handicaps
- Handicap updates more frequently
- Personal handicap information available via app
- Players find it the different handicaps confusing (HI, CH, PH)
- Handicap allowances seem unfair
- Stroke allowance calculations are too complex
- The last score returned doesn't necessarily reflect in new HI

3

Handicap on Scorecard

Course Handicap **MUST** be on the score card

Rules of Golf

Rule 3.3b(4) **Scoring in Handicap Competition.** The player is responsible for making sure that his or her handicap is shown on the scorecard. If the player returns a scorecard without the right handicap: Handicap on Scorecard 'Too High or No Handicap Shown'. If this affects the number of strokes the player gets, the player is **disqualified** from the handicap competition. If it does not, there is no penalty.

Handicap Index	Course Handicap	95% Playing Handicap
20.2	24	23
4.9	6	6

4

Defining Handicap Limits in Competitions

- Clubs have 3 options
 1. No handicap entry limits
 - Allow all players to play
 - Divisions are recommended
 2. Set handicap entry limits
 - Any limits must be clearly stated in Terms of Competition upon entry
 - Strongly recommended any limit set using Handicap Index
 3. Specified limits
 - Allow all players to enter
 - Eligibility for main prize or trophy may be limited to maximum (or minimum) handicap index allowance.

5

Example Terms of Competition

fully developed

'This event is open to all players with a handicap index up to a maximum of **54.0**. However, eligibility for the Trophy will be limited to a maximum handicap index allowance of **36.0**. Other prizes will be awarded in divisions as follows: Division 1 up to **15.4** handicap index; Division 2 from **15.5 to 25.4** handicap index; Division 3 from **25.5 to 32.4** handicap index; Division 4 from **32.5 to 54** handicap index.'

6



Terms of Competition: Summary

- Clubs and/or sections may:
 - May set handicap limits on entry to competitions
 - May create divisions for prize allocation
 - May set limits on who can win trophy and major competitions
 - Can require players to have returned a specified number of acceptable scores each year to be eligible to win competition

7



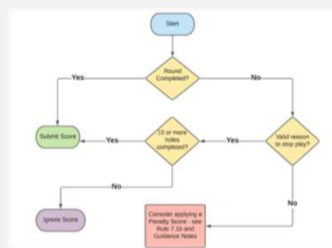
Acceptable scores for handicap

- Must comply with Rule 2 of WHS Rules of Handicapping
 - Registering Intent:
 - Scores must be pre-registered on the day of play prior to the round as directed by the Handicap Committee
 - Register via EG app or via the relevant process defined at the club where the round will be played
 - Be in the company of at least one other player
 - Play to the Rules of Golf
 - Play from a set of tees with a current Course Rating and Slope Rating
 - Authorised format of play
 - Individual formats only
 - Over a minimum number of holes

8



WHS Flowchart for 18 hole scores



Valid reasons for a round not being completed included but are not limited to:
Fading light
Bad weather
Emergency
Dangerous weather conditions
Injury or illness
Hole being declared out of play

Invalid reasons for a round not being completed include, but are not limited to:
Poor performance
Slow play

9



Soft cap effect: Case Study

							Current Handicap Index: 16.2		Low Handicap Index 12.9 as of 31 st August 2020	
	SLOPE	ADJ	GRO	CR	SD	PCC	HDCP	INDEX		
1	127	94	73.3	18.4	0	16.1				
2	127	97	73.3	21.1	0	16.1				
3	129	99	72.6	22.2	1	15.7				
4	127	90	73.3	14.9	0	15.1			Best 8/20	
5	136	102	73	24.1	0	14.6				18.4
6	127	100	73.3	23.8	0	14.6				14.9
7	131	104	73.3	24.8	2	14.3				18.4
8	127	97	73.3	21.1	0	13.8				18.4
9	127	100	73.3	23.8	0	13.2				17.5
10	127	98	73.3	19.3	3	13.2				13.1
11	127	97	73.3	18.4	3	13				14
12	127	97	73.3	18.4	3	12.9				17.5
13	127	97	73.3	21.1	0	12.9				17.5
14	127	93	73.3	17.5	0	12.9				17.5
15	127	88	73.3	13.1	—	12.7				132.2
16	127	94	73.3	18.4	—	12.7				16.525
17	127	95	73.3	20.2	-1	12.7				
18	127	89	73.3	14.0	—	12.5				
19	127	94	73.3	17.5	—	12.5				
20	127	101	73.3	24.6	—	12.5				

17.5-12.9=4.6
Allowed 3
50% of 1.6 = 0.8

Soft Cap mechanism suppresses player's increase in HI

10



Resources

- Mixed Tee calculator
 - CONGU website
- Guidance on the WHS rules of Handicapping as Applied within GB&I
 - CONGU website
- Rules of Handicapping
 - England Golf website
- WHS Portal User Guide
 - England Golf website

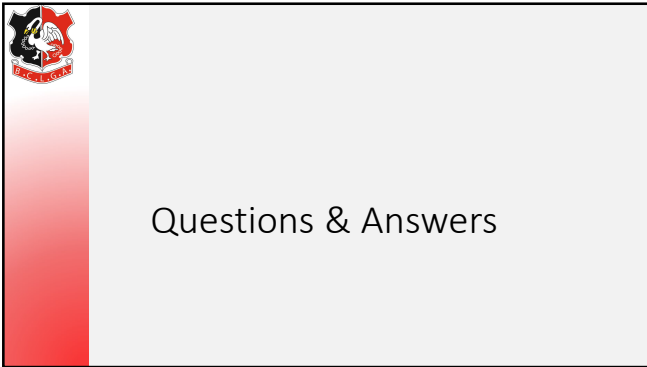
11



Latest updates

- Latest publications available from the England Golf website
- September 2021
 - Exceptional Score Reductions
 - Acceptable Score Submissions
 - Guidance Notes Hole Not Played etc
 - Winter Golf Checklist
- All sent to clubs early September

12



13