

Appendix 11

Photography Consent

This form is to be signed by the legal carer of a child under the age of 18, together with the child. Please note that if you have more than one child registered you will need to complete separate forms for each.

GOSFIELD LAKE GOLF CLUB recognises the need to ensure the welfare and safety of all children in golf. As part of our commitment to ensure their safety we will not permit photographs, video images or other images of your child to be taken (except where some incidental inclusion may not be possible to avoid) or used without your consent.

GOSFIELD LAKE GOLF CLUB will ensure that any image of a child where consent has not been obtained will not be published.

GOSFIELD LAKE GOLF CLUB will follow the guidance for the use of images of children as detailed within the Club's Safeguarding Children and Young People Policy.

GOSFIELD LAKE GOLF CLUB will take steps to ensure these images are used solely for the purposes for which they are intended i.e. the promotion and celebration of the activities of the club.

If you become aware that these images are being used inappropriately you should inform the Club Welfare Officer immediately.

The photographs may be available on the website http://_____ for the golf season 20xx. If at any time either the parent/ carer or the child wishes the data to be removed from the website, 7 days' notice must be given to the Club Welfare Officer after which the data will be removed.

To be completed by parent/carers

I _____ (Parent full name) consent to
_____ (name of organisation) photographing or videoing
_____ (name of child) under the stated rules and conditions,
and I confirm I have legal parental responsibility for this child and am entitled to give this consent.

Signature _____ Date _____

To be completed by child

I _____ (Child full name) consent to _____
(name of organisation) photographing or videoing child under the stated rules
and conditions.

Signature _____ Date _____

Appendix 12

Guidance for parents

The GOSFIELD LAKE GOLF CLUB is delighted to welcome you and your child to what we hope is the first of many events that you will be taking part in.

The positive effect of your support, as a parent, can't be overstated. Your behaviour has a real influence on the way your child experiences golf.

First things first – why is your child showing an interest in the sport? Is it to learn a new game? To hang out with their friends? Because they did it in school and liked it? Or because you play?

Make sure they're playing for their own reasons, not yours.

To enable us to provide the best possible experience for you and your child, we kindly request that you read through the following guidance and complete the attached forms.

- Take an interest in your child's activity and progress and be supportive.
- Familiarise yourself with the GOSFIELD LAKE GOLF CLUB Safeguarding Policy (attached).
- Familiarise yourself with
 - A. Codes of Conduct for parents, coaches, children and young people.
 - B. Transport Policy.
 - C. Changing Room Policy.
 - D. Photography, Videoing and the use of Social Media Policies.
- Complete the attached Parental Consent Form which will enable event organisers to cater for any particular needs that your child may have (e.g. medical conditions and medications, allergies, learning difficulties etc.), as well as contact you in the unlikely event of an emergency.
- Go through the attached Code of Conduct **with** your child and return a signed copy to the club/event organiser.
- Be punctual when dropping off and picking up your child from coaching/ events. It is important to communicate with the club if collecting your child after an event/coaching session may cause a problem.

- Introduce yourself to the adults involved in the supervision of your child.
- When leaving your child, make sure they have the necessary provisions for the day, including the ability to meet the requirements of changing weather conditions. Please ensure that your mobile is switched on when you are away from the club, so that you can be contacted in an emergency.
- Encourage your child to take part and support club activities such as coaching & competitions.
- Help your child to arrange golf with other juniors away from club organised activities so they have someone to play golf with.

As a parent/carer you are encouraged to:

- Discuss any concerns regarding the organisation of activities or the behaviour of adults towards your child with the Club Welfare Officer, who will treat any concerns you or your child may have in the strictest confidence
- England Golf Lead Safeguarding Officer is also available for advice: 01526 351824

Club Welfare Officer : Sue Bernadine

Appendix 13

Managing Young People on Away Trips – GOSFIELD LAKE GOLF CLUB

The following provides good practice guidance for taking teams on an away fixture for a day (not overnight)

- appoint a team manager with clear roles and responsibilities
- appoint a designated safeguarding lead contact (not the team manager) who is appropriately trained and competent for the role and responsibilities
- establish well in advance where the fixture is
- ensure you have sufficient staff to manage and look after the young people
- obtain written permission from the parents/carers or carers for participation, transporting and supervising. An up to date photograph of each child must be attached to the child's consent form (for use in the event of any child going missing)
- ensure that a welfare plan has been written and communicated to staff, participants and carers
- ensure all staff responsible for the young people have been DBS checked to the appropriate level and staff have had appropriate safeguarding training
- ensure that a risk assessment has been conducted
- ensure that there is a contact available e.g a staff member who is not travelling away, who will act as the key contact point if required.

Accommodation

Whatever the accommodation, the team manager should ensure that the children are safe. Discuss your code of conduct and discipline policy with the staff at the accommodation. All children must know which rooms staff are in and how to contact them if required.

If rooms are equipped with satellite TV, inappropriate programmes may be available. It may be possible to have these programmes disconnected.

If rooms have fridges, all alcohol must be removed.

Check the accommodation policy for extras on bills, breakages and lost keys. All accommodation must be clean and with access to sufficient toilet and bathing facilities.

It is not acceptable:

- For children to share a bed
- For male and female children to share a room
- For staff to share a room with children

Checks must be made to ensure that the needs of children with disabilities are met. For wheelchair users, it is important to check access to the building, room and bathroom facilities

Overnight Stays

Those responsible for organising overnight stays should establish the purpose of the trip, confirm the dates, location, and duration. You should also conduct a risk assessment, identify suitable venues and facilities for both fixtures and accommodation and consider the following:

- Purpose of the trip.
- Who will be going, children? Staff?
- How much will it cost? How much spending money is required?
- What insurance cover is required?
- Supervision of children, both playing and non-playing time.
- Catering for all food requirements.
- Communication with parents (see above)
- Ensure a list of the team and staff is left, with contact number and address of the accommodation
- Ensure that there are emergency contact numbers for all the team and staff.
- An itinerary giving as much detail as possible.
- Emergency procedures and telephone contacts.

- Codes of contact for both staff and children.
- Welfare and child protection procedures.

Appendix 14

Social Media Guidance - GOSFIELD LAKE GOLF CLUB

This guidance gives procedures that will support and underpin the use of social networking and other online services within **GOSFIELD LAKE GOLF CLUB**. It is important that all members, staff, volunteers, coaches, officials/referees, board members, or anyone working on behalf of **GOSFIELD LAKE GOLF CLUB** are aware of this policy and agree to the following terms.

Advice for Individual

- Do not accept children as contacts on social networking sites if you hold a position of trust with children/young people.
- Where contact through social networking sites is used for professional reasons, restrict the communication to professional content and obtain written consent from parents prior to establishing contact.
- Include a third party in any communications to children, e.g. copy parents into communications.
- Use the privacy settings on the various sites to ensure that your content will only be viewed by appropriate people.
- Ensure that any content you place on a social networking site is age-appropriate. Do not use the site to criticise or abuse others.
- Know where to direct junior members and their parents for information.
- Know how to report concerns.
- Know how to keep data safe and secure. This should include the personal contact data of individuals, such as mobile numbers, email addresses and social networking profiles.

Advice for Children

- Consider carefully who you invite to be your friend online and make sure they are who you actually think they are.

- There are websites that offer advice about protecting yourself online, such as www.ceop.gov.uk and www.childnet.com
- Make sure you use privacy settings so that only friends can view your profile.
- Remember that anything you post on websites may be shared with people you don't know.
- Never post comments, photos, videos, etc., that may upset someone, that are untrue or that are hurtful. Think about whether you may regret posting the content at a later date.
- If you are worried or upset about something that's been posted about you, or by texts you receive from other juniors or adults involved with the club, raise this with your Club Welfare Officer. Alternatively contact your National Governing Body Lead Safeguarding Officer (England Golf 01526 351824). Do not suffer alone. You will be listened to and your concerns will be taken seriously.
- If you want to talk to someone anonymously, call Childline on 0800 1111, or contact them on the web at www.childline.org.uk. You can also call the NSPCC on 0808 800 5000.

Advice for Parents

- Make yourself knowledgeable about social networking platforms and how they work.
- Go on the internet with your child and agree what sites are acceptable to visit. Regularly check that they are staying within the agreed limits.
- Encourage your child to talk to you about what they have been doing on the internet.
- Make sure they feel able to speak to you if they ever feel uncomfortable, upset or threatened by anything they see online.
- Encourage children to look out for each other when they're online. Explain that it's all part of staying safe and having fun together.
- Explain to children that it's not safe to reveal personal information, such as their name, address or phone number on the internet. Encourage them to use a cool nickname rather than their own name.

- Attachments and links in emails can contain viruses and may expose children and young people to inappropriate material. Teach children to only open attachments or click on links from people they know.

Further Advice for Parents of Young Golfers

- If you are concerned about any texts, social networking posts or any other use of communication technology by members of the golf club, volunteers or members of staff, raise this with the Club Welfare Officer. They will look into the matter and take appropriate action. Alternatively contact England Golf Lead Safeguarding Officer Tel 01526 351824.
- In addition to reporting concerns to England Golf (National Governing Body), you should immediately report possible online abuse to the Child Exploitation and Online Protection Centre (CEOP) or the police. Law enforcement agencies and the internet service provider may need to take urgent steps to locate a child and/or remove the content from the internet. Where a young person may be in immediate danger, dial 999.
- Do not post/send negative or critical comments or messages about other children in the club, staff or volunteers. If you have concerns about a person, these should be raised using appropriate channels within the club and not using social media.
- If you wish to speak to an external organisation for advice, you can contact the NSPCC helpline on 0808 800 5000.

Appendix 15

Whistleblowing Policy - GOSFIELD LAKE GOLF CLUB

Safeguarding children, young people and adults at risk requires everyone to be committed to the highest possible standards of openness, integrity and accountability.

As a club, we are committed to encouraging and maintaining a culture where people feel able to raise a genuine safeguarding concern and are confident that it will be taken seriously.

You may be the first to recognise that something is wrong but feel that you cannot express your concerns as this may be disloyal to your colleagues or you may that you will be the victim of harassment or victimisation as a result.

Children, Young People and Adults at risk need someone like you to safeguard their welfare.

What is whistle blowing?

In the context of safeguarding, "whistle blowing" is when someone raises a concern about the well-being of a child or an adult at risk.

A whistle blower may be:

- a player;
- a volunteer;
- a coach;
- other member of staff;
- an official;
- a parent;
- a member of the public.

Reasons for whistle blowing:

Those involved in sport must acknowledge their individual responsibilities and bring matters of concern to the attention of the relevant people and/or agencies. Although this can be difficult it is particularly important where the welfare of children may be at risk.

Each individual has a responsibility for raising concerns about unacceptable practice or behaviour:

- To protect or reduce risk to others
- To prevent a problem from becoming worse or more widespread
- To prevent becoming implicated yourself

What prevents those individuals from whistle blowing:

- Starting a chain of events that they have no control of
- Disrupting work or training
- Fear of getting it wrong or making a mistake
- Fear of repercussions
- Fear of damaging careers
- Fear of not being believed.

If a child or an adult at risk is in immediate danger or risk of harm, the police should be contacted by calling 999.

Where a child or an adult at risk is not in immediate danger the first person you should report your suspicion or allegation to is your Club Welfare Officer. If for any reason you cannot, or do not wish to report the matter to your Club Welfare Officer please contact the England Golf Lead Safeguarding Officer on 01526 351824 or email safeguarding@englandgolf.org

Alternatively you can contact the Local Authority Designated Officer (LADO) or the NSPCC on 0800 800 5000.

Information to include when raising a concern

The whistle blower should provide as much information as possible regarding the incident or circumstance which has given rise to the concern, including:

- their name and contact details (unless they wish to remain anonymous);
- names of individuals involved;
- date, time and location of incident/circumstance; and
- whether any witnesses were present.

GOSFIELD LAKE GOLF CLUB assures that all involved will be treated fairly and that all concerns will be properly considered. In cases where suspicions prove to be unfounded, no action will be taken against those who report their concerns, provided they acted in good faith and without malicious intent.

What happens next?

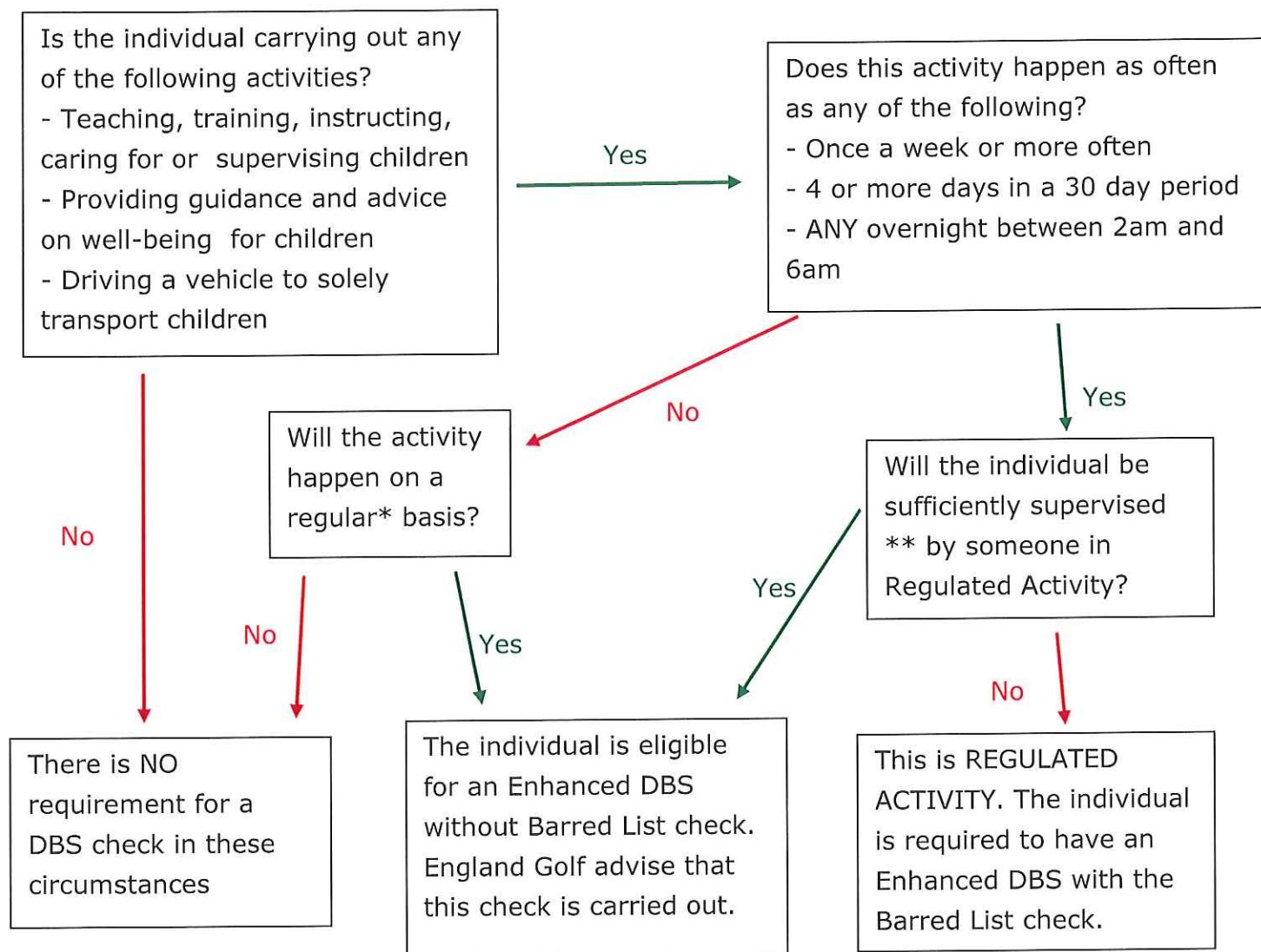
- You should be given information on the nature and progress of any enquiries – this may vary depending on the nature and result of the investigations.
- All concerns will be treated in confidence. During the process of investigating the matter, every effort will be made to keep the identity of those raising the concern to the minimum number of individuals practicable.
- Your Club has a responsibility to protect you from harassment or victimisation
- No action will be taken against you if the concern proves to be unfounded and was raised in good faith
- Malicious allegations may be considered a disciplinary offence

The Public Interest Disclosure Act 1998 protects whistle blowers from victimisation, discipline or dismissal where they raise genuine concerns of misconduct or malpractice.

If the whistle blower does not believe that the concern has been dealt with appropriately and wishes to speak to someone outside the club or the England Golf Governance Department the NSPCC Whistleblowing advice line should be contacted on 0800 028 0285 or by emailing help@nspcc.org.uk.

Appendix 16

England Golf DBS Flowchart



* Regular is open to definition - it is suggested that annually would be insufficient but an argument for eligibility could be made if the individual does an activity once a month or a number of times over the summer period, for example.

**Supervision must be 'reasonable in all the circumstances to ensure the protection of children'. It must be 'regular and day to day' (supervision must not be concentrated in first few weeks and then tail off). Supervision must be undertaken by someone who is in Regulated Activity themselves.

Appendix 17

Categories of child abuse

Abuse can happen on any occasion or in any place where children and young people are present.

Child abuse is any form of physical, emotional or sexual mistreatment or lack of care that leads to injury or harm. Children may be abused in a family or in an institutional or community setting by those known to them or, more rarely, by a stranger. Children can be abused by adults, either male or female, or by other children.

Safeguarding is defined as:

- Protecting children from maltreatment;
- Preventing impairment of children's health or development;
- Ensuring that children are growing up in circumstances consistent with the provision of safe and effective care; and
- Taking action to enable all children to have the best life chances.

Child Protection is the activity that is undertaken to protect specific children who are suffering or are likely to suffer significant harm.

There are 4 main types of abuse: neglect, physical abuse, sexual abuse and emotional abuse. Children and young people can also be harmed through poor practice and bullying within a sport setting.

Neglect is when adults consistently or repeatedly fail to meet a child's basic physical and/or psychological needs which could result in the serious impairment of the child's health or development e.g. failure to provide adequate food, shelter and clothing; failing to protect a child from physical harm or danger; or the failure to ensure access to appropriate medical care or treatment. It may also include refusal to give love, affection and attention.

Examples in sport could include a coach or supervisor repeatedly failing to ensure children are safe, exposing them to undue cold, heat or extreme weather conditions without ensuring adequate clothing or hydration; exposing them to unnecessary risk of injury e.g. by ignoring safe practice guidelines, failing to ensure the use of safety equipment, or by requiring young people to participate when injured or unwell.

Physical abuse is when someone physically hurts or injures children by hitting, shaking, throwing, poisoning, burning, biting, scalding, suffocating, drowning or otherwise causing harm. Physical harm may also be caused when a parent or carer feigns the symptoms of, or deliberately causes, ill health to a child whom they are looking after.

Examples in sport may be when the nature and intensity of training or competition exceeds the capacity of the child's immature and growing body; where coaches encourage the use of drugs or harmful substances to enhance performance or delay puberty; if athletes are required to participate when injured; or when sanctions used by coaches imposed involve inflicting pain.

Sexual abuse is where children and young people are abused by adults (both male and female) or other children who use them to meet their own sexual needs. This could include full sexual intercourse, masturbation, oral sex, anal intercourse, kissing and sexual fondling. Showing children pornographic material (books, videos, pictures) or taking pornographic images of them are also forms of sexual abuse.

Sexual abusers groom children, protective adults and clubs/organisations in order to create opportunities to abuse and reduce the likelihood of being reported.

Examples in sport may include coaching techniques involving physical contact with children creating situations where sexual abuse can be disguised and may therefore go unnoticed. The power and authority of, or dependence on, the coach if misused, may also lead to abusive situations developing. Contacts made within sport and pursued e.g. through texts, Facebook or Twitter have been used to groom children for abuse.

Child Sexual Exploitation is a form of child sexual abuse. It occurs where an individual or group takes advantage of an imbalance of power to coerce, manipulate or deceive a child or young person under the age of 18 into sexual activity

(a) in exchange for something the victim needs or wants, and/or

(b) for the financial advantage or increased status of the perpetrator or facilitator.

The victim may have been sexually exploited even if the sexual activity appears consensual. Child sexual exploitation does not always involve physical contact; it can also occur through the use of technology.

Emotional abuse is the persistent emotional ill-treatment of a child so as to cause severe and persistent adverse effects on the child's emotional development. It may involve conveying to children that they are worthless or unloved, inadequate, or valued only insofar as they meet the needs of another person.

It may feature age or developmentally inappropriate expectations being imposed on children or even the over protection of a child. It may involve causing children to feel frightened or in danger by being constantly shouted at, threatened or taunted which may make the child very nervous and withdrawn. Some level of emotional abuse is involved in all types of ill-treatment of a child.

Examples in sport may include children who are subjected to constant criticism, name-calling, sarcasm, bullying, racism or pressure to perform to unrealistically high expectations; or when their value or worth is dependent on sporting success or achievement.

Appendix 18

Please add a picture of your CWO, so they are easily identifiable, as well as their name, contact information and a short summary about them. You can download this editable poster from our website <http://www.gosfield-lake-golf-club.co.uk/>

 **ENGLAND GOLF**

 **SafeGolf**

Committed to delivering a safe environment for golf

Club WELFARE officer

Is something worrying you?
Do you need someone to talk to?

Speak to your club welfare officer



WELFARE OFFICER Sue Bernardine

WELFARE OFFICER MOBILE 07793 452142

Email, Sue.bernardine@hotmail.co.uk

ABOUT ME

I have been a member of Gosfield Lake GC for over 15 years. During this time I have been Lady Captain twice and sat on many committees. I was also involved in the junior section of the club for a number of years during my time as a member

Alternatively, you can speak to someone at

ChildLine 0800 1111
NSPCC 0800 800 5000
England Golf 01526 351851

www.safegolf.org

Appendix 19

Insert Club Logo & Name

The purpose of this document is to make all Club members aware of their safeguarding responsibility, identify particular areas of the Safeguarding Policy that they should be aware of and give some guidance on reporting procedures if a concern is identified. A club may choose to display this on a notice board or give a copy to all new/existing members.

Safeguarding Children and Young People – A Short Guide for Club Members

GOSFIELD LAKE GOLF CLUB is committed to ensure that the sport of golf is one within which children and young people involved can thrive and flourish in a safe environment and that all children, young people and adults at risk have a fun, safe and positive experience when playing golf.

GOSFIELD LAKE GOLF CLUB is an affiliated member of England Golf and follows the England Golf Safeguarding Children and Young People Policy and procedures.

You might be thinking **“What has safeguarding got to do with me?”**

Government guidance makes it clear that ‘Safeguarding is everyone’s responsibility’.

Anyone who has a negative experience of sport at a young age is less likely to become a regular long-term participant. It’s important for the future of your club and the sport as a whole that children and young people have an enjoyable experience.

All club members have a part to play in making that happen.

All adults should contribute to the club meeting its overall duty of care, be aware of our club’s safeguarding policy, and know what to do if they are concerned about a young person.

GOSFIELD LAKE GOLF CLUB asks our members to

- **Familiarise yourself with the GOSFIELD LAKE GOLF CLUB Safeguarding Policy.**

The full copy of the GOSFIELD LAKE GOLF CLUB Safeguarding Children and Young People Policy is available on our website <http://www.gosfield-lake-golf-club.co.uk/>

- In particular familiarise yourself with: *(Golf Clubs can add relevant information from their Safeguarding Policy in each section)*

1. GOSFIELD LAKE GOLF CLUB Codes of Conduct

Adults should always be aware that age related differences exist and conduct themselves in a manner that both recognises this and prioritises the welfare of children and young people.

2. Anti-Bullying Policy

GOSFIELD LAKE GOLF CLUB believe that every effort must be made to eradicate bullying in all its forms. The Club will not tolerate bullying in any of its forms during club matches, competitions, coaching or at any other time while at the club.

3. Transport Policy

The club believes it is primarily the responsibility of parents/carers to transport their child/children to and from events.

4. Changing Room Policy

The changing rooms are used by all members & visitors. Wherever possible adults will avoid changing or showering at the same time as children but parents will be made aware that with limited changing room space there will be occasions when adults and children may need to share the facilities. Where a parent/carer does not consent to their child accessing the changing rooms, it is their responsibility to either supervise the child while in the changing rooms or ensure that they do not use them.

5. Photography, Videoing and the use of Social Media Policies

Think very carefully before contacting a young person via mobile phone, e-mail or social media.

Do not accept children as contacts on social networking sites if you hold a position of trust with children/young people.

In general stick to group communications, copy the communication to a parent and only communicate about organisational matters.

What should I do if I'm concerned about a child or young person?

A concern may involve the behaviour of an adult towards a child at the club, or something that has happened to the child outside the club.

Children and young people may confide in adults they trust, in a place where they feel comfortable.

An allegation may range from verbal bullying, to inappropriate contact online, to neglect or emotional abuse, to physical or sexual abuse.

If you are concerned about a child, it is not your responsibility to investigate further, but it is your responsibility to act on your concerns and share them.

Pass the information to Sue Bernadine, Welfare Officer who will follow the club's Safeguarding procedures.

Name: Susan Bernardine

Email Address: sue.bernardine@hotmail.co.uk

Telephone Number: 07793 452142

If you believe the child is at immediate risk of harm, call the Police.

Other useful contacts:

NSPCC 24-hour helpline Tel: 0808 800 5000 | England Golf Lead Safeguarding Officer 01526 351824

Appendix 20

Photography Policy – GOSFIELD LAKE GOLF CLUB

Whilst the GOSFIELD LAKE GOLF CLUB does not seek to prohibit those with a legitimate interest in filming or photographing children participating in sporting activities it recognises that such activity should take place within an appropriate policy framework.

This policy applies at any GOSFIELD LAKE GOLF CLUB event at which children under the age of 18 are participating.

Policy

The GOSFIELD LAKE GOLF CLUB policy is as follows;

The welfare of children taking part in golf is paramount.

Children and their parents/carers and/or the GOSFIELD LAKE GOLF CLUB should have control over the images taken of children at GOSFIELD LAKE GOLF CLUB events.

The golfing activity should not be misused purely for the purpose of obtaining images of children.

Images should not be sexual or exploitative in nature or open to misinterpretation and misuse.

The identity of children in a published image should be protected so as not to make the children vulnerable. (If the name of an individual golfer is published with their photograph to celebrate an achievement other personal contact details should never accompany the picture).

Procedure

Official/professional photographers and those using 'professional' equipment

The GOSFIELD LAKE GOLF CLUB requires that anyone wishing to take photographic or video images, at any GOSFIELD LAKE GOLF CLUB event at which children under the age of 18 are participating, in an official or professional capacity or using 'professional' camera or video equipment registers their details with the GOSFIELD LAKE GOLF CLUB Championship Office. This must be done before carrying out any such activity on the golf course (including the practice ground) or surrounding area or in the clubhouse.

Once registered an identification label will be issued as confirmation of registration. Anyone found using photographic or video equipment without an appropriate identification label will be questioned.

The GOSFIELD LAKE GOLF CLUB reserves the right to refuse to grant permission to take photographic or video images if it sees fit.

Photographers must obtain consent from parents to take and use their child's image.

Parents/carers/family members of competitors

Parents, carers and family members taking occasional informal photographs with mobile devices of their own child, ward or family member at a GOSFIELD LAKE GOLF CLUB event do not need to register their details with the GOSFIELD LAKE GOLF CLUB.

If such photographs include other children (eg at a prize presentation) they should not be publicly displayed or published on social media unless the prior permission of the parents/carers of all the children in the photographs has been obtained.

Concerns

If competitors or parents have any concerns they should raise them by contacting the GOSFIELD LAKE GOLF CLUB Championship Office immediately.

The GOSFIELD LAKE GOLF CLUB will notify the relevant authorities should it have any doubts as to the authenticity of any individual taking photographs.

Appendix 21

Anti-bullying policy – GOSFIELD LAKE GOLF CLUB

The GOSFIELD LAKE GOLF CLUB will:

- recognise its duty of care and responsibility to safeguard all participants from harm
- promote and implement this anti-bullying policy in addition to our safeguarding policy and procedures
- seek to ensure that bullying behaviour is not accepted or condoned
- require all members of the GOSFIELD LAKE GOLF CLUB to be given information about, and sign up to, this policy
- take action to investigate and respond to any alleged incidents of bullying
- encourage and facilitate children and young people to play an active part in developing and adopting a code of conduct to address bullying
- ensure that staff, volunteers and coaches are given access to information, guidance and/or training on bullying.

Each participant, coach, volunteer or official will:

- respect every child's need for, and rights to, a play environment where safety, security, praise, recognition and opportunity for taking responsibility are available
- respect the feelings and views of others
- recognise that everyone is important and that our differences make each of us special and should be valued
- show appreciation of others by acknowledging individual qualities, contributions and progress
- be committed to the early identification of bullying, and prompt and collective action to deal with it
- ensure safety by having rules and practices carefully explained and displayed for all to see

- report incidents of bullying they see – by doing nothing you are condoning bullying.

Bullying

- all forms of bullying will be addressed
- everybody in the GOSFIELD LAKE GOLF CLUB has a responsibility to work together to stop bullying
- bullying can include online as well as offline behaviour
- bullying can include:
 - physical pushing, kicking, hitting, pinching etc.
 - name calling, sarcasm, spreading rumours, persistent teasing and emotional torment through ridicule, humiliation or the continual ignoring of individuals
 - posting of derogatory or abusive comments, videos or images on social network sites
 - racial taunts, graffiti, gestures, sectarianism - sexual comments, suggestions or behaviour
 - unwanted physical contact
- children with a disability, from ethnic minorities, young people who are gay or lesbian, or those with learning difficulties are more vulnerable to this form of abuse and are more likely to be targeted.

Support to the child

- children should know who will listen to and support them
- systems should be established to open the door to children wishing to talk about bullying or any other issue that affects them
- potential barriers to talking (including those associated with a child's disability or impairment) need to be identified and addressed at the outset to enable children to approach adults for help
- children should have access to helpline numbers

- anyone who reports an incident of bullying will be listened to carefully and be supported
- any reported incident of bullying will be investigated objectively and will involve listening carefully to all those involved
- children being bullied will be supported and assistance given to uphold their right to play and live in a safe environment which allows their healthy development
- those who bully will be supported and encouraged to stop bullying
- sanctions for those bullying others that involve long periods of isolation, or which diminish and make individuals look or feel foolish in front of others, will be avoided.

Support to the parents/carers

- parents/carers to be advised on GOSFIELD LAKE GOLF CLUB bullying policy and practice
- any incident of bullying will be discussed with the child's parents/carers
- parents/carers will be consulted on action to be taken (for both victim and bully) and agreements made as to what action should be taken
- information and advice on coping with bullying will be made available
- support should be offered to the parents/carers including information on other agencies or support lines.

Useful contacts

GOSFIELD LAKE GOLF CLUB Welfare Officer,

Name: Susan Bernardine

Email Address: sue.bernardine@hotmail.co.uk

Telephone Number: 07793 452142

NSPCC Helpline 0808 800 5000

ChildLine 0800 1111 / www.childline.org.uk

Kidscape www.kidscape.org.uk

Anti-Bullying Alliance www.antibullyingalliance.org.uk

England Golf Lead Safeguarding Officer 01526 351824