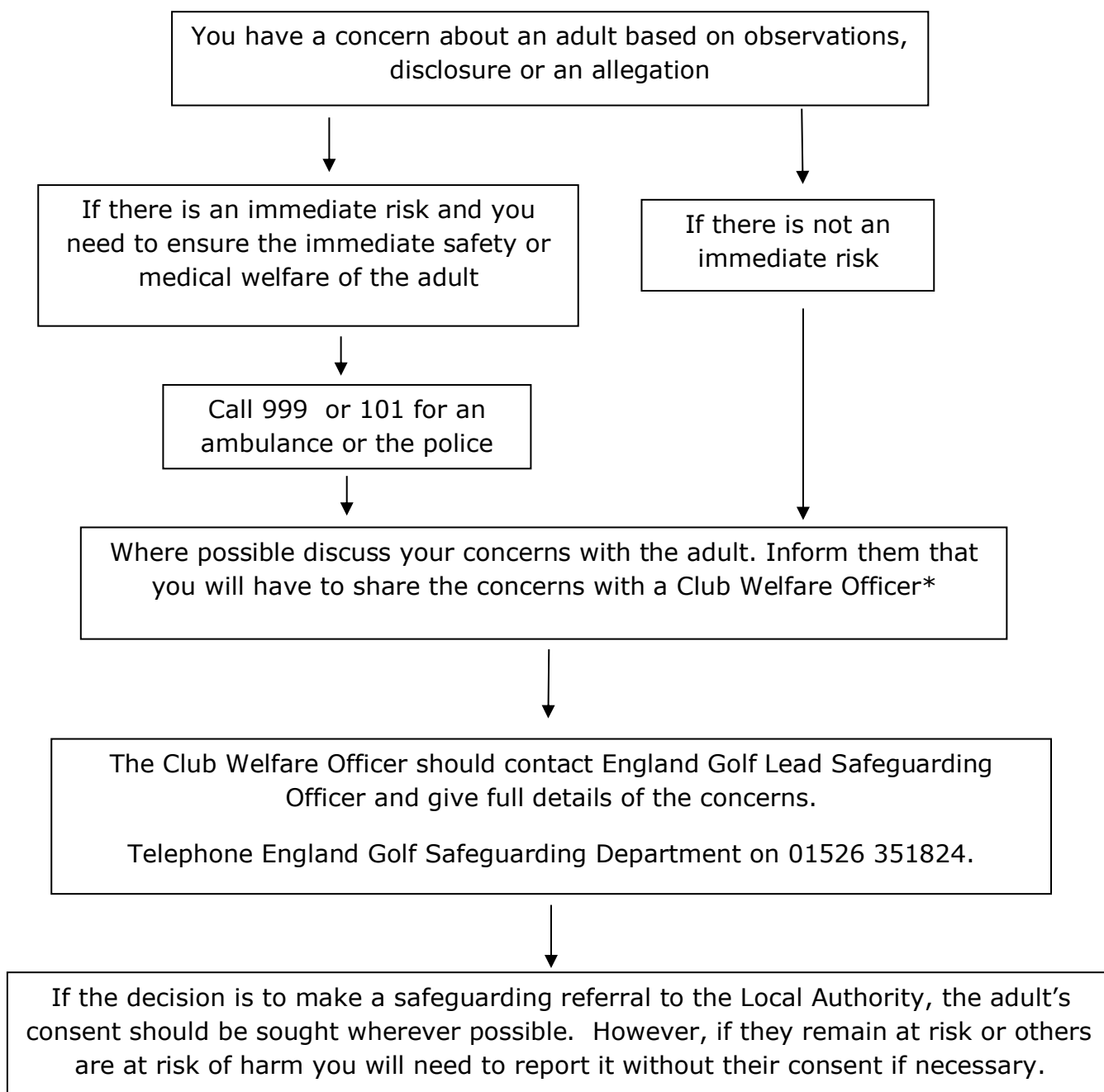


Safeguarding Adults Flowchart

What to do if you have a concern about an adult?



Remember

It is not your duty to investigate concerns about an adult but do not ignore them – talk to the adult if possible and get in touch with someone within your organisation or the local authority for advice.

* If for any reason a Club Welfare Officer is not in post or is unavailable a principle of least delay is important. Please contact the England Golf Lead Safeguarding Officer