



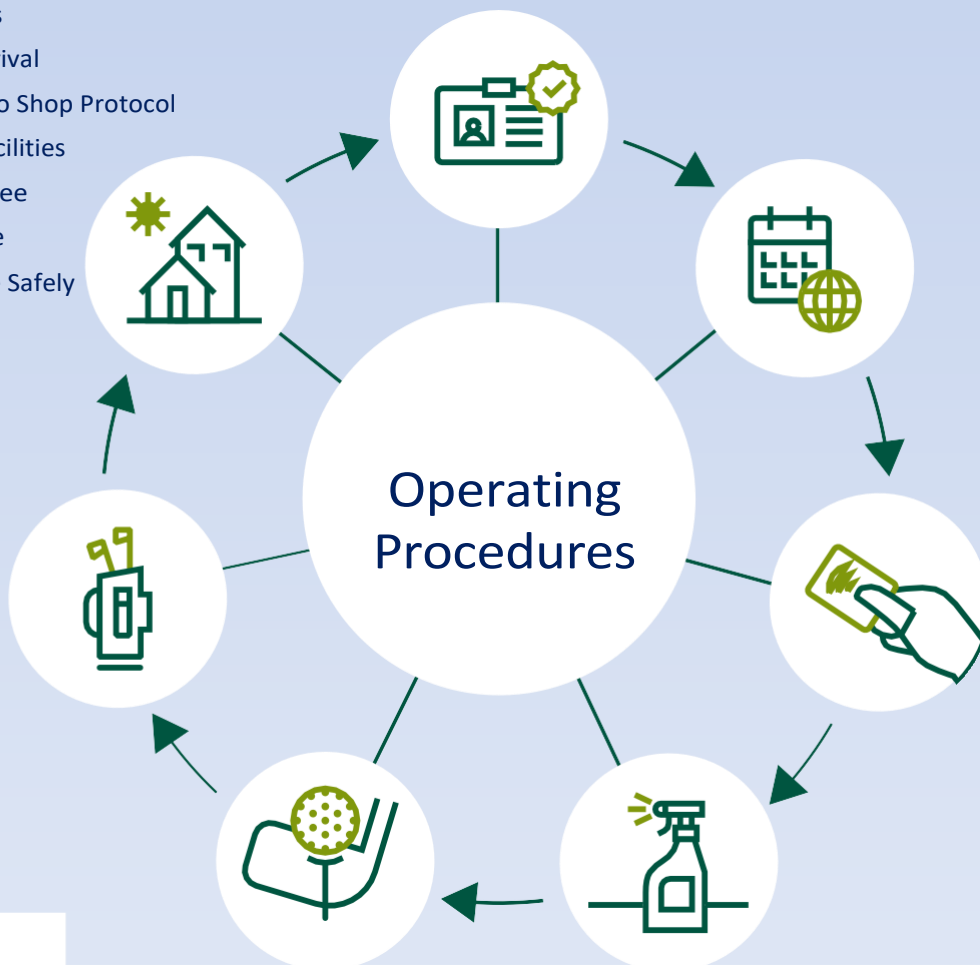
**PLAY SAFE  
STAY SAFE**



# A Practical Guide for Visitors to Golf during COVID-19

Safe every step of the way

- ① Course Access
- ② Booking & Arrival
- ③ Check-in & Pro Shop Protocol
- ④ Clubhouse Facilities
- ⑤ To the First Tee
- ⑥ On the Course
- ⑦ Getting Home Safely



Golf is our passion and we love it. We believe allowing golfers to enjoy a game in a safe environment provides the mental and physical health benefits to improve the wellbeing of hundreds of thousands of enthusiasts across the country.

This practical guide outlines the robust, monitored measures Newton Green Golf Club to help safeguard our staff and customers during the COVID-19 pandemic.

For golfers, the measures cover each step of the journey from home to 1st tee and back home again. At the golf course, these measures are in place from open until close, seven days a week.

Our measures and procedures are under constant review, updated as advice from government, health authorities and governing bodies evolves in line with the gradual lifting of social restrictions.



**PLAY SAFE  
STAY SAFE**



## ① Course Access

Members, Members' guests and visitors are currently welcome to the course.

To access the course, a player must:

- Be an active member, (paid their subscription)
- Not be in self-isolation/quarantine
- Not be displaying COVID-19 symptoms
- Have a pre-reserved tee time with names supplied
- Village members will be able to book a tee time after 12pm (village members play holes 1, 12, village hole and 13 – 18)



## ② Booking & Arrival

- **Booking a tee time in advance is compulsory – via website, app, or phone**
- Buggies are available to hire. Only one person is allowed to sit in the buggy unless from the same household
- We advise golf equipment should be washed before a player leaves home
- Golfers should travel to the club alone, or with a member of the same household
- Ample car parking spaces are available to ensure social distancing. A one way system is set up to get to your starting hole and on leaving the course. **You must abide by this route**
- Arrival at the course no more than 20 minutes prior to your reserved tee time unless using the bar and catering facilities prior to your round.
- **Observe social distancing always and resist the temptation to mingle**
- Changing rooms are available to be used to change footwear. Showers are not in use. You can also arrange golf attire and change footwear at your car.



**PLAY SAFE  
STAY SAFE**



### ③ Check-in and Pro Shop Protocol

- **The Pro Shop is open daily**

**On arrival, please check in with a member of staff for Track & Trace reasons.**

- It is mandatory to wear a face mask if you are looking to go into the pro shop. There will also be a strict one-in one-out policy in place



- If there is already one person already in the pro shop, please wait until a member of staff invites you to come in
- A click and collect service and lessons are also available with our pro
- Card payments are preferred



### ④ Clubhouse Facilities

- The changing rooms are open if you wish to change your shoes in there. Showers will continue to not be in use.
- The toilets are open whilst a member of staff is on site.
- You must wear a mask when using the changing rooms or toilets facility
- The bar & catering facilities is open. This is currently an outside service.
- Table service will be provided as per government guidelines, so please find a table and wait to be served by a member of staff.
- Please stay at the table you have chosen to sit on.
- Mingling is not allowed in this area



**PLAY SAFE  
STAY SAFE**



## ⑤ To the First Tee

- Current information (27<sup>th</sup> April 2021):
- 8-minute intervals between tee times, which you are able to play as a 4-ball at any time
- The practice facilities that are open for practice are:
  - The putting green – this is to be used by the group which are next off the tee or awaiting to tee off **ONLY** – **no more than two groups should be on the putting green**
  - The practice net/s
  - The village hole (chipping and putting only)
  - The driving range (one person at a time on both areas)
  - The Professional has priority on the range if he has a lesson booked
- **Arrive at your starting tee (1<sup>st</sup> or 10<sup>th</sup> tee) no more than 6 minutes prior to the reserved tee time. Do not mingle at the 1<sup>st</sup> tee**
- **Any player(s) not following directions or have not booked a tee time will be asked to leave the course**
- Tee off times strictly observed to ensure minimum 8-minute group spacing



**PLAY SAFE  
STAY SAFE**



## ⑥ On the Course

- Physical distancing must be observed throughout, **particularly on tees and greens**
- Divot bins all removed or covered over
- Ball washers removed or covered over
- Bunker rakes removed on the course. There will be some available from the 1<sup>st</sup> tee to take out with you. Please then return these back at the pro shop window when you finish your round. If there are none available, players are to smooth sand with feet after shot
- Flagsticks to remain in the hole and **must not be touched**
- Ball retrieval mechanisms placed in holes for simple, contact-free ball retrieval
- Please keep up with the group in front. If this is not possible and groups are waiting behind, please let them play through.
- Do not double back to play again if a ball is lost, unplayable, or in a penalty area
- Equipment, food, and drink must not be exchanged between players
- Bins will be available on the 2<sup>nd</sup>, 4<sup>th</sup> and 10<sup>th</sup> holes
- Players must not pick up another player's equipment or golf ball



**PLAY SAFE  
STAY SAFE**



## ⑦ Getting Home Safely

- Post-round, players must return straight to their cars and leave the site
- A staff member will be on-site until at least 5:00pm daily
- Ensure clubs and equipment are cleaned at home thoroughly after use
- **Players must call (01787 377217) or email ([ben@newtongreengolfclub.co.uk](mailto:ben@newtongreengolfclub.co.uk)) the manager at the golf club with any post-round health issues or COVID-19 related queries, at the earliest possible opportunity**

**THANK YOU FOR READING OUR PRACTICAL GUIDE**

**PLEASE ABIDE WITH THIS GUIDE FOR THE SAFETY OF  
YOURSELF, OTHER MEMBERS AND STAFF WHEN  
PLAYING AT NEWTON GREEN GOLF CLUB.**

**THANK YOU AGAIN AND STAY SAFE**



**PLAY SAFE  
STAY SAFE**