

LISBURN

Golf Club

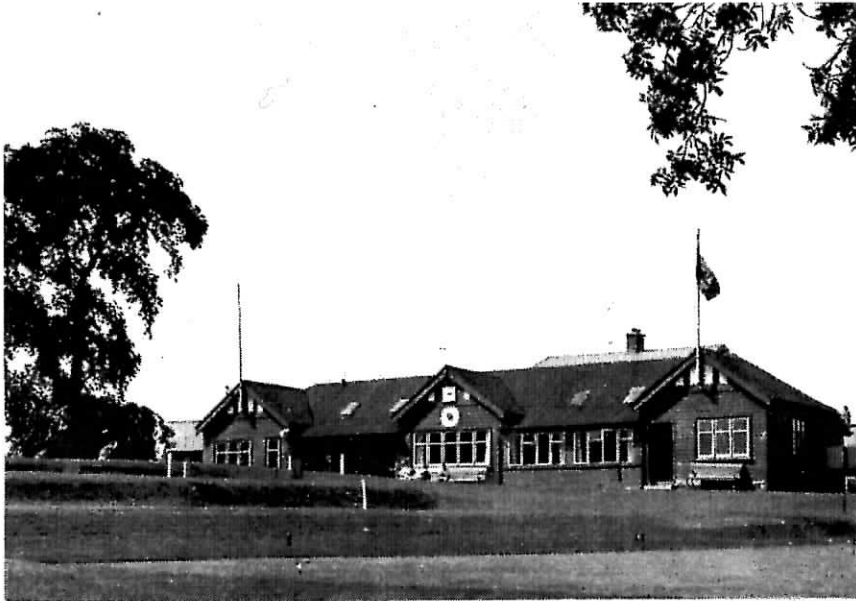
**The contents of this file have
been taken from an original**

Lisburn Golf Club Official Handbook

kindly provided by Mr. John Boyd



Official Handbook



THE CLUB HOUSE

George C. Baxter Studios, Lisburn

Lisburn Golf Club

by J. H. F. McCarrison

In the year 1890 a Golf Club was formed in Lisburn, playing over almost the identical course occupied by the present Club. The time, however, was not then ripe for such an enterprise, but it proved a precursor of greater things. For some five years the Club maintained a precarious and uncertain existence, and finally passed peacefully away in the year 1895-96. This ill-fated Club was one of the first to be affiliated to the Golfing Union of Ireland.

The old Lisburn Club had not lived in vain. It served its purpose and paved the way for its vigorous and robust successor.



THE LOUNGE

George C. Baxter Studios, Lisburn

At a meeting held in the local courthouse on 3rd April, 1905, the decision was taken to form another Club and the picturesque and lovely grounds, known as "The Manor House Lands," some 40 acres in extent, were secured on a lease for 20 years.

The course has several natural advantages. Majestic trees abound, the turf is as fine as is to be found in Ireland, and the sub-soil is sand, giving excellent playing conditions in winter as well as summer. The Club House is ideally situated on an eminence and from it the view is most impressive. Beyond the green sward and trees in the foreground can be seen Slieve Croob in the centre of Co. Down, and still farther to the south the purple forms of the Mountains of Mourne are visible on a clear day.

The original layout of the course has been largely maintained, but some of the holes have been lengthened down the years and several greens have been reconstructed.



DRIVING OFF THE FIRST TEE

George C. Baxter Studios, Lisburn

In the early days the holes had names, and although these have long since fallen into disuse, it may be of interest to recall them. They were :- No.1 - Alpha; No.2 - Shelter; No.3 - Punch Bowl; No.4 - Cottage; No.5 - Sheep Pen; No.6 - Spion Kop; No.7 - Catch-My-Pal; No.8 - Crescent; No.9 - Omega.

During its 58 years the Club has only had three Presidents. The first, Mr. H.A.M. Barbour, M.A., presented the first two trophies for competition - the Barbour Cup and the Hilden Cup - and they still provoke keen rivalry amongst the members. Mr. Barbour held office until his death in 1938, when he was succeeded by his brother, the Rt. Hon. Sir Milne Barbour, Bt., M.A., L.L.D., D.L., M.P. After Sir Milne died in 1951 Dr. Richard McCandless, J. P., was elected President, and since his death in 1962 the office has remained vacant.



GOING TO THE THIRD GREEN

George C. Baxter Studios, Lisburn

Honorary members include His Excellency the Governor of Northern Ireland, the Lord Wakehurst, who resides at nearby Hillsborough, and the General Officer Commanding Northern Ireland Command of the Army, which has its headquarters in the town at Thiepval Barracks.

During the 1939-45 war all ranks of United Kingdom, United States of America and Belgian Forces stationed in Lisburn and district were made honorary members of the Club, and as expressions of appreciation of the hospitality then extended, the Club is the richer by four trophies - B.T.N.I. Cup, Postle Cup, 55th Infantry Cup and Long Kesh Cup.

On two occasions the continued existence of the Club was in some doubt, but the Council was successful in negotiating extensions of the lease, and then in 1957 an important step was taken in the purchase of the course for £7,800.



PUTTING ON THE SIXTH GREEN

George C. Baxter Studios, Lisburn

Since then a steward's residence has been built and the Club House completely renovated at a cost of £4,000, and a further £1,500 has been spent on the purchase of adjoining property, which will enable other amenities to be provided.

The Club has a flourishing Ladies' Branch, established in 1906, and also a goodly number of juvenile members, enabling the future to be contemplated with confidence. So popular has the Club become that there is at present a waiting list for membership, but ladies and juveniles are still being admitted without undue delay.

Teams compete in all the inter-club competitions organised by the Ulster Branch of the Golfing Union of Ireland, but only once has real success been achieved. In 1926 the Ulster Cup was won under the team captaincy of Mr. J. N. Brodie, still happily an active member at the age of 84.

The other members of the winning team were Messrs. H. M. Gibson, J. McKee, R. F. McNeight, H. Quail, S. Wilson, and H. L. Woods. Mr. I. Keery also took part in some of the matches.

The standard scratch score of the course is 71. Fred Daly, Open Champion in 1947, holds the professional record with a score of 66, and Mr. E. N. Williams (scr.), a present member, the amateur record with a score of 68.

CLUB TROPHIES

McKee Cup, Hilden Cup, Craig Cup, Barbour Cup, Postle Cup, Long Kesh Cup, Musgrave Cup, B.T.N.I. Cup, Law Trophy, Sam Wilson Trophy, 55th Infantry Cup, Dr. McCandless Bowl.



THE NINTH GREEN

George C. Baxter Studios, Lisburn

SUBSCRIPTIONS

	£. s. d.
Gentlemen (Entrance Fee £3 3s. 0d.)	7 7 0
Ladies (Entrance Fee £2 2s. 0d.)	3 3 0
Country Members	
Gentlemen	2 12 6
Ladies	1 11 6
Junior and Student Members	
Gentlemen (Entrance Fee £2 2s. 0d.)	3 3 0
Ladies (Entrance Fee £1 1s. 0d.)	1 11 6
Juveniles	1 1 0

ROUND THE COURSE

with W. A. McNeill

1st HOLE 406 yards Bogey 4

An elevated tee looks down a tree-lined fairway. An out-of-bounds perilously close on the left and a single tree on the right make an accurate shot a pre-requisite for playing what is an exceedingly good opening hole.

2nd HOLE 293 yards Bogey 4

The green, framed between two majestic trees about 30 yards apart, makes accurate hitting and precision from the tee essential to obtain the par figure. A panoramic view of the Dromara Hills gives added inspiration to the player.

3rd HOLE 334 yards Bogey 4

The tee is some 30 yards beyond the second green and presents a fairway bordered on the right by a thorn hedge and bunkers, and on the left by a single fairy thorn tree; an elevated plateau green requires accurate judgment for the second shot. Superstition has it that, proximity to the fairy thorn incurs the displeasure of the fairies and subsequently brings bad luck.

4th HOLE 221 yards Bogey 3

A testing bogey 3 hole with an out-of-bounds to the road on the left and a cavernous bunker guarding the right-hand side of the green. A hedge and garden of a small white-washed cottage beyond the green traps the too adventurous spirit.

5th HOLE 135 yards Bogey 3

A delightful pitch-hole. Stern bunkers on all sides make the putting surface a green oasis in a desert. This pitch-shot requires precision, determination, and ability.

6th HOLE 450 yards Bogey 5

A testing, uphill, long, tiger hole, which only the longest hitters can approach in two shots. Into a headwind a strictly par 5 and a test of courage and endurance.

7th HOLE 476 yards Bogey 5

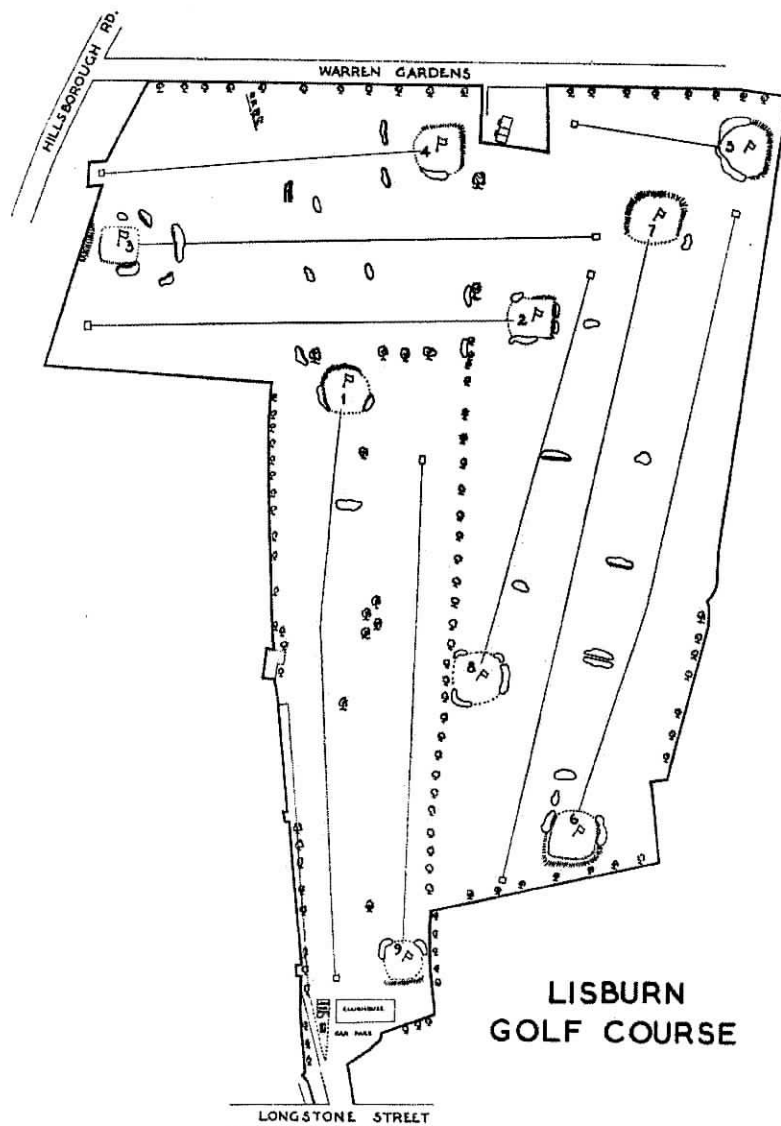
An elevated tee presenting a drive on to a plateau does not allow for any error on right or left. Again a strictly par 5 hole with an exceedingly difficult third shot to the pin demanding power golf.

8th HOLE 306 yards Bogey 4

The green, nestling at the foot of sentinel trees, is closely guarded by treacherous sand traps and grass bunkers. A hole of character and beauty which inspires even the most faint-hearted.

9th HOLE 368 yards Bogey 4

The drive from the medal tee has been described by a great professional as a carry over 130 yards into an egg cup. Certainly the guardians of the fairway in the shape of two giant oaks, and a line of equally majestic trees on the left, require a long and accurate carry through a gap of not more than 20 yards. A splendid finishing hole with the home green guarded closely by bunkers and trees and requiring accuracy and judgment to obtain the strict par figure.



BOGEY TABLE

Hole	Yards	Bogey	Stroke Index	Hole	Yards	Bogey	Stroke Index
1	406	4	7	10	406	4	4
2	293	4	13	11	293	4	10
3	334	4	3	12	334	4	6
4	221	3	15	13	221	3	16
5	135	3	17	14	135	3	18
6	450	5	9	15	450	5	2
7	476	5	1	16	476	5	8
8	306	4	11	17	306	4	12
9	368	4	5	18	368	4	14
Out	2989	36		In	2989	36	
				Out	2989	36	
				Total	5978	72	

SSS = 71

SUBSCRIPTIONS FOR TEMPORARY MEMBERS

Gentlemen	£ s. d.
Day	7 6
Day (playing with Member)	4 0
Saturday, Sunday or Holiday	10 0
Saturday, Sunday or Holiday (playing with Member)	7 6
Month	1 10 0
Ladies	
Day	5 0
Day (playing with Member)	3 0
Saturday, Sunday or Holiday	10 0
Saturday, Sunday or Holiday (playing with Member)	7 6
Month	1 0 0
Juveniles (under 18 years)	
Day	1 0
Saturday or Holiday	1 6
Month	5 0

Members of Services and R.U.C. (Daily, except Saturday) 5 0

Members of Services and R.U.C. (Sunday) 10 0

Captains and Secretaries of Golf Clubs, no charge.