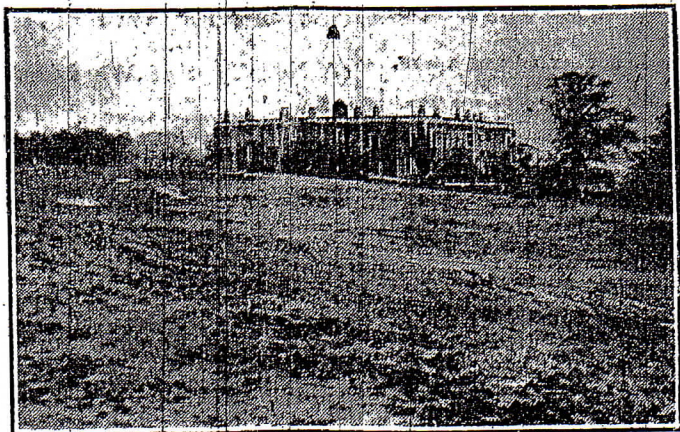


# A ROUND OF GOLF AT TEMPLENEWSAM.



A VIEW OF THE TENTH HOLE.

AT Templenewsam, in about three months' time, the citizens of Leeds will have a really first-class golf course, which, in time, should be as good as any inland course in Yorkshire, and which, for some years to come, may possibly claim to be the finest municipal course in England.

Under the skilled direction of the foremen and leading hands of Messrs. C. A. Mackenzie and Co., rapid progress is being made with the work of construction, which has found employment for many of the workless, and it is now possible to get a pretty good idea of what a round here will be like.

The normal length of the course will be about 6,000 yards, but it can be lengthened almost indefinitely should occasion demand. To get to the clubhouse and first tee, get off the Halton car at the Irwin Arms and walk about 300 yards down the accommodation road.

The round will be found to work itself out as follows:—

First hole: Tee near the clubhouse railings. A nice two-shotter of about 380 yards to a green tucked away prettily in a corner by a wood. Some of the undergrowth has been taken out of the wood to allow a sliced second shot to be extricated without too much difficulty.

Second: 300 yards down hill through a gap cut in a belt of woodland. Approach is over a clear stream running diagonally across the fairway just short of the green; an excellent water hazard.

Third: This and the succeeding holes up to and including the seventh are laid out over a tangle of subsidences due to old colliery workings which provide undulations and hummocks of an interesting character, such as are seldom found elsewhere than on seaside sand dunes. Third is a long hole of 440 yards, with a green so constructed as to make the best line to the hole well to the right of the direct line.

## LOVELY SCENERY.

Fourth: A nice pitch of 150 yards over bunkers made out of the broken ground due to subsidences. Green is cunningly fashioned on a natural plateau.

Fifth: 340 yards, back to the side of the second green. A line of bunkers put in to separate this fairway from the sixth makes the hole slightly dog-legged.

Sixth: Nearly 400 yards. Slight rise the whole way to a long narrow green curling round the contour of the hillside.

Seventh: A short hole of 150 yards, with a

very pretty green made in a cutting in the woodland. Surrounded by small beech, silver birch and evergreens.

Eighth: About 500 yards to a terraced green in what has been a ploughed field, but is now sown with grass, which is coming along very nicely.

Ninth: This takes us into a fresh zone of the estate, into the home park in which the Mansion is situated. There is a short walk through a belt of woodland to the tee. Hole is about 400 yards in length, but downhill.

Tenth: A good, full two-shot hole on top of a boldly constructed plateau green which is already a great improvement to the landscape. The spring known as Jacob's Well issues from the side of the hill below the green. Lovely views are obtainable from this corner of the course.

## ALD. WILSON'S OBJECTION.

Eleventh: A very pretty short hole of 140 yards with the green about 60 yards from the sunk fence on the south side of the Mansion. For some reason not apparent, Alderman Wilson has objected to the position of this green. From a golfing point of view, it is in an ideal spot and any alteration in the plan will detract very much from this corner of the links.

Twelfth: A good type of drive and pitch hole (330 yards) along the top of the ridge on which the house stands. Very extensive views and generally a pleasant breeze to be found here.

Thirteenth: 380 yards down hill to a saucer-like green well bunkered.

Fourteenth: A short hole with an absolutely natural green.

Fifteenth: 350 yards with a green near to the sixth.

Sixteenth: Another 300 yards hole leading homewards.

Seventeenth: 290 yards. The only hole of its type in the round. A section of woodland has been cleared to make the fairway, but one or two trees are left to tempt the big hitter to go straight for the green over the tops of the trees or between them. It offers a sporting risk to the long driver.

Eighteenth: A pleasant home hole of 400 yards to a large undulating green near the clubhouse fence.

To the right of the first fairway is a large space of fine old turf which may be used as a practice ground and for lessons to beginners—a priceless asset on a public course.