

16th Tee (231 yds.)

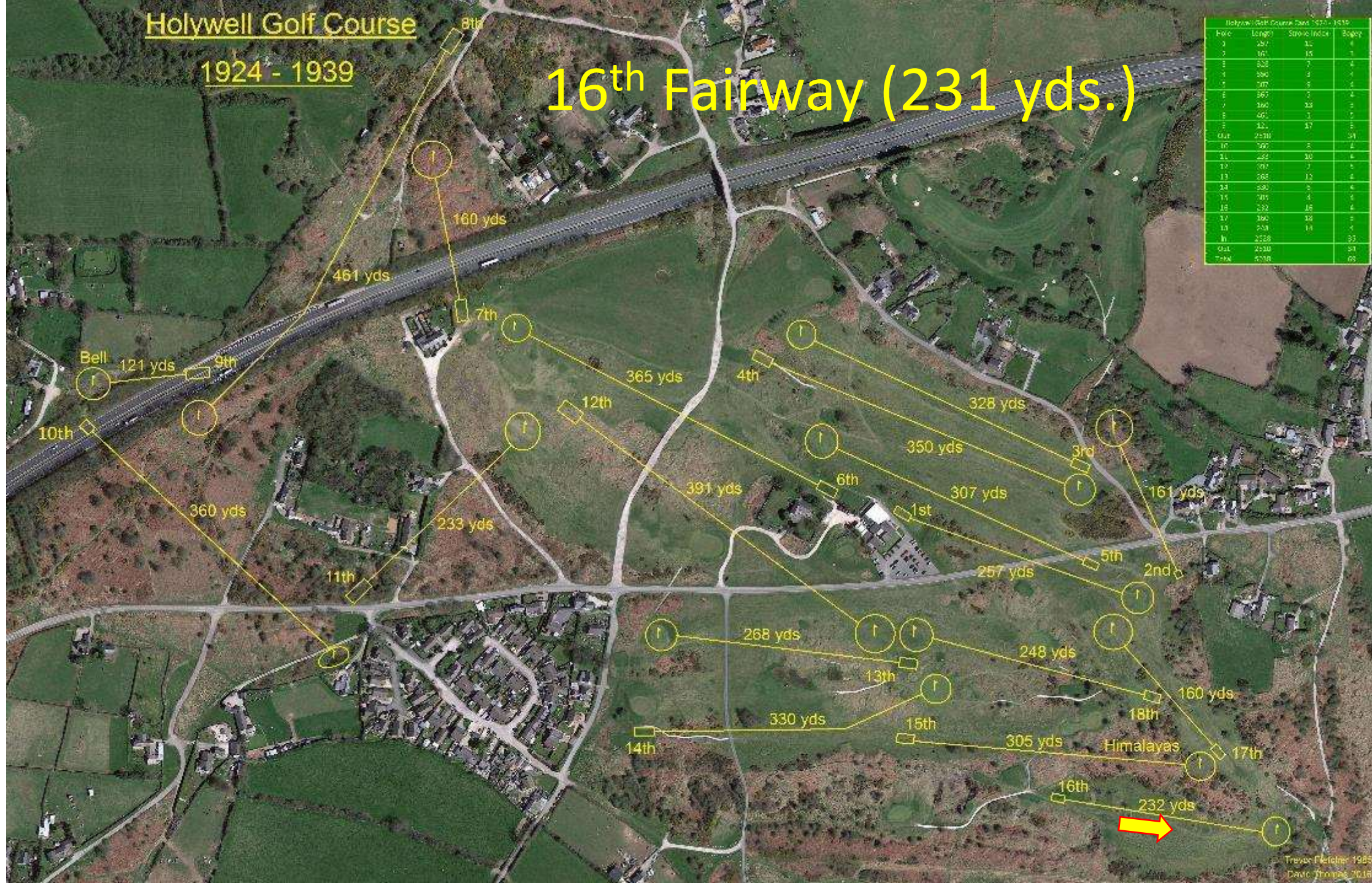


Holywell Golf Course

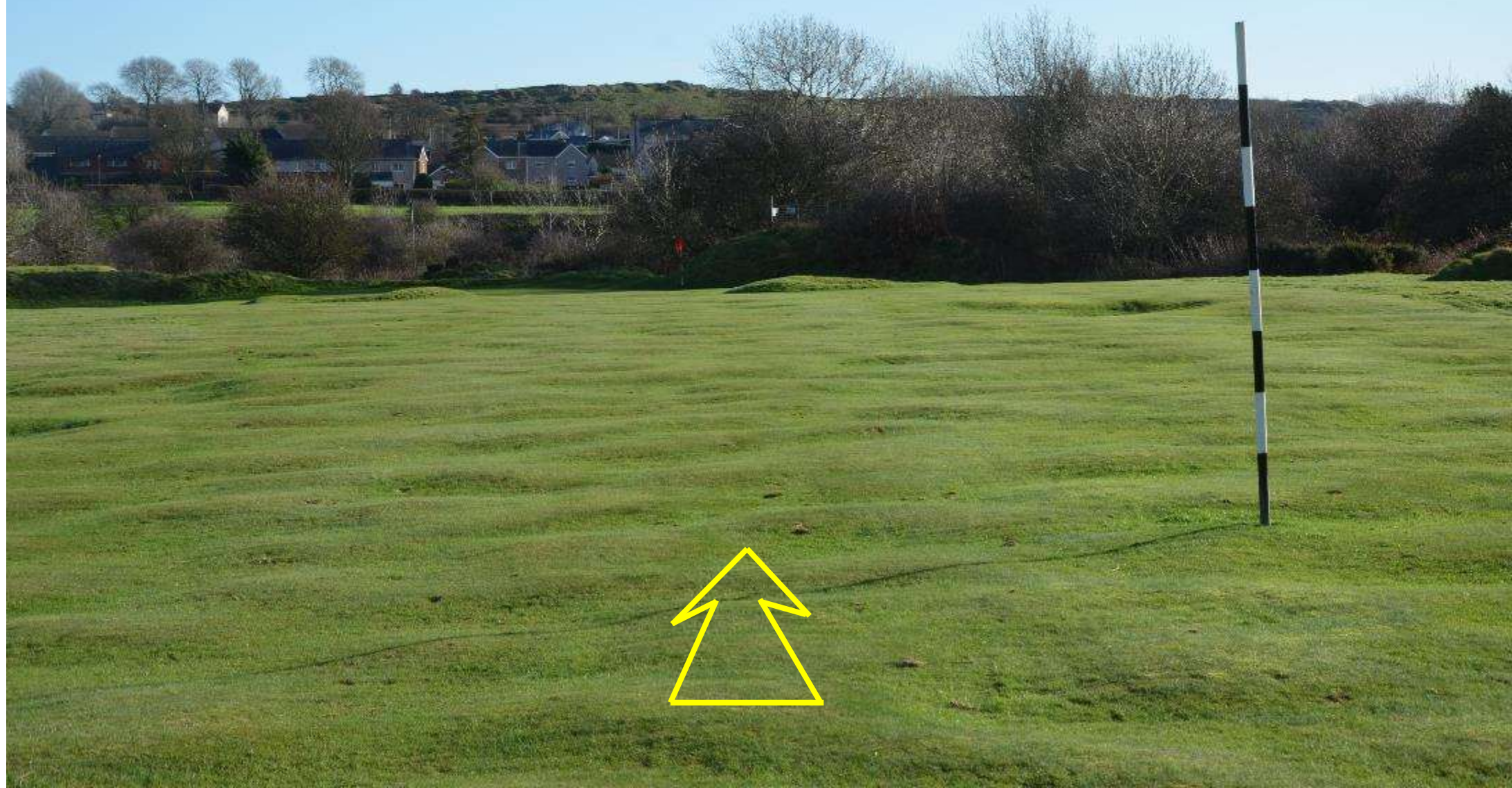
1924 - 1939

16th Fairway (231 yds.)

Hole	Length	Stroke Index	Bogey
1	287	10	4
2	161	15	3
3	328	7	4
4	350	9	4
5	167	5	4
6	365	3	4
7	160	13	3
8	461	1	5
9	121	17	3
Out	2530		34
10	360	5	4
11	233	10	4
12	391	7	4
13	268	12	4
14	330	9	4
15	305	6	4
16	232	16	4
17	305	14	4
18	160	18	4
In	2528		33
Out	2530		34
Total	4058		68



16th Fairway (231 yds.)



Holywell Golf Course

1924 - 1939

16th Green (231 yds.)

Holywell Golf Course Data 1924 - 1939			
Hole	Length	Stroke Index	Bogey
1	287	10	4
2	161	15	3
3	328	7	4
4	350	9	4
5	167	5	4
6	365	3	4
7	160	13	3
8	461	1	5
9	121	17	3
Out	2530		34
10	360	5	4
11	233	10	4
12	391	3	5
13	268	12	4
14	330	8	4
15	305	6	4
16	232	16	4
17	305	14	5
18	160	18	4
In	2528		33
Out	2530		34
Total	5058		68



16th Green (231 yds.)



Holywell Golf Course

1924 - 1939

17th Tee (160 yds.)

Hole	Length	Stroke Index	Bogey
1	160	1	4
2	161	15	4
3	328	7	4
4	350	9	4
5	307	5	4
6	365	3	4
7	391	13	5
8	461	11	5
9	360	17	5
10	257	1	4
11	268	13	4
12	248	9	4
13	305	5	4
14	330	1	4
15	330	1	4
16	232	15	4
17	160	11	4
18	232	1	4
19	232	1	4
20	232	1	4
21	232	1	4
22	232	1	4
23	232	1	4
24	232	1	4
25	232	1	4
26	232	1	4
27	232	1	4
28	232	1	4
29	232	1	4
30	232	1	4
31	232	1	4
32	232	1	4
33	232	1	4
34	232	1	4
35	232	1	4
36	232	1	4
37	232	1	4
38	232	1	4
39	232	1	4
40	232	1	4
41	232	1	4
42	232	1	4
43	232	1	4
44	232	1	4
45	232	1	4
46	232	1	4
47	232	1	4
48	232	1	4
49	232	1	4
50	232	1	4
51	232	1	4
52	232	1	4
53	232	1	4
54	232	1	4
55	232	1	4
56	232	1	4
57	232	1	4
58	232	1	4
59	232	1	4
60	232	1	4
61	232	1	4
62	232	1	4
63	232	1	4
64	232	1	4
65	232	1	4
66	232	1	4
67	232	1	4
68	232	1	4
69	232	1	4
70	232	1	4
71	232	1	4
72	232	1	4
73	232	1	4
74	232	1	4
75	232	1	4
76	232	1	4
77	232	1	4
78	232	1	4
79	232	1	4
80	232	1	4
81	232	1	4
82	232	1	4
83	232	1	4
84	232	1	4
85	232	1	4
86	232	1	4
87	232	1	4
88	232	1	4
89	232	1	4
90	232	1	4
91	232	1	4
92	232	1	4
93	232	1	4
94	232	1	4
95	232	1	4
96	232	1	4
97	232	1	4
98	232	1	4
99	232	1	4
100	232	1	4
101	232	1	4
102	232	1	4
103	232	1	4
104	232	1	4
105	232	1	4
106	232	1	4
107	232	1	4
108	232	1	4
109	232	1	4
110	232	1	4
111	232	1	4
112	232	1	4
113	232	1	4
114	232	1	4
115	232	1	4
116	232	1	4
117	232	1	4
118	232	1	4
119	232	1	4
120	232	1	4
121	232	1	4
122	232	1	4
123	232	1	4
124	232	1	4
125	232	1	4
126	232	1	4
127	232	1	4
128	232	1	4
129	232	1	4
130	232	1	4
131	232	1	4
132	232	1	4
133	232	1	4
134	232	1	4
135	232	1	4
136	232	1	4
137	232	1	4
138	232	1	4
139	232	1	4
140	232	1	4
141	232	1	4
142	232	1	4
143	232	1	4
144	232	1	4
145	232	1	4
146	232	1	4
147	232	1	4
148	232	1	4
149	232	1	4
150	232	1	4
151	232	1	4
152	232	1	4
153	232	1	4
154	232	1	4
155	232	1	4
156	232	1	4
157	232	1	4
158	232	1	4
159	232	1	4
160	232	1	4
161	232	1	4
162	232	1	4
163	232	1	4
164	232	1	4
165	232	1	4
166	232	1	4
167	232	1	4
168	232	1	4
169	232	1	4
170	232	1	4
171	232	1	4
172	232	1	4
173	232	1	4
174	232	1	4
175	232	1	4
176	232	1	4
177	232	1	4
178	232	1	4
179	232	1	4
180	232	1	4
181	232	1	4
182	232	1	4
183	232	1	4
184	232	1	4
185	232	1	4
186	232	1	4
187	232	1	4
188	232	1	4
189	232	1	4
190	232	1	4
191	232	1	4
192	232	1	4
193	232	1	4
194	232	1	4
195	232	1	4
196	232	1	4
197	232	1	4
198	232	1	4
199	232	1	4
200	232	1	4
201	232	1	4
202	232	1	4
203	232	1	4
204	232	1	4
205	232	1	4
206	232	1	4
207	232	1	4
208	232	1	4
209	232	1	4
210	232	1	4
211	232	1	4
212	232	1	4
213	232	1	4
214	232	1	4
215	232	1	4
216	232	1	4
217	232	1	4
218	232	1	4
219	232	1	4
220	232	1	4
221	232	1	4
222	232	1	4
223	232	1	4
224	232	1	4
225	232	1	4
226	232	1	4
227	232	1	4
228	232	1	4
229	232	1	4
230	232	1	4
231	232	1	4
232	232	1	4
233	232	1	4
234	232	1	4
235	232	1	4
236	232	1	4
237	232	1	4
238	232	1	4
239	232	1	4
240	232	1	4
241	232	1	4
242	232	1	4
243	232	1	4
244	232	1	4
245	232	1	4
246	232	1	4
247	232	1	4
248	232	1	4
249	232	1	4
250	232	1	4
251	232	1	4
252	232	1	4
253	232	1	4
254	232	1	4
255	232	1	4
256	232	1	4
257	232	1	4
258	232	1	4
259	232	1	4
260	232	1	4
261	232	1	4
262	232	1	4
263	232	1	4
264	232	1	4
265	232	1	4
266	232	1	4
267	232	1	4
268	232	1	4
269	232	1	4
270	232	1	4
271	232	1	4
272	232	1	4
273	232	1	4
274	232	1	4
275	232	1	4
276	232	1	4
277	232	1	4
278	232	1	4
279	232	1	4
280	232	1	4
281	232	1	4
282	232	1	4
283	232	1	4
284	232	1	4
285	232	1	4
286	232	1	4
287	232	1	4
288	232	1	4
289	232	1	4
290	232	1	4
291	232	1	4
292	232	1	4
293	232	1	4
294	232	1	4
295	232	1	4
296	232	1	4
297	232	1	4
298	232	1	4
299	232	1	4
300	232	1	4
301	232	1	4
302	232	1	4
303	232	1	4
304	232	1	4
305	232	1	4
306	232	1	4
307	232	1	4
308	232	1	4
309	232	1	4
310	232	1	4
311	232	1	4
312	232	1	4
313	232	1	4
314	232	1	4
315	232	1	4
316	232	1	4
317	232	1	4
318	232	1	4
319	232	1	4
320	232	1	4
321	232	1	4
322	232	1	4
323	232	1	4
324	232	1	4
325	232	1	4
326	232	1	4
327	232	1	4
328	232	1	4
329	232	1	4
330	232	1	4
331	232	1	4
332	232	1	4
333	232	1	4
334	232	1	4
335	232	1	4
336	232	1	4
337	232	1	4
338	232	1	4
339	232	1	4
340	232	1	4
341	232	1	4
342	232	1	4
343	232	1	4
344	232	1	4
345	232	1	4
346	232	1	4
347	232	1	4
348	232	1	4
349	232	1	4
350	232	1	4
351	232	1	4
352	232	1	4
353	232	1	4
354	232	1	4
355	232	1	4
356	232	1	4
357	232	1	4
358	232	1	4
359	232	1	4
360	232	1	4
361	232	1	4
362	232	1	4
363	232	1	4
364	232	1	4
365	232	1	4
366	232	1	4
367	232	1	4
368	232	1	4
369	232	1	4
370	232	1	4
371	232	1	4
37			

17th Tee (160 yds.)



Holywell Golf Course

1924 - 1939

17th Green (160 yds.)

Hole	Length	Stroke Index	Bogey
1	287	10	4
2	161	15	3
3	328	7	4
4	350	9	4
5	257	5	4
6	307	8	4
7	365	3	4
8	160	12	3
9	461	1	5
10	360	17	5
11	233	14	4
12	391	6	5
13	268	11	4
14	330	4	4
15	305	16	4
16	232	13	4
17	160	18	4
18	305	1	4
In	2728		33
Out	2530		31
Total	5258		64



17th Green (160 yds.)

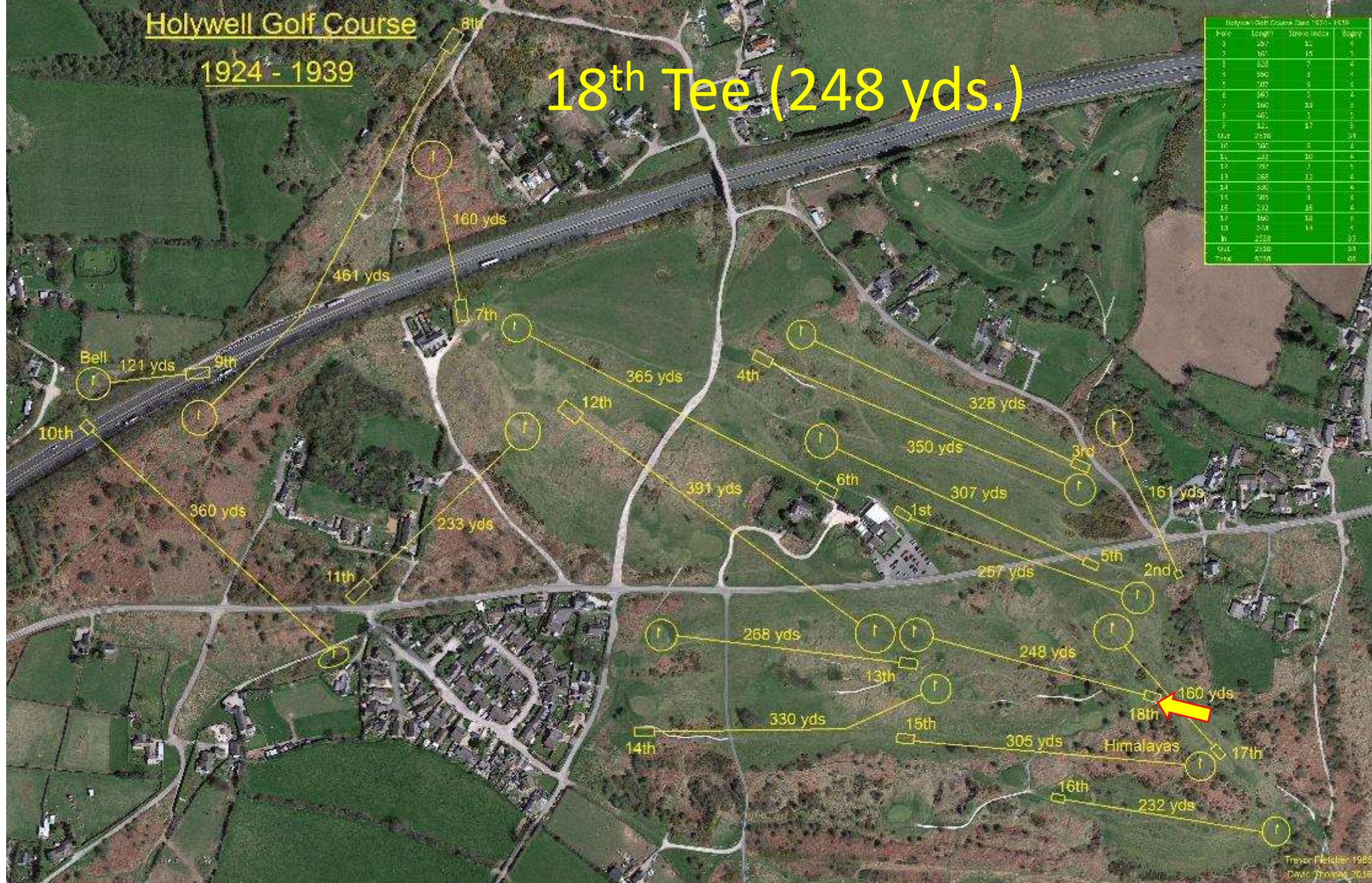


Holywell Golf Course

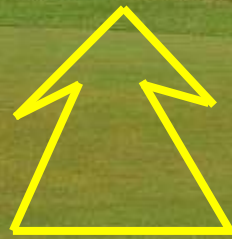
1924 - 1939

18th Tee (248 yds.)

Hole	Length	Stroke Index	Bogey
1	121	10	4
2	161	15	4
3	328	7	4
4	350	9	4
5	307	5	4
6	365	3	4
7	391	1	4
8	461	17	5
9	360	12	4
10	360	11	4
11	233	13	4
12	268	14	4
13	248	16	4
14	330	8	4
15	305	6	4
16	232	18	4
17	305	1	4
18	248	2	4
Out	2530		54
In	2530		54
Total	5060		108



18th Tee (248 yds.)

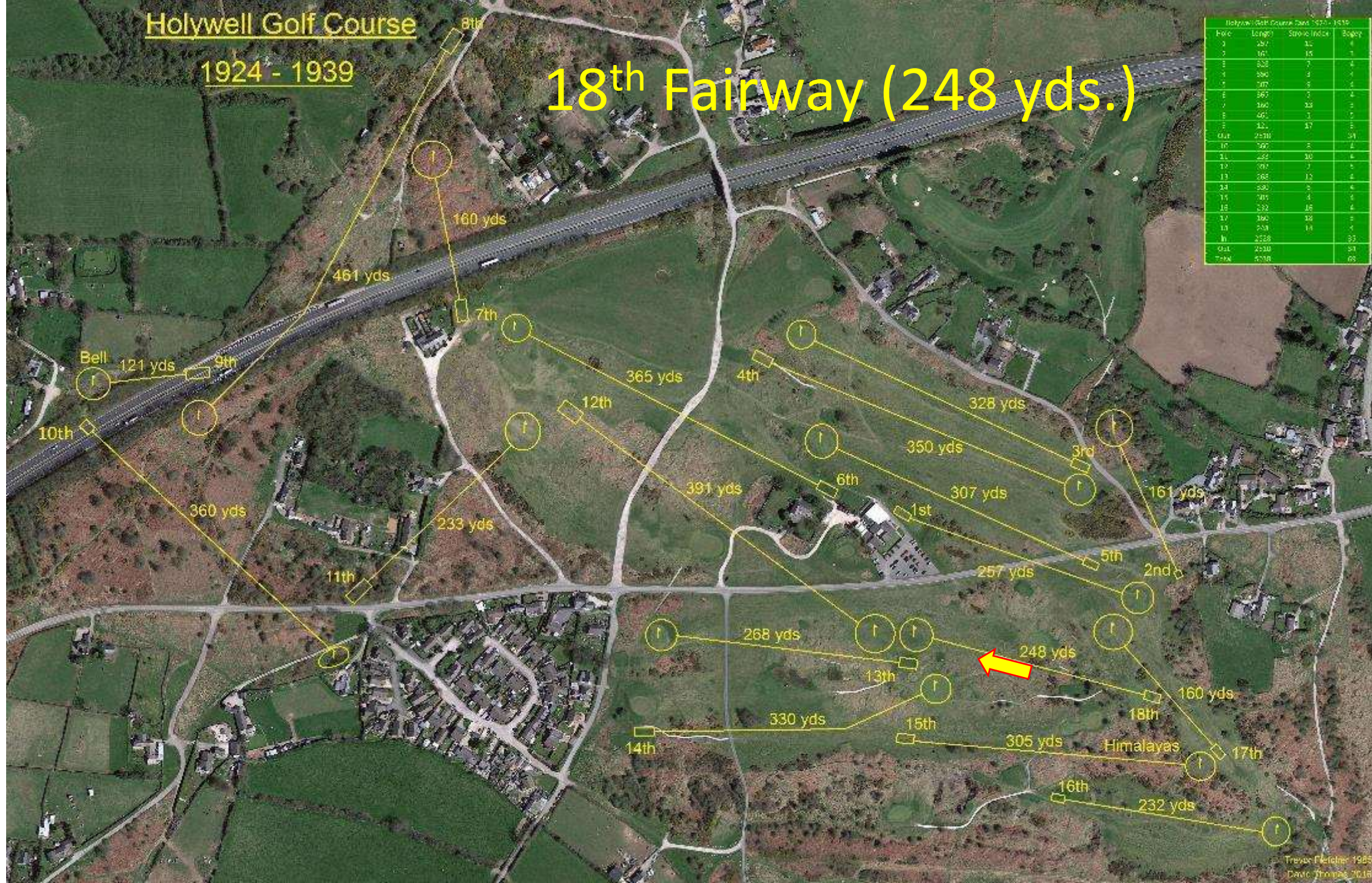


Holywell Golf Course

1924 - 1939

18th Fairway (248 yds.)

Hole	Length	Stroke Index	Par
1	287	10	4
2	161	15	3
3	328	7	4
4	350	9	4
5	167	5	3
6	365	3	4
7	160	13	3
8	461	1	4
9	121	17	3
Out	2530		58
10	360	5	4
11	233	10	4
12	391	7	4
13	268	12	4
14	330	9	4
15	305	6	4
16	232	16	4
17	305	14	4
18	248	18	4
In	2528		58
Out	2530		58
Total	5058		66



18th Fairway (248 yds.)



Holywell Golf Course

1924 - 1939

18th Green (248 yds.)

Hole	Length	Stroke Index	Bogey
1	287	10	4
2	161	15	3
3	328	7	4
4	350	9	4
5	167	5	4
6	365	3	4
7	160	13	3
8	461	1	5
9	121	17	3
Out	2530		34
10	360	5	4
11	233	10	4
12	391	7	5
13	268	12	4
14	330	9	4
15	305	6	4
16	232	16	4
17	305	14	5
18	248	18	4
In	2528		33
Out	2530		34
Total	4058		68

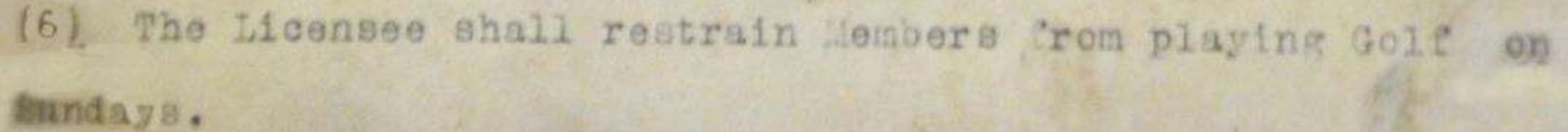


18th Green (248 yds.)



Playing Golf on Sundays

June 18th 1906 – Clause (6) of the license agreed with Grosvenor estates prohibited the playing of golf on Sundays.



(6) The Licensee shall restrain Members from playing Golf on Sundays.

December 5th 1931 – Letter from R. S. Jones (secretary) to E. Redfern (Grosvenor Estates) informing him that the club members had voted in favour of Sunday golf. The General Meeting was held on November 21st 1931.

Sir

Dec: 5 1931

I am directed by the Holzeall Golf Club to inform you that at a general meeting of the members of the Club specially convened to consider the advisability or otherwise of Sunday golf, it was decided by forty three votes to fourteen to ask His Grace The Duke of Westminster to vary the terms of the license granted to the Club so as to permit the playing of Golf on Sunday.

December 5th 1931 – The main reasons given for Sunday golf were that Holywell was the only club in Flintshire that did not permit Sunday golf, that in 1906 most of the members were “men of leisure” whereas now most of the members were professional and business men to whom Sunday golf would be a “great boon”. In addition, it would give rise to an increase in membership and therefore increased revenue (and by the way better grazing as well).

Today Sunday golf is played throughout North Wales and at the present time the Holywell course is the only one in Flintshire on which the playing of Sunday Golf is not permitted.

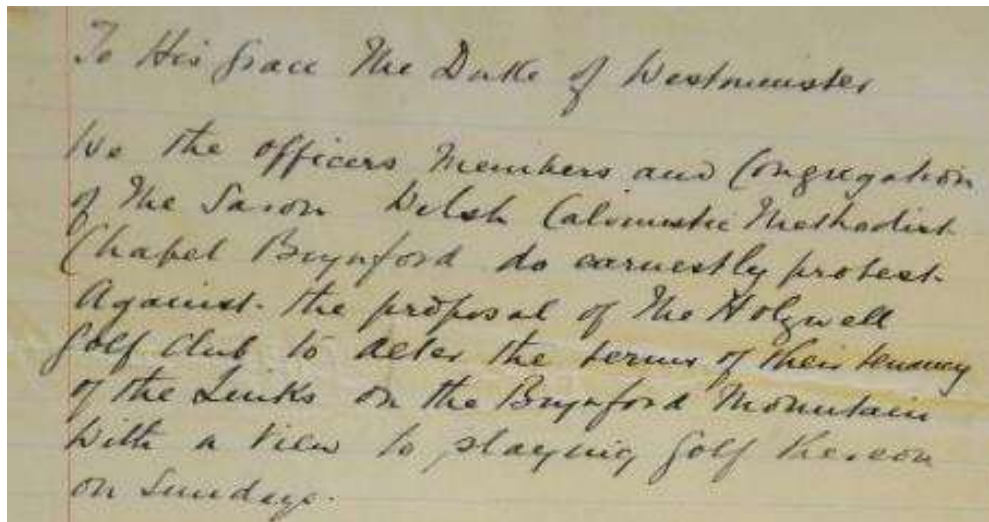
In 1906, when the license was first granted, the membership of the Holywell Club was almost entirely composed of men of leisure who were generally able to play golf whenever they felt so disposed. Today the membership consists very largely of professional and business men to whom permission to play golf on Sunday would confer a great boon. In many instances members of the Holywell golf club travel on Sunday to other courses in the county to obtain a game on Sunday.

I aim to add that my committee anticipates that the granting of permission to play golf on Sunday

will result in an increase of membership and thereby provide much needed additional revenue, which will incidentally enable the Club to accomplish more for the improvement of the value of the pasturage rights of the commons.

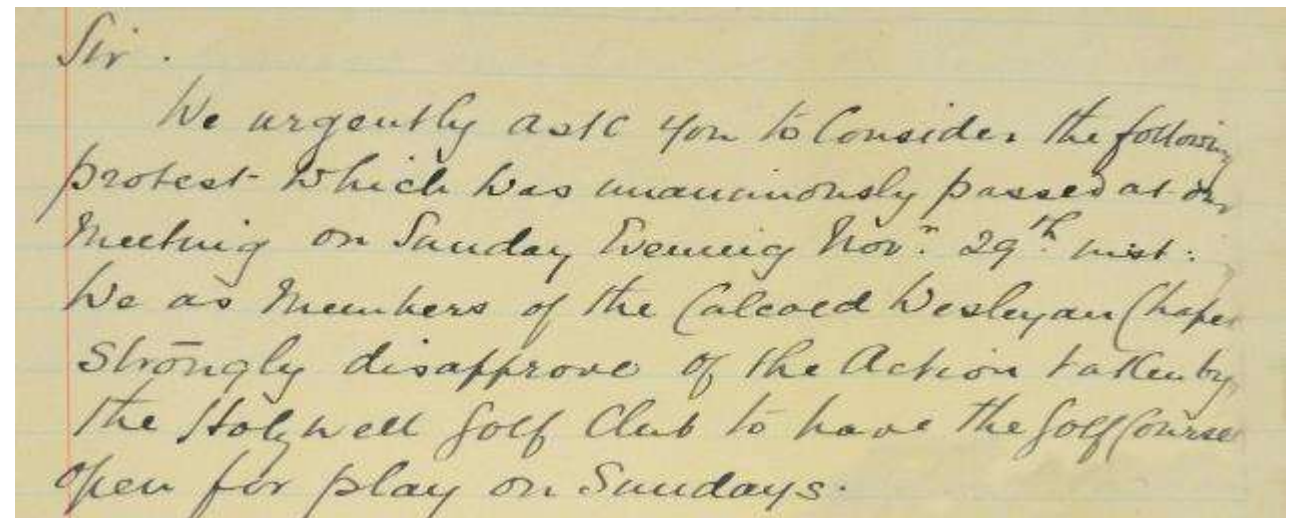
However, even before the letter from the club asking for permission to play on Sundays was written, a protest campaign was afoot! Here are the opening shots from the local chapels.

Saron Chapel 2/12/31

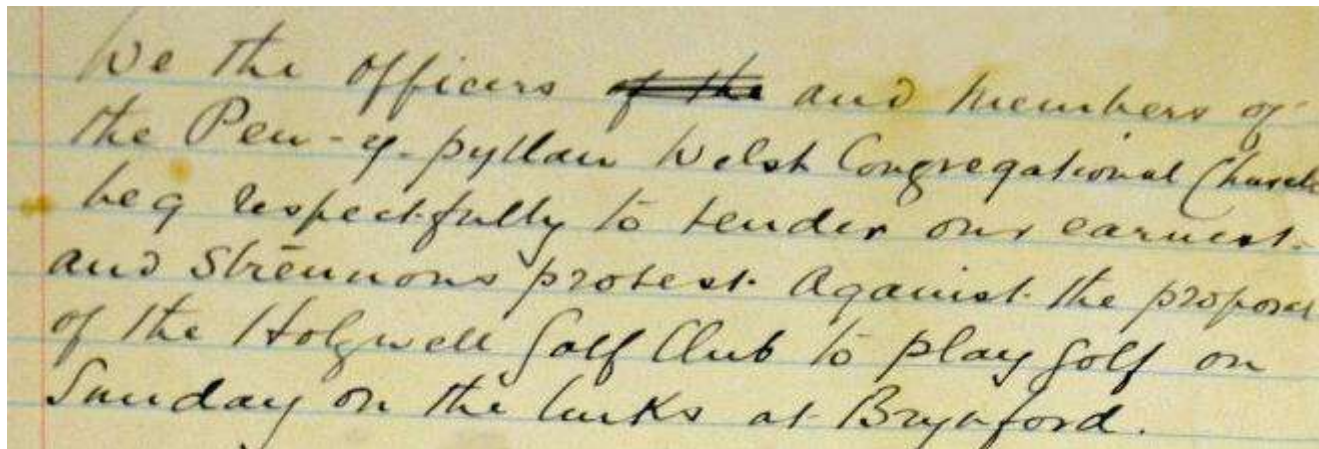


To His Grace The Duke of Westminster
We the officers Members and Congregation
of the Saron Welsh Calvinistic Methodist
Chapel Brynford do earnestly protest
Against the proposal of the Holywell
Golf Club to alter the terms of their tenancy
of the Links on the Brynford Mountain
with a view to playing golf there on
Sundays.

Calcoed Chapel 30/11/31



Sir.
We urgently ask you to consider the following
protest which was unanimously passed at the
meeting on Sunday Evening Nov. 29th inst.
We as Members of the Calcoed Wesleyan Chapel
strongly disapprove of the action taken by
the Holywell Golf Club to have the golf course
open for play on Sundays.



We the officers ~~of the~~ and Members of
the Pen-y-pyllau Welsh Congregational Church
beg respectfully to tender our earnest
and strenuous protest Against the proposal
of the Holywell Golf Club to play golf on
Sunday on the links at Brynford.

Pen-y-Pyllau Chapel 6/12/31

Here is the opening salvo against Sunday golf from Brynford Parish church!

TELEPHONE 1
85 HOLYWELL.

BRYNFORD RECTORY,
HOLYWELL,
N. WALES.

Dec. 3. 1931

My Dear Mr Redfern

Please find herewith
enclosures re Protest against Sunday
play on the Holywell Golf Course.
I attended the Club's Special General
meets when the proposal was discussed &
spoke against it. Five other members from
Holywell spoke against the proposal - 4 of
them Ex-Captains of the Club.

I plead with you to do
your best for me & my parish.
Yours very sincerely
St Hopkin Jones.

There was also some support for the protest from within the club, 4 past captains opposed it as well.