

## CHAPTER 6

### 1961 - 1988 THE MODERNISING YEARS

The first period in the history of the Club to date is dominated by the question of a new Club House. As we have seen it was not a new problem; the first proposals were put forward in 1924 and from time to time thereafter various suggestions were aired but were usually rejected due to lack of money; consequently Disley remained a golf club with some of the finest views in the country from its course but with a Club House from which members had virtually no sight of the surroundings; in fact the men's room required the lights on even on the brightest summer day.

With the increase in membership due to the upsurge in interest in golf, the Club House was beginning to prove inadequate in size to cope with the increased membership and so in 1962 the Captain decided to try and force the issue of a new Club House on the course. Without reference to the Directors he had plans drawn up for a proposed new Club House on the course; these were displayed one weekend and as may be expected caused quite a stir. Unfortunately the question of financing the project had not been considered other than by increasing subscriptions and although there was a strong body of opinion that a new Club House was required the suggestion that subscriptions may have to be trebled to pay for it had an adverse effect on the majority of members.

The plans did at least have one desired effect. It brought the whole question of the Club House to the fore but it also split the Club down the middle. The Directors first of all looked at the various alternatives. The first of these was the purchase of 'Oaklands' (the house by the side of the present 11th green), ironically a property which had been built by a Mr. Crozier on land which had been purchased from the Club in 1933 (hence the name 'Croziers' for the 11th hole). This was finally rejected because it was considered that planning permission would not be granted for turning the house into a Club House.

The second alternative that was considered was to turn 'Stanley Hall' into a new Club House. Although this had many advantages this too was finally rejected as being too expensive to provide the accommodation which would be required and the problems of rehousing the Secretary, Neville Parker who had by then held office for over 30 years and had been the tenant for close on 40 years. This did in fact remain as one of the alternatives which were put to the members; it was never considered a viable proposition.

The two proposals which were eventually put to the members at an Extraordinary Meeting in February 1964 were a 'New Club House' on the course and an 'Extension to the present Club House'. The result of the postal ballot on these proposals was 2 to 1 in favour of extending the old Club House. This was due to three distinct factors. The first was cost. The original proposal put forward in 1962 still worried a lot of members who could see subscriptions being increased dramatically to pay for such an ambitious scheme. The second was that there was no alternative to the spending of money, consequently it was a matter of voting for the cheapest scheme and thirdly there was the unequal distribution of votes. At that time there were still a lot of old members who had lost interest in the Club but who still held shares and whenever a controversial subject arose their proxies were sought to enable the proposal to be defeated.

There was still to be a further effort at that time to keep the Club House question alive. An Extraordinary Meeting was called by a number of members to consider the alternative proposal which had not been available at the original meeting. That was 'to do nothing at present but to save for a new Club House in the future'. This proposal was eventually defeated at the meeting by 88 votes to 87. This indicates how much the Club was split at that time.

So ended the most concerted attempt up to that time to get a Club House on the course. In the next two years some £17,500 was spent on extending the old Club House and it took until 1972 for this amount to be cleared. Admittedly £2,000 of this was for a car park which by this time was badly needed because the only parking was on the verge of Jacksons Edge and the Club had continual problems with residents. By then there were new Directors and a lot of new members. Also to a great extent the voting rights of members had been sorted out so that when further proposals were raised about building a new Club House the dissenting voices were in the minority.

But probably the most important lesson to be learnt from this episode was that any proposals of this kind required the backing of the members or at least the members had to be carried along with the scheme. If the membership is turned against a scheme it is nearly impossible to change them and by publishing plans which showed a three fold increase in subscriptions because the financing had not been thought out first, it was doomed to failure before it started.

This mistake was not made when the Club House question was raised again in the 1970's, although the first proposals had to be abandoned due to unforeseen circumstances. The 1973 proposal was to build a new Club House close to what is now the Ladies 12th tee, sell the land above Stanley Hall, which includes the practice ground and the 15th, 16th and 17th holes and build 3 new holes in the woods below the present 4th and 5th. Unfortunately, as soon as the Disley R.D.C. heard about this from sources within the Club a Tree Preservation Order was issued on the wood, which was later confirmed by the Environment Minister, which effectively stopped the plans due to lack of finance.

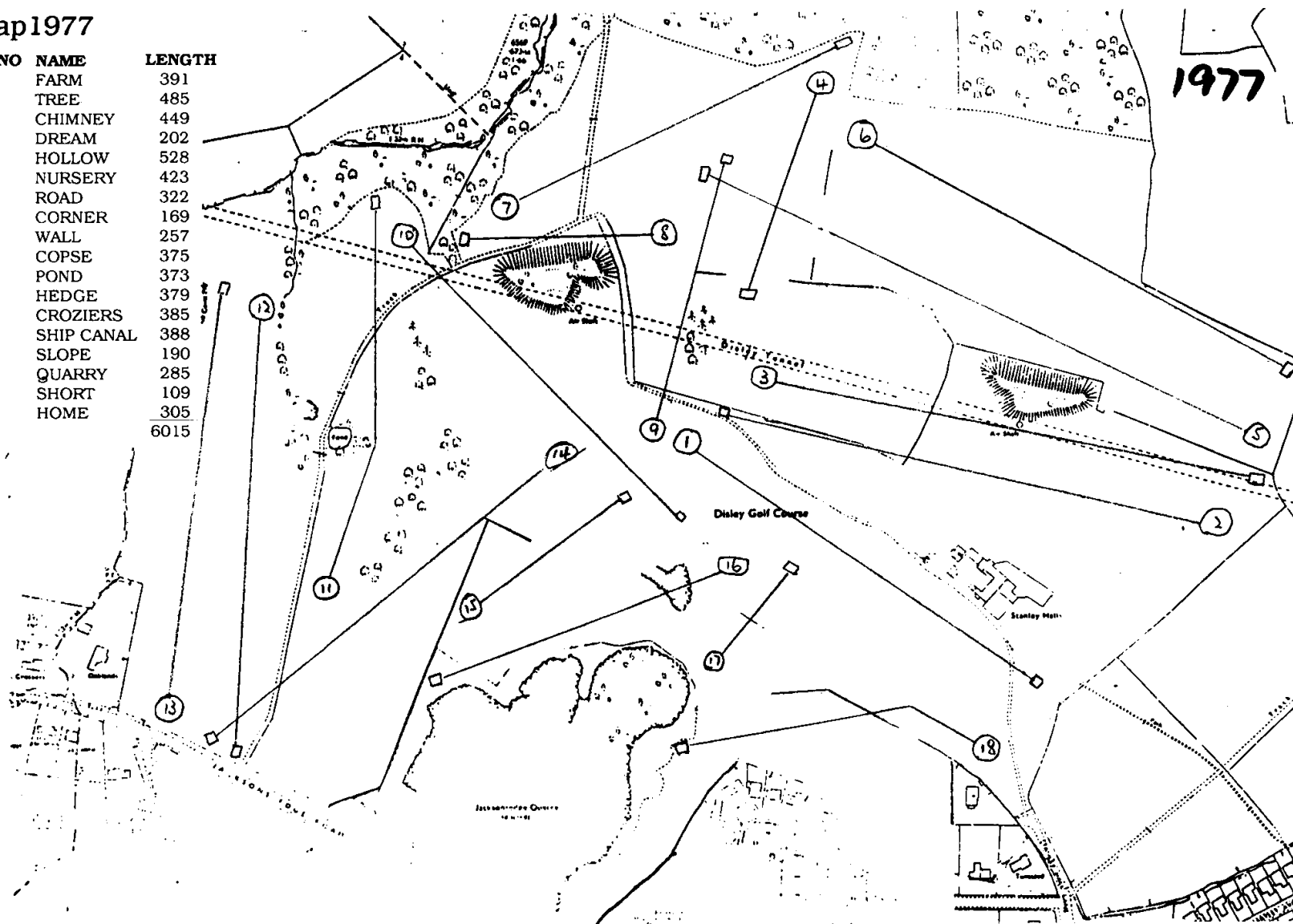
But the question of the new Club House would not go away and in 1976 it was agreed that no more money should be spent on the Old Club House and a new one should be built on the course as soon as possible. By March 1977 the Directors were in the position to approve the scheme submitted by Kenkast Limited subject to approval by Macclesfield District Council. The fates still had another twist, Kenkast went into liquidation. This, however, only delayed the inevitable and in 1979 the new Club House, which had for so long been the dream of members of the Club, was finally opened.

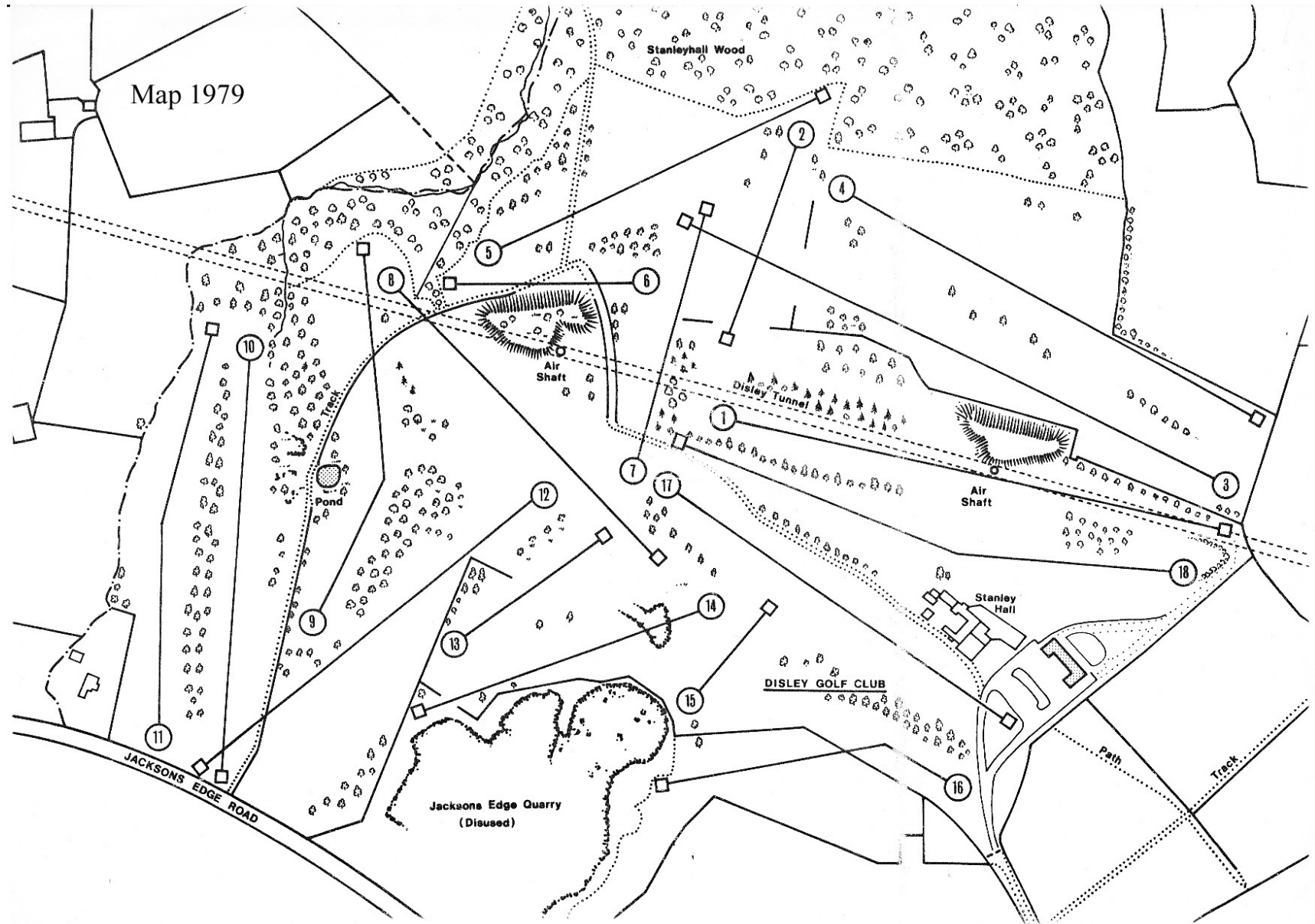
It is interesting to see how the £160,000 was eventually raised because this had always been the problem. Firstly, the land used as a car park surrounding the Telephone Exchange was sold for £18,500; then the old Club House was sold for £43,500; then 30 Life Subscriptions were offered for £ 1,000 each and two levies were imposed on members totalling £50 and lastly a Brewery Loan of £15,000 completed the funding. This was all done by the Directors without recourse to an Extraordinary General Meeting and plans were only made public once all the financial arrangements had been agreed. Although there was some dissent as to the levies at the time, the fact that Disley along with most other Club's in the area had a waiting list, deterred most objectors from resigning.

The opening of the new Club House also affected the course. The holes had to be renumbered (the old 3rd became the 1st etc. and the old 1st and 2nd became the 17th and 18th), and renamed in certain cases (the old 18th could no longer be called 'Home' and so was renamed 'Oak Tree'). But these were by no means the only alterations that took place on the course. With the upsurge in interest in golf in the 1960's, so was there an upsurge in golf equipment and the development in the golf ball. These developments all had the same basic object: more distance. Whilst in many ways this gave increased pleasure to the majority of golfers, it meant that courses were becoming comparatively shorter and we find that Disley like many Clubs had to look for extra length in the course. Greens are expensive to move although it was decided in 1971 that this was the appropriate action to take at the present 3rd. A new green was built some 30 yards behind the old one thus allowing a new tee to be built at the 4th which extended this hole by some 30 yards.

# Map1977

HOLE NO	NAME	LENGTH
1	FARM	391
2	TREE	485
3	CHIMNEY	449
4	DREAM	202
5	HOLLOW	528
6	NURSERY	423
7	ROAD	322
8	CORNER	169
9	WALL	257
10	COPSE	375
11	POND	373
12	HEDGE	379
13	CROZIERS	385
14	SHIP CANAL	388
15	SLOPE	190
16	QUARRY	285
17	SHORT	109
18	HOME	305
		6015





Other extensions during these years were at the 10th and 18th. The latter was extended twice first in 1968 when about 20 yards was added to the original length, and again in 1984 when it was lengthened to a par 5. Not all the new tees extended the length of the course. The new tees at the 14th and 16th built in 1978, altered the angle at which the hole was played and put more emphasis on straight driving although for a well struck drive the 16th probably plays shorter than from the old tee.

But the biggest change in the course layout was the change in the present 2nd and 3rd holes. In 1977 to try to introduce more variety into the course the 2nd (then the 4<sup>th</sup>) was shortened to a par 3 and the 3rd (then the 5<sup>th</sup>) extended to a par 5. Until then the course had consisted of 15 par 4 holes and 3 par 3's (of which 2 came within a space of 3 holes). While the present 1st had always been considered a bogey 5 when the lengths of holes were standardised by the R and A in 1971, this also became a par 4. While this change did not meet with universal approval in the Club and signalled the first real change in the original course as laid out in 1889, it did have the desired effect and is undoubtedly safer.

If, however a member had left the Club in 1960 and returned now it would not be the new tees that would be noticed, it would be the trees on the course. Up to the early 1960's the only trees on the course other than the woods to the right of the present 4th and 5th and behind the 8th and to the right of the 9th and 10th, were solitary trees to the left of the 6th green, the right of the 12th (now gone) and the big one on the right of the 18th. There were the hedges between the 1st tees and the 3rd green, on the right of the 2nd and along the path from the pond to the 10th tee, but that was all. As will be appreciated the course at that time was very bare and open and many a wayward drive remained unpunished. In the 1960's successive Committees had trees planted and that policy has continued from time to time to this day, so that the present members have a much more interesting and attractive course to play.

But of all the changes which have taken place on the course over this period, the one which received the universal approval of all members was the removal of the telegraph poles and wires along the line of the tunnel. From the digging of the tunnel in 1900 up to 1970, each generation of members had cursed the wires along the right hand side of the 1st hole and across in front of the 8th green and 9th tee (the wires had been put underground where they crossed the present 2nd and 7th holes). A special local rule allowed a shot to be replayed if a ball played at the 8th or 9th hit the wires. (It is recorded that on one occasion in the Captain's Prize, a member topped his drive at the 9th, hit the bank of the 8th green and bounced up and hit the wires. He replayed the drive, scored a par 4 and went on to win first prize). Besides being very inconvenient the drips off the wires killed the grass underneath which left the front of the 8th green in very poor condition. As will be appreciated it was with great pleasure when the wires were removed and the Telegraph poles cut down. There are still a few stumps remaining to remind members of those days.

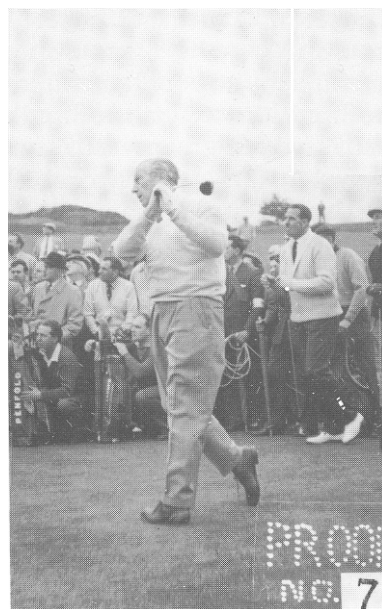
The question of water on the greens has been raised many times, usually when we have been blessed with a dry summer. It is something which has been investigated on three occasions very seriously. The first time was in 1947 when the club went as far as obtaining quotes for the work. Unfortunately the proposals failed due partly to lack of materials after the War and partly to lack of money as we saw in the last Chapter. The second attempt in 1974 in fact succeeded. A bore hole was sunk and piping was laid on to each green. Unfortunately the bore hole silted despite further drilling and all that remains of the well is the small hut between the drive and the wall behind the 16th green. But the piping remains although it is still a manual system it is still serviceable using mains water. As the Club were advised by the Turf Research Unit at Bingley in 1986 that the Disley greens should only be artificially watered very sparingly when the question was raised again, it is likely that nothing more will be heard of this proposal until the next very dry summer.

The final alteration to the course is one which is not yet complete (in 1989) but it is hoped that as the Club enters its 100th year will finally allow the 17th hole to be played as it was designed. As described in the first Chapter, one method of playing this hole, although not the one to be recommended, was along the path. In a dry summer this became about the only way to play this hole without deliberately driving onto the 18th way (a line made much more hazardous since the trees have been planted on either side of this hole). So in 1986 it was decided to bank this fairway to stop a well hit drive from finishing on the path. Time will tell whether this is successful but any attempt to improve the course is always worth trying.

The fact remains that although the Disley Golf Club has progressed dramatically from those early days, at no time more so than in the last 25 years, it still remains essentially a country golf club providing sporting golf in very pleasant surroundings. It has had its disputes and disagreements but it has survived not because it has been beholden to any individual although certain members have undoubtedly done more for the Club than others, but because it has remained a members Club. Every member has given something to the Club and if in return every member has had some little pleasure from the Club then the partnership is complete.



“Eric Lester – Holing out for a course record of 68 on  
2<sup>nd</sup> June 1962”



“Henry Cotton – Professional Exhibition  
2<sup>nd</sup> June 1962”

# CHAPTER 7

## THE LADIES SECTION

This is an attempt to provide some account of the formation of the Ladies Section, dealing mainly with the early formative years and the period in the Second World War when the section was re-formed after being dormant for approximately two years. Although Ladies had been admitted to the club from January 1892, the first general meeting of the Ladies Section was not held until 22nd July, 1895, when eleven ladies were present with Mr. R.C. Hutton in the Chair. It was resolved then and there to form a Ladies Committee and the following appointments were made -

**Lady Captain** - Mrs. A.B. Mayne

**Lady Secretary** - Miss Withington

**Lady Treasurer** - Miss E.J. Murray (always referred to as Miss Murray, being the elder daughter in the family).

It was arranged at this time that monthly competitions would take place on the first Tuesday of every month, and the competition fee of 6d must be paid before entrants went out to play golf. It is worth noting that the Ladies had their own Club Room from the inception of the Section being formed.

In 1897 the Committee decided to challenge Wilmslow, Marple and Cheadle to play a match against Disley. Unfortunately, no record remains of these matches ever being played, so we do not know the results. In 1897, the new Club House on Jacksons Edge Road was opened and it is curious to observe that despite this fact there were no Ladies Committee Meetings held between the A.G.M. in 1897 and that of 1898. No doubt the golf was just as enjoyable nevertheless. Mr. R.C. Hutton was still taking the Chair at each A.G.M. at this period of the Sections history and continued until 1913.

By 1900 there were eight members present at the A.G.M. and the following year this figure had dropped to five. It must be taken into account that the new railway tunnel had been cut out of the middle of the course for at least two years and a further two years were to go by until this task was complete. It could not have been easy for ladies to play golf whilst this work was in progress. Between the 1901 and 1902 AGMs, no Committee meetings were held - whether this was a good or bad sign we have no means of knowing. At the 1902 A.G.M. the Ladies Treasurer reported the bank balance had increased during the year from £1.19. 7d to £2.5.0d. (£2.25 in modern money). What riches!!

In 1903 there were complaints about the manner in which playing handicaps were given and it was agreed to add two gentlemen to the relevant committee so that fair play could be seen to be done! One of these gentlemen was Mr .R.P .Horsley, who at that time was deputy High Master of Manchester Grammar School.

By 1904 the Disley Ladies had agreed to join the Manchester & District Ladies Golf Challenge Cup Union. However, at the next committee meeting the Ladies were writing to the Men's Committee asking them to be good enough to pay the Entrance Fee of £1.1.0d and Annual Subscription of 10/6d. (Nothing changes much at Disley Golf Club - we still pay the levy on the Ladies Subscription to the E.L.G.U.).

In 1906 team matches were being played against Didsbury, Cheadle, Manchester and Burbage (now Cavendish). In 1907, Disley Ladies had joined the Cheshire County Club at a membership of 5/0d per annum, and on this occasion the men were not asked to pay!! Also, the same year the Section joined the English Ladies Golf Union. By 1908 four lady members from each of 14 local clubs were invited to play in an Open Meeting and the Men's Committee were asked to donate £5 to pay for the prizes - which they did. It was in 1908 that the Ladies decided that in the future they would play 18 holes in their monthly medal meetings as against 14 holes up to that time. In 1909 it was agreed that no Club matches be undertaken in that year because the section had so few golfers!! There were no competitions played in the winter of the same year owing to the very bad weather conditions which prevailed.

In the minutes of the 12th May 1914, the Ladies wrote to the Men's Committee expressing concern about the proposals being made to alter the Course. They were anxious that the Course should not be lengthened as a result of such proposal and they asked to see the plan of the suggested alterations. (Note - the alteration to the Course never took place because of the start of the Great War in August 1914). In 1915 the Men suggested to the Ladies that they undertake the election of new lady members, but the reply was that up to now their Committee had not had this opportunity and they did not wish to change the procedure.

The Great War of 1914/1918 was taking its toll and little golf was being played from 1916 onwards. It is worth recording that no A.G.M. took place in 1917. By June 1919 it was agreed to start having monthly medals once more and to have a Captain's Prize Day but no other golf was arranged. In 1920 the ladies agreed to write to "The Gentlewoman" and "Ladies Field" asking them to publish the fact that Disley Golf Club had made a new rule which did not allow ladies to play on the Course on Saturday afternoons between 1p.m. to 4p.m. and on Sunday morning before 11 a.m. (Note - this rule is still in existence in 1989.) In 1921 the Club Committee offered the Ladies Section a supply of silver spoons for medal winners at the cost price of 9/0d each (45 pence) - the reply was that they might accept the offer at some future date. (Note - the same spoons in 1989 cost the Men's Committee £33 each).

In 1922/23 there were far more monthly meetings held but finances were not improving as a result. The Men's Committee was asked to provide £2.2.0d to pay the E.L.G.U. annual subscription and the ladies withdrew from the Manchester Ladies Golf Association because they were being pressed for the subscription of 10/6d (52 .5 pence). It is also interesting to note that by this time the Ladies on the Section Committee were new members - in other words all the founder members of 1895 had now departed from the scene! At this juncture, it should be mentioned that the Disley Ladies owe a great debt of gratitude to the Misses E.J. and AC. Murray. Without these two stalwarts the ladies of Disley would not have the long history of playing golf on this scenic and delightful course. You have only to look at the records and it will be seen that both of them were Lady Captains, Secretaries & Treasurers for several years and they effectively kept the Ladies alive!

In October 1923 a letter was sent to the Men's Committee asking them to provide more locker space as the ladies were inconvenienced by not having enough lockers. In 1925 the new Lady Treasurer (Mrs. Amy Sidebottom) proposed and got agreement to send the Men's Committee £5 towards the cost of the Course alteration which was a heavy expense for the Club at that time. This gift was gratefully acknowledged! At the next meeting, the ladies wrote to the Men's Committee absolutely declining to hand over the funds available in their Bank Account. It would appear the previous kind action of the ladies was not appreciated by the men!

In 1928 there was a sudden departure of four ladies from the Section Committee owing to a resignation 'en bloc'. No details are given for this decision, but it left the Lady Captain, Treasurer & Secretary to run the Section. Although regular meetings were held in the next few years, there were few changes in the number of ladies attending meetings. Certainly the section officers must have been capable women and mentions must be made here of Mrs. T.N. (Amy) Sidebottom who was Lady Treasurer from 1925 to 1937 (with a Captaincy in the middle of this period). There is no doubt she was the 'anchor' woman of the Section - attending all the section meetings from 1922 to 1937. Another debt of gratitude to this woman. The years from 1929 to 1937 were the years of 'depression' and it is obvious the Ladies Section, like the Club, barely managed to exist during these years. (Note - in 1934 the Captain's Day for the ladies had to be cancelled because of the small number of entrants).

The Second World War came in late 1939 and there is no mention of any committee meeting after that of 20th March 1940. The Section just 'went to sleep' until the next Meeting held on the 27th May, 1942, when all present were 'new' names. Some of the new ladies committee after the reformation of the committee from 1942 to 1945 performed sterling feats for Disley Ladies golf and we must refer to Miss F. Boothby and Miss P. Ashby in this connection. Their work over many years meant that the Ladies Section had a sound re-birth and it is due to them that the Section is thriving and prosperous today.

From about 1948 onwards the Section grew in numbers but it was in the early sixties, when ordinary people began to see a greater prosperity in their lives, when more money and more leisure time became available that ladies golf in Disley (like the men) began to 'take off', with the result that in 1989 the section had approx 120 ladies playing golf regularly and playing it well!

There is no doubt also that the advent of television coverage of the game got ordinary people interested in playing the game. Up to 1948 or even later, golf was a game for the moneyed and professional classes. After that era it was available for all the people who were prepared to pay the necessary fees. So concludes nearly 100 years of golf for the ladies of Disley Golf Club - may the ladies at the end of the next 100 years be as happy as we are today.



## CHAPTER 8

### INTO THE SECOND CENTURY

(The next 25 years)

The Club's Centenary Celebrations in 1989 were marked with a number of events which included a Dinner - not on the scale of the 1890's, a nine hole competition in 1890's dress using hickory shafted clubs, but stopped short of playing the 19th hole (from the old clubhouse to the door of The Rams Head) and a number of matches against other clubs also celebrating their Centenaries (Royal Birkdale, Wilmslow and Macclesfield). Unfortunately only the Macclesfield match survives but this is still played under the 1890 format of holes up at the end of 18 holes.



The second century started with the death of Eva Parker. Eva & Neville Parker had occupied Stanley Hall for 65 out of the 70 years of the club's ownership and it has presented the Club with a problem - what to do with it? Despite various committees, numerous proposals and many E.G.M.s to date, Stanley Hall remained unresolved for many years. The club finally obtained planning permission for Change of Use, and it was finally sold in August 2014.

Just as significant but with a greater knock-on effect was the retirement of the last Honorary Secretary & Treasurer. For 105 years the two officers had dealt with all the day to day running of the club without any remuneration except Neville Parker lived at Stanley Hall virtually rent free and the Treasurer was either an Honorary or Life member for much of the time. For some years there had been a reluctance for members to involve themselves in club affairs and this came to a head in 1994 when nobody was prepared to take on the roll of Secretary or Treasurer. This was due in part to the time and commitment required, but also due to the ever increasing legislation - most of it emanating from Brussels. The directors therefore decided that the club needed a part time (20 hours) paid secretary. Within a short time this became a full time post and the club has now appointed a full time manager.

In 1997 the committee structure was changed. Up to then the Club committee had been made up of 12 Directors (including honorary secretary and treasurer) with the Captain as Chairman. The new structure consisted of 5 Directors including a chairman, all elected for three years, to run the Greens, House and Financial (e.g. Limited Company). The Captain's role was to chair the competitions and social committees (e.g. non limited company activities). The idea behind the changes was to create more continuity in the running of the club, to give the Captain more time to enjoy his year in office, and to cover the reluctance of members to assume office. Whether the change has succeeded is open to debate.

When the club's first centenary closed, half of the fairway at the 17th had been leveled. This has proved a great improvement. This was however the first of a number of disruptions to the course. In the last 20 years the local Water Company have seen fit to put new pipelines along the side of Stanley Farm Woods (across the front of the 2nd green and the 5th tees and the side of the 4th green) and across the 10th, 11th and 12th holes, in addition heavy plant had to be brought across the course for the construction of the "New Holes" (more of this later).

The consequence of all these disruptions is that drains are affected or broken, the top soil lost and turf that had been nurtured for over 100 years has had to be recultivated.



Pipeline across the second fairway, with the second green beyond

The disruptions to the course are nothing to the saga of the "New Holes". In 1996 the club were able to purchase a piece of land to the right of the 4th tee, the first addition to the course land since 1921. This was done mainly with an interest free loan from the R & A. (The R & A had published a report in 1985 which concluded that 1500 new golf courses were required throughout the country to accommodate everyone who wanted to play golf and they were happy to make funds available for development). An architect was employed to draw up plans to utilise the new land and improve the course. The plans which were put forward were for three new holes to be built on the new land and for the course to be altered to incorporate them. The problem was that the overall cost excluded the project going forward all at once. So it was decided to build the new holes and alter the rest of the course as money became available. In the meantime various proposals for eliminating three holes on the old course would be considered. Unfortunately when the proposals were put to the members at an E.G.M., it split the club almost in half. First of all there were accusations of a hidden agenda in that the overall plans were not published (due to the feeling that they would be rejected out of hand) and when the plans for the three holes were passed by a small margin (mainly due to the proxy votes) there were further accusations of vote rigging. N.B. by law all shareholders are allowed a vote and may appoint a proxy to vote for them. So the three new holes were built but that was not the end of the saga. Partly because of poor design and partly because there was so much uncertainty about what course we would be playing at any time many members even those who had been in favour of the project became disillusioned and when a proposal was put to the members that the holes should be taken out of competitive use it was passed. Thus ending the saga of the New Holes.

Unfortunately the effect of this episode are still being felt. Due to the downturn in demand for golf and the competition from the Golf and Country Club complexes, the cost of building the new holes has never been recovered and resulted in a downward spiral in the club finances. The land has now been sold.

We now turn to the Clubhouse. There have been two major changes. The first started with a report from a structural engineer that the terrace embankment at the back of the Clubhouse was putting too much pressure on the outside wall and could cause the floor to eventually to collapse. The only decision that could be made was to remove the terrace and because the patio windows would be 20 feet above ground, to build a balcony. As an extra precaution Acro Props were installed in the cellar to reinforce the floor. These have now been removed because the club has been advised there is now no danger of collapse!!

The current Clubhouse was built with a separate men's lounge and snooker facility, with the bar dividing the men's lounge from the general lounge. A major change was turning the bar by 90 degrees. This meant we effectively had one bar for all members and has helped to integrate the club - in accordance with E U Directives - for the first time in 100 years.

The perennial problem of providing sustenance, both liquid and solid, for the members has caused much discussion over the years, and a number of schemes have been tried. The problem is finding the right balance in the changing world of Drink Driving, Smoking Bans, Employment Law and Health and Safety to name but a few! Consequently the Bar and Catering still makes a loss.



In a final comment on the Clubhouse, the club has lost its most productive member. Due to increased rental, tax and lack of use, the club has dispensed with its Fruit machine. In 1989 the profit on the Fruit Machine was £10,937 while the subscription income amounted to £96,295.



Constructing the replacement hut at the 9<sup>th</sup> green

Built by David Ward, Captain 1993, President 2014

But what of the Golf! The last 25 years has probably been the most successful in the Club's history, both in team and individual events. The men's teams won the Dunham Trophy (The Manchester & District Alliance Team Event) in 1999 and lost in the final and semi-final on two other occasions. The Ladies won the Bell Cup (The Ladies Equivalent of The Dunham Trophy) in 2006 and a mixed team won the Archie Preston Trophy in 2010. The Juniors have won The Derbyshire & Cheshire Scratch League in 6 consecutive years while the men won the D & C League on a number of occasions.



Winners of Dunham Trophy 1999

From left to right: Neil O'Brien, Andrew Esplin (professional), Richard Yeomans, Chris Holtom, Steve Kewley, Tony Collinson, Phil Housley

Individually James McCormick won the Cheshire Championship in 2012 and lost in a play off in 2013 while Tom Christie finished runner up in the Junior County Championship in 2012 (equaling the Delamere Forest course record in the process). Also after 114 years, The Balfour Trophy (see chapter 3) was won by Steve

Misell for the first time by a Disley member, but probably the most consistent golfer over the last 25 years has been Phil Leadbetter. He has won The Hodgkinson Foundation Gold Medal (for the 4 best gross scores) a total of 17 times - 14 consecutively.

What of the future? Who can say? 25 years ago when the club had a waiting list for members, competitions were oversubscribed and the Club's finances were healthy, nobody could foresee the decline in participation in golf (membership of golf clubs has reduced by 15% in the last 8 years) and the inevitable effect on the finances. While Disley still remains a delightful place to play golf, the Club will have to evolve to meet the changing lifestyles and expectations of future golfers.

What is predictable is that we will never again hold a competition that attracts all the best professionals in the country including the Open Champion. Nor will the Disley course be considered anything other than a pleasant place to spend a few hours away from the hurly burly of working life. It will never be a championship course nor will the members want it to be so, but if it gives as much pleasure in the next hundred years as it has in the past then it certainly has a future.

# **APPENDIX 1**

## **SUMMARY OF MAIN EVENTS**

1889	November 23 -	Preliminary meeting at Rams Head of the founding members
1889	December 4	Club Officially formed.
1890	May 17	1st Competition
	July 5	1st Match v Riley's G.C. of Alderley Edge.
1892	January	Ladies admitted as members.
1893		H.H. Hilton elected Life Member
1894		Course extended to 18 holes
1895	July 19	Professional event held
1895	July 22	1st Meeting of the Ladies Section
1897	April 3	1st Club House Opened
		Commencement of digging Disley tunnel.
1902		Disley Railway Tunnel Opened.
1914		Proposed extension of the Course to the Club House agreed, but never implemented due to War.
1918		Old 8th and 13th holes ploughed up
1920		Stanley Hall Farm purchased. Formation of Limited Company.
1921		Notice given to Wild. Reconstruction of the course commenced. First sales of building land.
1924		First proposal for a Club House on the course.
1927		Course reconstruction complete.
1934		Final Sales of building land. Club House extended.
1934		James Braid consulted on course improvements.
1938		Final grazing contract terminated.
1942		Old 5th and 6th holes ploughed up.
1946		Course restored to 18 holes.
1962		Extension to Club House agreed rather than build a new Club House on the course.
1979		Old 4th and 5th holes altered.
1979		New Club House on the course opened and holes renumbered.
1989		Club's Centenary celebrations
1992		Balcony opened
1996		Land purchased to right of 4 <sup>th</sup> tee
1997		Bar turned through 90 degrees
2001		New holes opened
2003		New holes closed
2013		Land sold to right of 4 <sup>th</sup> tee
2014		Club's 125 <sup>th</sup> anniversary celebrations; Stanley Hall is sold

## APPENDIX II

### LIFE MEMBERS

#### DATE ELECTED

1890	Dr. A. Hodgkinson	Founding member and first Captain. Presented Hodgkinson Foundation Gold Medal.
1890	W. Bell	Founding. member and Captain 1892. Served on Committee for 17 years between 1889 and 1908, and a further 5 years as the club auditor. He won the Hodgkinson Foundation Gold Medal four times and Summer Scratch Medal three times.
1890	J.A. Hutton	Founding member and Captain in 1894. Secretary 1889 to 1893 and served for 7 years on the committee in total.
1890	H.C. Garrett	Founder member and Captain in 1893. Served for 13 years between 1889 and 1904.
1893	Rev. J.H. Bourne	Joined 1889. Served on committee 1892.
1894	H.H. Hilton	Open Champion 1892 and 1897 Amateur Champion 1900 and 1902.
1906	J. Murray	Founder member and Captain in 1895. Treasurer 1889 to 1894 and 1896 to 1901. Auditor 1902 to 1906.
1906	Mrs. J. Murray	Joined 1892 (Founder Lady Member). Lady Captain 1896.
1913	P. Campbell	Joined 1890. Captain 1900. Served on committee for 4 years
1913	G.H. Norris	Founder member and Captain in 1908. Served 5 years on committee. Presented 2 trophies to the club, 1 to the Ladies and 1 to the Gentlemen in 1909. The Men's Norris Cup is now played for at the Autumn Meeting.
1913	Mrs. G.H. Norris	Joined the club in 1900. Lady Captain in 1911.
1920	R.J. Kerr	Joined the club in 1900.
1920	R.E. Branthwaite	Joined the club in 1893. Captain 1901 and 1915. Served on committee for 20 years between 1895 and 1919.
1921	A. N. Monkhouse	Founder member and Captain in 1912. Served on committee for 6 years. Won the Hodgkinson Foundation Gold Medal four times and the Summer Scratch Medal three times.
1921	Miss A.C. Murray	Joined the club in 1892 as a founder Lady member. Lady Captain 1899, 1908 and 1909. For many years a member of the Ladies Committee.
1922	Miss E.J. Murray	Joined the club in 1892 as a founder Lady member. Lady Captain 1898 and 1915 to 1920. For many years a member of the Ladies committee.
1924	R.P. Horsley	Joined the club in 1894. Captain in 1906 and Secretary 1902 to 1905. Served on committee for 12 years in all.
1926	C.G. Satterthwaite	Joined the club in 1890. Served on committee in 1902 and as Auditor for 5. years. Won the Hodgkinson Foundation Gold Medal seven times and the Summer Scratch Medal five times. He won many other prizes including the Garrett Cup outright in 1913. This was represented to the club in 1982 as the Satterthwaite Spring Cup.
1930	F.S. Leedham	Joined the club in 1899. Captain 1905 and 1916. Secretary 1909 to 1913. Served on committee between 1903 and 1919.
1931	A.S. Warman	Joined the club in 1901
1934	J.M. Lees	Joined the club in 1903. Captain 1913 and 1927. Treasurer 1909 to 1911. Served total of 11 years on committee between 1908 and 1927.
1936	Mrs. E.D. Monkhouse	Joined the club in 1903. Lady Captain 1907.
1938	W. Gledhill	Joined the club in 1912. Captain 1922, 1930 and 1931. Served on committee for 18 years between 1917 and 1937.
1939	Mrs. W. Gledhill	Joined the club in 1912. Lady Captain 1929.
1939	G. Carter	Joined the club in 1919. Captain 1924. Served on committee continuously from 1922 to 1944.

1941	J.H. Sidebottom	Joined the club in 1912. Served 2 years on committee. Won Hodgkinson Foundation Gold Medal three times and Summer Scratch Medal six times. He also set a course record in 1913 of 67.
1944	R.B. Kerfoot	Joined the club in 1921. Treasurer for 20 years from 1923 to 1942.
1945	V. Walker	Joined the club in 1934. Captain 1940 to 1945. President 1948. Served a total of 9 years on committee.
1947	A. Statham	Joined the club 1922. Captain 1928 and 1929. President 1939 to 1947. Served a total of 8 years on committee.
1947	L. Yates	Joined the club in 1919. Captain 1937. President 1951. Served 16 years on committee between 1922 and 1941.
1947	Mrs. M.B. Simpson	Joined the club in 1919. Lady Captain 1921 and 1922.
1949	E. Elstub	Joined the club in 1919. Captain 1936. Served 3 years on committee.
1950	G. Benson, M.P.	Joined the club in 1920. Captain 1934 and 1935. Served 9 years on committee between 1929 and 1937. Knighted 1958.
1950	Mrs. A. Sidebottom	Joined the club in 1915. Lady Captain 1924.
1952	J.W. Westray	Joined the club in 1920. President 1949
1953	F. Stringer	Joined the club 1914. Captain 1923. Served on committee 16 years from 1916 to 1931.
1953	T.N. Sidebottom	Joined the club in 1915. Served committee 12 year between 1935 to 1946. Won Hodgkinson Foundation Gold Medal 1924. Played for the County on a number of occasions.
1953	S. Lomas	Joined the club 1919.
1953	N. Parker	Elected 1st class caddy 1911. Joined the club 1922 took tenancy of Stanley Hall 1925. Secretary 50 years from 1928 to 1977. Captain 1960.
1955	Mrs. G. Nixon	Joined the club in 1924. Lady Captain 1932.
1955	Mrs. N. Yates	Joined the club 1927. Lady Captain 1934.
1957	L.I. Sidebottom	Joined the club 1912. Captain 1939. Served on committee 39 years from 1922 to 1960. Won Cheshire Championship and Midlands Counties Championship 1923. Runner-up for Cheshire Championship three times and twice semi-finalist in English Amateur Championship. Won the Hodgkinson Foundation Gold Medal twelve times and the Summer Scratch Medal twelve times.
1960	J.W. Duck	Joined the club 1938. Captain 1952. President 1957. Served on committee 4 years.
1961	H. Taggart	Joined the club 1935. Served on committee 11 years 1939 to 1949.
1964	G.S. Armstrong	Joined the club in 1920. Captain 1946. President 1959. Served on the committee for a total of 12 years between 1924 and 1954.
1965	Miss R.M. Quayle	Joined the club in 1927. Lady Captain 1946.
1965	Miss P. Ashby	Joined the club in 1938. Lady Captain 1945.
1969	J. Gore	Joined the club in 1936. Captain 1950. President 1962. Served a total of 9 years on committee between 1942 and 1952.
1969	W.H. Jones	Joined the club in 1943. President 1960.
1969	H. Read	Joined the club in 1936. President 1950
1969	Miss A. Boardman	Joined the club in 1947. Lady Captain 1954.
1974	C.E. Swann	Joined the Club in 1940. Captain 1948. President 1956.
1974	J.R. Gollings	Joined the club in 1945. Captain 1953. President 1964. Served 6 years on committee between 1950 and 1955.
1974	G.H. Turner	Joined the club in 1942. President 1963. Served 3 years on committee.
1974	Mrs. E.V. Parker	Joined the club in 1947. Lady Captain 1964. Wife of N. Parker (Secretary for 50 years).

1975	E.J. Walker	Joined the club in 1941. Served 6 years on committee as Assistant Secretary 1942 and 1947.
1975	W. Storah	Joined the club in 1942. Served a total of 12 years on committee between 1944 and 1966.
1975	R.V. Stevenson	Joined the club in 1948. Captain 1963. President 1969. Served 3 years on committee.
1975	C.S. Riley	Joined the club in 1948. Captain 1965. President 1973. Served 12 years on committee.
1976	Mrs. S. Swindells	Joined the club in 1943. Lady Captain 1956.
1976	Mrs. N. Turner	Joined the club in 1946. Lady Captain 1951.
1978	Mrs. A. Jackson	Joined the club in 1948. Lady Captain 1972.
1978	Mrs. E. Moffatt	Joined the club in 1946. Lady Captain 1955.
1981	Mrs. H. Watson	Joined the club in 1944. Lady Captain 1959.
1983	E.B. Jackson	Joined the club in 1959. Captain 1967. President 1972. Served 6 years on committee between 1962 and 1967.
1985	F.W. Harrop	Joined the club in 1959. Captain 1973. President 1978. Served on committee 9 years from 1970.
1987	A.G. Hughes	Joined the club in 1962. Captain 1980. Served 6 years on committee.
1987	D.A. Thornley	Joined the club in 1965. President 1983. Treasurer since 1965. (The longest serving Treasurer in the Clubs history).
1987	Mrs. M. Kay	Joined the club in 1956. Lady Captain 1967.
1989	E. T. Roberts	Joined the Club in 1968. Captain 1974. President 1984. Served on committee for 6 years.
1989	N. Potter	Joined the Club in 1956. Captain 1970. President 1975. Captain of the Manchester and District Captains Society 1987. Served on committee for 6 years.
1990	J. A. Lomas	Joined the club in 1969. Captain 1982 Secretary 1984 to 1990
1991	P.W. Goodchild	Joined the club in 1959 Captain 1984 President 1988
	Mrs. Jones	Joined the club in 1962 Lady Captain 1974
1995	J. Pangburn	Joined the club in 1959 Captain 1968 President 1979
1996	F. Booth	Joined the club in 1969 Captain 1977 President 1987
1999	Mrs M. Jackson	Joined the club in 1959 Lady Captain 1972
	Mrs K. Lomas	Joined the club in 1968 Lady Captain in 1977
	Mrs M. Myerscough	Joined the club in 1967 Lady Captain 1983
	L. Schofield	Joined the club in 1968 President 1981
	J.D. Stimfig	Joined the club in 1949
2001	S.R. Lee	Joined the club in 1951 President 1982
2004	R.A. Clayton	Joined the club in 1952 Captain 1994 President 1999, Secretary 1990 - 1993
2005	A. Hunstone	Joined the club in 1957 Captain 1983 & 1999 President 1989
2006	M.D. Ward	Joined the club in 1965 Captain 1993 President 2014
2009	G. Yeomans	Joined the club in 1960 President 1994 Treasurer 1990 - 1993 Played for Cheshire Colts. Past Chairman & President of Balfour & Houldsworth committee. Author of the history of Disley Golf Club.
2014	A.T. Booth	Joined the club in 1964. Runner up British Boys Championship 1953. First Chairman of the Club when the management was restructured in 1996.

It was decided by the Committee in 1974 that Life Members must be over 65 years of age. As this would have excluded certain members who had previously been elected to that position Honorary Members elected from 1974 onwards are listed below:-



1974	H. Morrison	Joined the Club in 1945. Captain 1956. President 1966. Service 9 years on Committee.
1974	Mrs. M. Morrison	Joined the Club in 1949. Lady Captain 1957.
1974	F.S. Yates	Joined the Club in 1945. Captain 1961. President 1968. Served 6 years on Committee.
1974	Mrs. A. Yates	Joined the Club in 1949. Lady Captain 1958.
1974	J. Henshall	Joined the Club in 1945. Captain 1954. President 1961. Presented the Henshall Trophy to the Juniors in 1961. Served 3 years on Committee.
1974	Mrs. H.L. Henshall	Joined 1945. Lady Captain 1958.
1974	W. Simpson	Joined the Club in 1944. Captain 1957. President 1965. Served 6 years on Committee.
1974	Mrs. M. Simpson	Joined the Club in 1947. Lady Captain 1953
1975	H. Lancashire	Joined the Club in 1941. Captain 1955. President 1967. Served 9 years on Committee.
1975	Miss. F. Boothby	Joined the Club in 1937. Lady Captain 1942/43.
1975	Mrs. M. Lancashire	Joined the Club in 1941. Lady Captain 1963.
1975	Mrs. M. Freeman	Joined the Club in 1944. Lady Captain 1960.
1975	Mrs. H. Marsden	Joined the Club in 1953. Lady Captain 1965.
1975	J. Freeman	Joined the Club in 1944. Captain 1959. Served 6 years on Committee.
1979	Mrs. F. Langley	Joined the Club in 1944. Lady Captain 1950.
1979	F. Langley	Joined the Club in 1944. Served 6 years on Committee.
1985	R.A. Jones.	Joined the Club in 1963. Served 6 years on Committee.
1989	L.D. Clayton	Joined the Club in 1949. Won the Hodgkinson Gold Medal six times and Summer Scratch Medal six times. Played for Cheshire on a number of occasions. Served on Committee for 3 years.
1990	M.R. Cooper	Joined the club 1927
	B. Hunstone	Joined the club 1958
1994	J. Standrin	Joined the club 1963 Captain 1972
	C. W. Shaw	Joined the club 1962
	R. C. Goodchild	Joined the club 1970
2002	Mrs M. Sidlow	Joined the club 1973 Lady Captain 1988
2005	K. Bleakley	Joined the club 1976 Captain 1989
2010	A. Esplin	Club Professional 1972 – 2010
	Mrs J. Esplin	Joined the club 1972

**PRESIDENTS**

<b>1889-1942</b>	Lord Newton	<b>1981</b>	L. Schofield
<b>1942-1947</b>	A. Statham	<b>1982</b>	S.R. Lee
<b>1948</b>	V. Walker	<b>1983</b>	D.A. Thornley
<b>1948</b>	J.D. Westray	<b>1984</b>	E.T. Roberts
<b>1950</b>	H. Read	<b>1985</b>	E.A. Reynolds
<b>1951</b>	L. Yates	<b>1986</b>	G.V. Wolf
<b>1952</b>	I. Hurst	<b>1987</b>	F. Booth
<b>1953</b>	H. Blake	<b>1988</b>	P.W. Goodricke
<b>1954</b>	W.H. Swain	<b>1989</b>	A. Hunstone
<b>1955</b>	J. Wolstenholme	<b>1990</b>	R. Bradbury
<b>1956</b>	C.E. Swann	<b>1991</b>	H. Resnick
<b>1957</b>	J.W. Duck	<b>1992</b>	R. Sidlow
<b>1958</b>	H. Yates	<b>1993</b>	R. Wilde
<b>1959</b>	G.S. Armstrong	<b>1994</b>	G. Yeomans
<b>1960</b>	W.H. Jones	<b>1995</b>	J. Cottrell
<b>1961</b>	J. Henshall	<b>1996</b>	M. Parker
<b>1962</b>	J. Gore	<b>1997</b>	W.T. Purcell
<b>1963</b>	G.H. Turner	<b>1998</b>	G.A. Downs
<b>1964</b>	J.R. Gollings	<b>1999</b>	R.A. Clayton
<b>1965</b>	W. Simpson	<b>2000</b>	R.H. Goodchild
<b>1966</b>	H. Morrison	<b>2001</b>	K.M. Roberts
<b>1967</b>	H. Lancashire	<b>2002</b>	R.J. Wallace
<b>1968</b>	F.S. Yates	<b>2003</b>	J.F. Oldham
<b>1969</b>	R.V. Stevenson	<b>2004</b>	A.R. Baird
<b>1970</b>	R.E. Mortimer	<b>2005</b>	M.J. Wiggins
<b>1971</b>	C.S. Riley	<b>2006</b>	J.E. Commins
<b>1972</b>	E.B. Jackson	<b>2007</b>	D.F. Clarke
<b>1973</b>	J. Marsden	<b>2008</b>	M.J. Wright
<b>1974</b>	J.H.M. Patterson	<b>2009</b>	D.N. Bradbury
<b>1975</b>	N. Potter	<b>2010</b>	L.N. Davidson
<b>1976</b>	J.P. Hawley	<b>2011</b>	J. Aitchison
<b>1977</b>	C. Hind	<b>2012</b>	J.D. Booth
<b>1978</b>	F.W. Harrop	<b>2013</b>	J.Smedley
<b>1979</b>	J. Pangburn	<b>2014</b>	M.D. Ward
<b>1980</b>	W.E. Jones		

## APPENDIX IV

### CAPTAINS

<b>1889-1891</b>	Dr. A. Hodgkinson	<b>1937</b>	L. Yates	<b>1981</b>	J.M. Rodger
<b>1892</b>	W. Bell	<b>1938</b>	W.H. Bates	<b>1982</b>	J.A. Lomas
<b>1893</b>	H.C. Garrett	<b>1939</b>	L.I. Sidebottom	<b>1983</b>	A. Hunstone
<b>1894</b>	J.A. Hutton	<b>1940</b>	V. Walker	<b>1984</b>	P.W. Goodricke
<b>1895</b>	J. Murray	<b>1941-1945</b>	V. Walker	<b>1985</b>	W.E. Flinn
<b>1896</b>	H.D. Tonge	<b>1946</b>	G.S. Armstrong	<b>1986</b>	R. Bradbury
<b>1897</b>	R.W. Hutton	<b>1947</b>	H. Blake	<b>1987</b>	R.H. Goodchild
<b>1898</b>	J.E. Mills	<b>1948</b>	C.E. Swann	<b>1988</b>	F.P. Thompson
<b>1899</b>	G.F. Schofield	<b>1948</b>	J. Wolstenholme	<b>1989</b>	K. Bleakley
<b>1900</b>	P. Campbell	<b>1950</b>	J. Gore	<b>1990</b>	K.M. Roberts
<b>1901</b>	R.E. Braithwaite	<b>1951</b>	J. Majdalany	<b>1991</b>	G.A. Downs
<b>1902</b>	G.E. Fletcher	<b>1952</b>	J.W. Duck	<b>1992</b>	J.L. Wilkinson
<b>1903</b>	H. Hawkins	<b>1953</b>	J.R. Gollings	<b>1993</b>	M.D. Ward
<b>1904</b>	Lord Newton	<b>1954</b>	J. Henshall	<b>1994</b>	R.A. Clayton
<b>1905</b>	F.S. Leedham	<b>1955</b>	H. Lancashire	<b>1995</b>	J.B. Peacock
<b>1906</b>	R.P. Horsley	<b>1956</b>	H. Morrison	<b>1996</b>	R.C. Booth
<b>1907</b>	A.H. Mayne	<b>1957</b>	W. Simpson	<b>1997</b>	J. Stockley
<b>1908</b>	G.A. Norris	<b>1958</b>	F.S. Yates	<b>1998</b>	C. Jenkinson
<b>1909</b>	A.H. Montgomery	<b>1959</b>	J. Freeman	<b>1999</b>	A. Hunstone
<b>1910</b>	E. Beswick	<b>1960</b>	N. Parker	<b>2000</b>	D.F. Clarke
<b>1911</b>	W. Scott	<b>1961</b>	J.E. Jones	<b>2001</b>	M.J. Wiggins
<b>1912</b>	A.N. Monkhouse	<b>1962</b>	A. Tonge	<b>2002</b>	S. Seales
<b>1913</b>	J.M. Lees	<b>1963</b>	R.V. Stevenson	<b>2003</b>	B.J. McNulty
<b>1914</b>	G. Jennison	<b>1964</b>	C.S. Riley	<b>2004</b>	J.E. Toner
<b>1915</b>	R.E. Braithwaite	<b>1965</b>	J. Marsden	<b>2005</b>	R. Banks
<b>1916</b>	F.S. Leedham	<b>1966</b>	R.F. Clarke	<b>2006</b>	M. Bircham
<b>1917-1918</b>	J.B. Wilson	<b>1967</b>	E.B. Jackson	<b>2007</b>	C. Nesbitt
<b>1919</b>	G. Jennison	<b>1968</b>	J. Pangburn	<b>2008</b>	J. Aitchison
<b>1920-1921</b>	J. Entwistle	<b>1969</b>	J.H.M. Patterson	<b>2009</b>	P. McCormick
<b>1922</b>	W. Gledhill	<b>1970</b>	N. Potter	<b>2010</b>	S. Kewley
<b>1923</b>	F. Stringer	<b>1971</b>	H.W. Humphries	<b>2011</b>	S. Misell
<b>1924</b>	G. Carter	<b>1972</b>	J.D. Standrin	<b>2012</b>	J.D. Pengelly
<b>1925</b>	G.H. Gastall	<b>1973</b>	F.W. Harrop	<b>2013</b>	D.N. Bradbury
<b>1926</b>	Sir W. Barton	<b>1974</b>	E.T. Roberts	<b>2014</b>	N.T. O'Brien
<b>1927</b>	J.M. Lees	<b>1975</b>	C.E. Woof		
<b>1928-1929</b>	A. Statham	<b>1976</b>	N. Peck		
<b>1930-1931</b>	W. Gledhill	<b>1977</b>	F. Booth		
<b>1932-1933</b>	J.D. McGonigal	<b>1978</b>	J.C. Andrews		
<b>1934-1935</b>	G. Benson	<b>1979</b>	E. Houlbrooke		
<b>1936</b>	E. Elstub	<b>1980</b>	A.G. Hughes		

# APPENDIX V

## LADY CAPTAINS

<b>1895</b>	Mrs. A.H. Mayne	<b>1945</b>	Miss P. Ashby	<b>1991</b>	Mrs. S.K Bradbury
<b>1896</b>	Mrs. J. Murray	<b>1946</b>	Miss R.M. Quayle	<b>1992</b>	Mrs. P.A. Booth
<b>1897</b>	Miss M. Withington	<b>1947</b>	Mrs. P.N. Dobson	<b>1993</b>	Mrs. J. Wilkinson
<b>1898</b>	Miss E.J. Murray	<b>1948</b>	Miss M.G. Parker	<b>1994</b>	Mrs. V.G. Hudson
<b>1899</b>	Miss A.C. Murray	<b>1949</b>	Miss H. Swindells	<b>1995</b>	Mrs. M. Purcell
<b>1900</b>	Mrs. G. Ruddy	<b>1950</b>	Mrs F. Langley	<b>1996</b>	Mrs. S. Commins
<b>1901</b>	Miss M. Bennett	<b>1951</b>	Mrs. G.H. Turner	<b>1997</b>	Mrs. C. Dawson
<b>1902-1903</b>	Mrs H.D. Tonge	<b>1952</b>	Mrs A. Copeland	<b>1998</b>	Mrs. D. Tomlinson
<b>1904</b>	Miss S. Bowden	<b>1953</b>	Mrs. W. Simpson	<b>1999</b>	Mrs. P.M. Yeomans
<b>1905</b>	Miss M.E. Hague	<b>1954</b>	Miss A. Boardman	<b>2000</b>	Mrs. D. Thompson
<b>1906</b>	Mrs. C.F. Johnson	<b>1955</b>	Mrs C. Moffitt	<b>2001</b>	Mrs. J.M. Wiggins
<b>1907</b>	Mrs. A. Monkhouse	<b>1956</b>	Mrs. C.W. Swindells	<b>2002</b>	Mrs. D.G. Long
<b>1908-1909</b>	Miss A.C. Murray	<b>1957</b>	Mrs. H. Morrison	<b>2003</b>	Mrs. D.G. Long
<b>1910</b>	Mrs. W. Scott	<b>1958</b>	Mrs. J. Henshall	<b>2004</b>	Mrs. A.J. Wright
<b>1911</b>	Mrs. G.H. Norris	<b>1959</b>	Mrs. R.K. Watson	<b>2005</b>	Mrs. J. Bircham
<b>1912</b>	Mrs. R.A. Murray	<b>1960</b>	Mrs. J. Freeman	<b>2006</b>	Mrs. B. Toner
<b>1913-1914</b>	Mrs. E.M. Baerlein	<b>1961</b>	Mrs. F.S. Yates	<b>2007</b>	Miss S.M. Allen
<b>1915</b>	Miss E.J. Murray	<b>1962</b>	Mrs. A.G. MacIntyre	<b>2008</b>	Mrs M.A. Clarke
<b>1916-1918</b>	Great War	<b>1963</b>	Mrs. H. Lancashire	<b>2009</b>	Mrs. A. McCormick
<b>1919-1920</b>	Miss E.J. Murray	<b>1964</b>	Mrs. N. Parker	<b>2010</b>	Mrs B.J. Williamson
<b>1921-1922</b>	Mrs. T. Simpson	<b>1965</b>	Mrs. J. .Marsden	<b>2011</b>	Mrs. J. Commins
<b>1923</b>	Mrs. S.P. Johnson	<b>1966</b>	Mrs H.E. Kendal	<b>2012</b>	Mrs. E.R. Griffith
<b>1924</b>	Mrs. T.N. Sidebottom	<b>1967</b>	Mrs. D. Kay	<b>2013</b>	Mrs. B. Aitchison
<b>1925</b>	Mrs. A. Leigh	<b>1968</b>	Mrs. G.H. Robinson	<b>2014</b>	Mrs. L. Pulley
<b>1926-1927</b>	Lady Barton	<b>1969</b>	Mrs. J. Pangburn		
<b>1928</b>	Mrs. F. Dean	<b>1970</b>	Mrs. T.G. Manning		
<b>1929</b>	Mrs. W. Gledhill	<b>1971</b>	Miss M. Oldfield		
<b>1930</b>	Mrs A. Leigh	<b>1972</b>	Mrs. E.B. Jackson		
<b>1931</b>	Mrs W. Nixon	<b>1973</b>	Mrs. K. Hughes		
<b>1933</b>	Mrs. L. Yates	<b>1974</b>	Mrs. P. Jones		
<b>1935</b>	Mrs. W. Gledhill	<b>1975</b>	Mrs. A.L. Wilson		
<b>1936</b>	Mrs. F. Caldecott	<b>1976</b>	Mrs. E. Pennington		
<b>1937</b>	Mrs. A. Parker	<b>1977</b>	Mrs. J.A. Lomas		
<b>1936-1939</b>	Mrs. S. Yates	<b>1978</b>	Mrs. L. Schofield		
<b>1940-1941</b>	No Captain- War	<b>1979</b>	Mrs. A.G. Hughes		
<b>1942-1943</b>	Miss. F. Boothby	<b>1980</b>	Mrs. W.E. Flynn		
<b>1944</b>	Mrs. G.E. Morrison	<b>1981</b>	Mrs. J.M. Rodger		
		<b>1982</b>	Mrs. J. .Lee		
		<b>1983</b>	Mrs. M. Myerscough		
		<b>1984</b>	Mrs. T.H. Redfern		
		<b>1985</b>	Mrs. S.L. Thornley		
		<b>1986</b>	Mrs. P. Booth		
		<b>1987</b>	Mrs. J.A. Penson		
		<b>1988</b>	Mrs. M. Sidlow		
		<b>1989</b>	Mrs. N. Woodall		
		<b>1990</b>	Mrs. B. Sellers		

## **APPENDIX VI**

### **HONORARY SECRETARIES**

<b>1889-1893</b>	JA. Hutton	<b>1919-1921</b>	S.P. Johnson
<b>1894-1896</b>	R.W. Hutton	<b>1922-1923</b>	L.C. Brittlebank
<b>1897</b>	H.D. Tonge	<b>1924-1927</b>	S.P. Johnson
<b>1898-1901</b>	R.W. Hutton	<b>1928-1977</b>	N. Parker
<b>1902-1905</b>	R.P. Horsley	<b>1977-1979</b>	G.W. Blacker
<b>1906</b>	E.W. Cowen	<b>1979-1984</b>	B.D. Ainsbury
<b>1907-1908</b>	P.J. Skelton	<b>1984-1989</b>	J.A. Lomas
<b>1909-1913</b>	F.S. Leedham	<b>1990-1993</b>	R.A. Clayton
<b>1914-1916</b>	J.B. Wilson		
<b>1917-1918</b>	J. Whittaker		

## **APPENDIX VII**

### **HONORARY TREASURERS**

<b>1889-1894</b>	J. Murray	<b>1915-1916</b>	G. Jennison
<b>1895</b>	H.D. Tonge	<b>1917-1923</b>	J. Entwistle
<b>1896-1901</b>	J. Murray	<b>1923-1942</b>	R.B. Kerfoot
<b>1902-1905</b>	H.D. Tonge	<b>1943-1959</b>	C.S. Bowers
<b>1906-1908</b>	A.N. Taylor	<b>1960-1965</b>	A. Taylor
<b>1909-1911</b>	J.M. Lees	<b>1966-1989</b>	D.A. Thornley
<b>1912-1914</b>	H. Hawkins	<b>1990-1993</b>	G. Yeomans

## **APPENDIX VIII**

### **CHAIRMEN**

1996-2002	A.T. Booth	2009-2012	M. Bircham
2002-2004	C. Jenkinson	2012-2014	D.F. Clarke
2004-2009	L. Davidson		

# APPENDIX IX

## MAJOR CLUB TROPHIES

Over the years the club has had many trophies. Unfortunately many have been lost to the club because the original conditions of presentation allowed them to be won outright by a member winning them for a second time. Three of these trophies were subsequently returned to the club. No trophy can now be won outright.

### MENS TROPHIES

#### **Hodgkinson Foundation Gold Medal**

Presented to the club in 1890 by one of the three founding members and the first Captain Dr. Alex Hodgkinson. The winner is the member returning the four lowest gross scores in medal competitions during the year.

#### **Hutton Shield (Singles Knock Out)**

Presented to the club in 1892 by Mr. R.W. Hutton, one of the founder members. The competition is singles match play and although it was first played for in 1891 for Mr. Hutton's prize the Shield was not played for initially until 1892.

Note: This was one of three match play competitions in the early years, the others were, however, won outright but the Hutton Shield can never be won outright.

#### **Disley Challenge Vase (Summer Meeting and President's Prize) Actually engraved as Summer Challenge Cup**

Presented to the club in 1893 to be played for at the Summer Meeting (the first Summer Meeting had been played for in 1892). The competition to be 36 holes and the Vase to be held for 12 months. The first competition for the Vase was notable for the presence of Mr. H.H. Hilton (the 1892 Open Champion) in the field. He had been elected a Life Member in the previous April. It is the only recorded instance of him playing in competition but his second 18 holes were completed in 74 strokes which set a new record for the course.

The Summer Meeting became the President's Prize in 1940.

#### **Summer Scratch Gold Medal (Summer Meeting - Best Gross)**

Presented by the club in 1895. The medal is won by the player returning the lowest gross score at the Summer Meeting. This was considered to be the Club Championship until 1971.

#### **Shanghai Vase**

Presented to the club in 1907 by three members (W.C. Murray, W.N. Symonds and J.R. Tweed) who had been on a business trip to Shanghai. The Chinese Inscription when translated sums up their view of playing golf at Disley and still holds good today:

"The daily toll is finished; books can be closed and offices locked up. Now is the time to forget worry and think of pleasure. Hence let us take leave of the smoky town and steal away to the distant hills, there to follow the winding streams and by pathways and byways seek out the scheduled spots revelling the while amid the fragrance of the refreshing countryside."

To qualify for the match play stage of the competition a player must win his division in one of the first four Summer Medals.

#### **Norris Cup (Autumn Meeting)**

Presented to the club by G.H. Norris and T.C. Norris in 1909 when G.H. Norris was Captain. Both were founder members of the club. The Cup was originally played for as a separate competition in its own right but in 1928 it was linked to the Autumn Meeting because previous trophies for this competition had been won outright.

#### **Eustace Hutton Flagon (Spring Meeting)**

Presented to the club by W.J. Hutton son of Eustace Hutton in 1951. This trophy was originally presented by the President (Lord Newton) in 1891 and played for at the Spring Meeting until won outright by Mr. Hutton in 1894. The Spring Meeting had various trophies associated with it which over the years up to 1952 had been won outright.

#### **Eustace Hutton Cup (Foursomes Knock-Out)**

Presented to the club by W.J. Hutton son of Eustace Hutton in 1951. This cup had been presented by H.C. Garrett in 1891; the winner to keep the Cup. Prior to 1948 the Captain had always provided the prize for the Foursomes Knock-Out; in that year a separate day was allocated to the Captain's Prize.

#### **Services Trophy 1939-45 - Fourball Medal**

Presented to the club by ex-servicemen who had taken part in the war. They were given free membership in 1946 as a small appreciation of their services. They, in turn, presented the Trophy to the Club.

### **Israel Sidebottom Trophy**

Presented to the club in 1958 by Mr. Harry Blake (Mr. Blake was an ex Captain and President of the club). The Trophy was to commemorate 50 years membership by Israel Sidebottom, 35 of which were as a committee member. He had been Captain in 1939 (the Golden Jubilee year) and was a Life Member. Israel was the club's leading golfer for many years, winning the Midlands Amateur Championship and the Cheshire Championship and had become something of a legend in his own lifetime.

### **T.N. Sidebottom Trophy**

Presented to the club in 1965 by Amy Sidebottom in memory of her husband, 'Norry' Sidebottom who had joined the club in 1915, served as a Director for 12 years and had been elected a Life Member in 1953. He played for the County on a number of occasions.

### **Satterthwaite Spring Cup**

Presented to the club by a descendant of C.G. Satterthwaite in 1982. The cup was originally the Garrett Cup presented to the Club by H.C. Garrett (a founder member) in 1909 to be played for at the Spring Meeting and won outright by C.G. Satterthwaite in 1913.

### **John Bullock Merit Trophy**

Presented to the club in 1970 by Mrs. Bullock in memory of her husband who died in 1963. Although John was not a prominent member at Disley, he had been a very good golfer playing in many parts of the world and the Trophy was won by him in India. The Trophy is presented to the most consistent golfer in the year, i.e. for the lowest eight net rounds in competitions.

### **Don Riley Trophy - Fourball Aggregate Stableford**

Presented to the club in 1987 in memory of C.S.(Don) Riley, past Captain and President of the Club and a Life Member who died in 1986.

### **Les Schofield Centenary Spring Cup**

The Centenary Spring Cup was originally introduced in the club's centenary year, 1989. The Cup was renamed in 2011 in recognition of the 100th birthday of Les Schofield. Les joined the club in 1968 and was President in 1981; he was elected a life member in 1999.

### **Ben Hunstone Millennium Trophy**

This was introduced in the year 2000, to celebrate the turning of the millennium. It was named after Ben Hunstone who joined the club in 1958; he was made an Honorary Member in 1990.

## **LADIES TROPHIES**

### **Shanghai Card Tray**

Presented to the Ladies Section two years before the men's Shanghai Vase, probably by the same members. The rules of the Competition are similar to those for the men's competition.

### **Norris Cup**

Presented to the Ladies Section in 1909, at the same time as the Men's Norris Cup, by G.H. Norris and T.C. Norris. It is understood that the combined cost of both trophies was £20.

### **Louis Munn's Trophy**

Purchased by the Ladies Section in 1960 in memory of Mrs. Louis Munn.

### **Amy Sidebottom Challenge Bowl**

Purchased by the Ladies Section in 1968 in memory of Amy Sidebottom, a member since 1915. She was the Lady Captain in 1924 and was made a life member in 1950.

### **Mildred Manning Trophy**

Presented to the Ladies Section in 1974 by T.G. Manning and the Ladies Section in memory of Mildred Manning, Lady Captain in 1970 and a member for many years.

### **Marjory Garner Trophy**

Presented to the Ladies Section in 1984 by S. Garner in memory of his wife Marjory who was a member for nearly 40 years. The Trophy is for senior ladies and should be played for as near the 17<sup>th</sup> May each year as possible. (This was the Garners' Wedding Anniversary).

### **Norah Woodall Centenary Trophy**

Presented to the club in 1989 and named after the Centenary Lady Captain.

### **Lady Captains Millennium Trophy**

Presented to the club in the year 2000 to celebrate the Millennium.

### **Norma Ellis Trophy**

Presented to the club in memory of Norma Ellis, a member for many years.

## **OTHER TROPHIES**

### **Walter Halliwell Trophy (Mixed Foursomes Knockout)**

Purchased by members and presented to the Club in 1965 in memory of Walter Halliwell, a member for almost 20 years (6 of which were spent on the Committee). He organised many informal Sunday afternoon mixed foursomes competitions (the forerunners of the present formal competitions).

### **Henshall Trophy (Juniors)**

Presented to the Club for competition by the juniors in 1961 by J. Henshall, Captain 1954 and President in 1961.

### **Thornley Trophy (Juniors)**

Presented to the Club for competition by the juniors in 1983 by D.A. Thornley, President in 1983 and Treasurer from 1966 to 1990.

## **PAST TROPHIES WON OUTRIGHT**

### **Annual Cup**

Presented to the Club in 1890 by J.A. Hutton, one of the founding members, to be played for at the Annual Meeting. Won outright in 1906 by F. Oldham. The Annual Meeting was played for prior to the AGM in January. The competition ceased during the First World War due to the frequent postponements because of the weather.

### **President's Cup**

Presented to the Club in 1891 by the President, Lord Newton, to be played for at the Spring Meeting. Won outright in 1894 by E. Hutton. This trophy was re-presented to the Club in 1951 and is again played for at the Spring Meeting.

### **Milne Bowl**

Presented to the Club in 1891 by J.D. Milne, a founder member of Cheadle Golf Club and a member of the family who owned Kendal Milne's Stores in Manchester. Won outright in 1894 by W. Bell

### **Bell Salver**

Presented to the Club in 1892 by W. Bell one of the founding members. This was played for at the Summer Meeting in 1892 and subsequently at the Autumn Meeting. Won outright in 1901 by R.C. Hutton.

### **Spring Cup**

Played for at the Spring Meeting from 1895. Won outright in 1907 by W.E.M. Mainprice.

### **Garrett Cup**

Presented to the Club in 1909 by H.C. Garrett a founder member to be played for at the Spring meeting. Won outright in 1913 by C.G. Satterthwaite and re-presented to the Club in 1982 and now competed for as the Satterthwaite Spring Cup.

### **Cameron Cup**

Presented to the Club in 1920 by C.N.W. Cameron to be played for at the Spring meeting. Won outright in 1928 by C.W.F. Booker.

### **Leedham Cup**

Presented to the Club in 1926 by F.S. Leedham, Captain in 1905 and 1916 to be played for at the Autumn Meeting. Won outright by J.H. Carline in 1927.



## APPENDIX X

### Provenance of the 1891 Summer Handicap Medal



Reverse of medal reads:

1891

SUMMER HANDICAP

won by

G.J.HUTTON

The institution of Disley Golf Club was created in December 1889, and the Opening Meeting of the Club was held on the 17 May 1890. The 1891 Summer Handicap Medal was therefore played for and won just one year later. G.J.Hutton is on record as having played in the Opening Meeting.

The club has the first competition book from which can be seen that 6 summer medals were played in 1891, and the winner of each qualified to play in the "Final Competition for the Summer Handicap Medal"; this was played for on 24<sup>th</sup> October 1891. There was a tie between G.J. Hutton and J.A. Hutton, with the former winning the play-off.

The whereabouts of the medal for the next century is unknown. How it returned to Disley is a curious coincidence.

Lawson (L.D.) Clayton joined Disley Golf Club in 1949. He won the Hodgkinson Gold Medal six times and Summer Scratch Medal six times. He played for Cheshire on a number of occasions. He served on Committee for 3 years and was made an Honorary Member of the Club in 1989, its centenary year.

Lawson's son Robert collected medals. Searching the internet auction web site, eBay, in 2005, he found the medal for sale and made a successful bid for it. He gave it to Lawson who presented it to Richard Banks, Captain 2005, on behalf of the club in May 2005.

# APPENDIX XII

## COURSE RECORD HOLDERS

### PROFESSIONAL AMATEUR

#### 1890 to 1893 COURSE

17 May 1890		110	Dr. A. Hodgkinson
19 July 1890		93	W. Bell
15 August 1890		90	W. Bell
16 July 1892		87	W. Bell
20 August 1892		80	R.W. Hutton
1 July. 1893		74	H.H. Hilton

#### 1894 to 1920 COURSE

April 1894		78	J. Ball Jnr.
19 June 1895	73	J.H. Taylor	
.	73	T. Vardon	
	73	D. Brown	
6 July 1895		74	T.G. Yates
August 1897	71	L. Gourley	
16 September 1899		70	C.S. Hoare
1903	69	J.S. Sidebottom	
1905	68	J. Batley	
1907	66	J. Batley	
1908	64	J.W. Gaudin	
17 September 1910		68	E.M. Baerlein
21 June 1913		67	J.H. Sidebottom

#### 1927 COURSE

30 June 1928		71	J.H. Carline (Twice)
29 September 1928		70	J.H. Carline
17 August. 1929		70	L.I. Sidebottom
26 August. 1933		69	J.H. Carline
30 June 1934		69	J.H. Carline (Twice)
7 May 1953		67	P.H.I. Sidebottom
24 September 1953		65	L.G.H. Copley

#### 1927 COURSE

15 August 1960		66	G. Armitt
2 June 1962	68	T. Fairbairn	
	68	E. Lester	

#### 1977 COURSE

20 June 1977	63	B. Charles	
15 September 1978	68	A. Peck	
30 June 1984	68	K. Bleakley	
4 May 1996	65	P.H. Leadbetter	
11 August 2001	64	P.H. Leadbetter	

27 May 2003

64 D. Middelow

26 June 2003

64 A. Worsley



### **GEOFFREY YEOMANS**

A member since 1960, has served on committee for three years. Represented the county on a number of occasions and has won the summer scratch medal three times. Ex-President of the Balfour and Houldsworth Committee.

### **Acknowledgements**

I would like to thank the following for their assistance in the preparation of this publication:

Mrs. E.V. Parker

B. Hunstone

C. E. Makepeace ( Disley Historical Society)

R. Frost (Lancs & Manchester Historical society)

Stockport Library

Lyme Park Information Centre

for providing information and photographs

My Family for their forbearance

John Lomas whose contributions to the Ladies Section were invaluable

Richard Banks for his technical support.