

12th Tee (391 yds.)



Holywell Golf Course

1924 - 1939

12th Fairway (391 yds.)

Holywell Golf Course Data 1924 - 1939			
Hole	Length	Stroke Index	Bogey
1	287	12	4
2	161	15	3
3	328	7	4
4	350	9	4
5	167	5	4
6	365	3	4
7	160	13	3
8	461	1	5
9	121	17	3
Out	2530		34
10	360	5	4
11	233	10	4
12	391	2	4
13	268	11	4
14	330	8	4
15	305	6	4
16	232	16	4
17	305	14	4
18	160	18	4
In	2528		33
Out	2530		34
Total	5058		68



12th Fairway (391 yds.)



Holywell Golf Course

1924 - 1939

12th Green (391 yds.)

Holywell Golf Course Data 1924 - 1939			
Hole	Length	Stroke Index	Bogey
1	287	12	4
2	161	15	3
3	328	7	4
4	350	9	4
5	167	5	4
6	365	3	4
7	160	13	3
8	461	1	5
9	121	17	3
Out	2530		34
10	360	5	4
11	233	10	4
12	391	2	5
13	268	11	4
14	330	8	4
15	305	6	4
16	232	16	4
17	305	14	5
18	160	18	4
In	2528		33
Out	2530		34
Total	5058		68



12th Green (391 yds.)



Holywell Golf Course

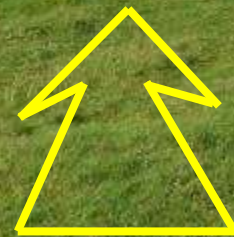
1924 - 1939

13th Tee (268 yds.)

Hole	Length	Stroke Index	Bogey
1	267	12	4
2	161	15	3
3	328	7	4
4	350	9	4
5	257	5	4
6	391	3	4
7	160	18	3
8	461	1	5
9	121	17	3
Out	2530		34
10	360	6	4
11	233	10	4
12	365	8	4
13	268	13	4
14	330	4	4
15	305	14	4
16	232	16	4
17	305	11	4
18	160	19	3
In	2528		33
Out	2530		34
Total	5058		68



13th Tee (268 yds.)

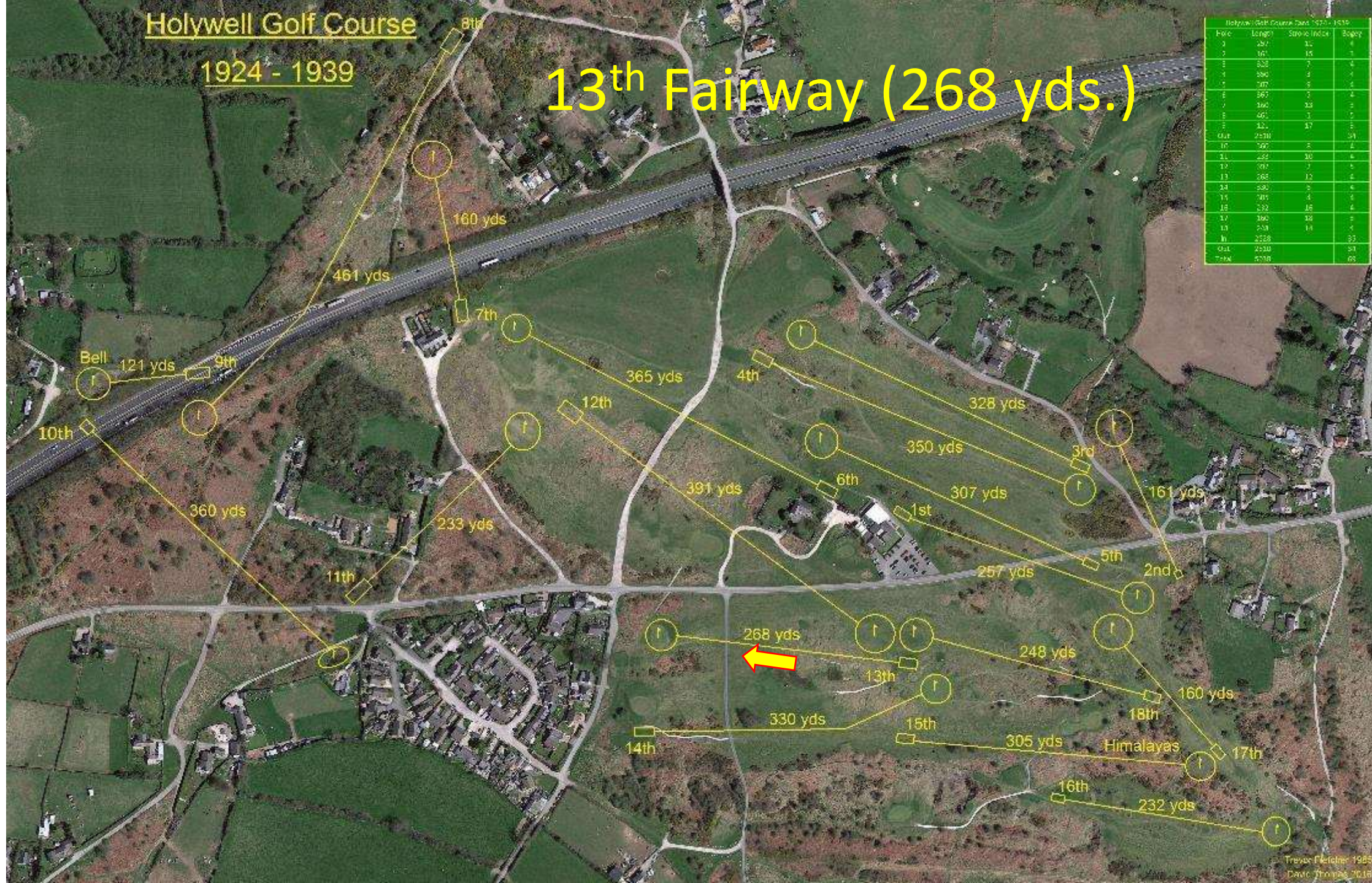


Holywell Golf Course

1924 - 1939

13th Fairway (268 yds.)

Hole	Length	Stroke Index	Bogey
1	287	12	4
2	161	15	3
3	328	7	4
4	350	9	4
5	167	5	4
6	365	3	4
7	160	13	3
8	461	1	5
9	121	17	3
Out	2530		58
10	360	5	4
11	233	10	4
12	391	2	5
13	268	11	4
14	330	8	4
15	305	6	4
16	232	16	4
17	305	14	5
18	160	18	4
In	2528		53
Out	2530		58
Total	5058		111



13th Fairway (268 yds.)

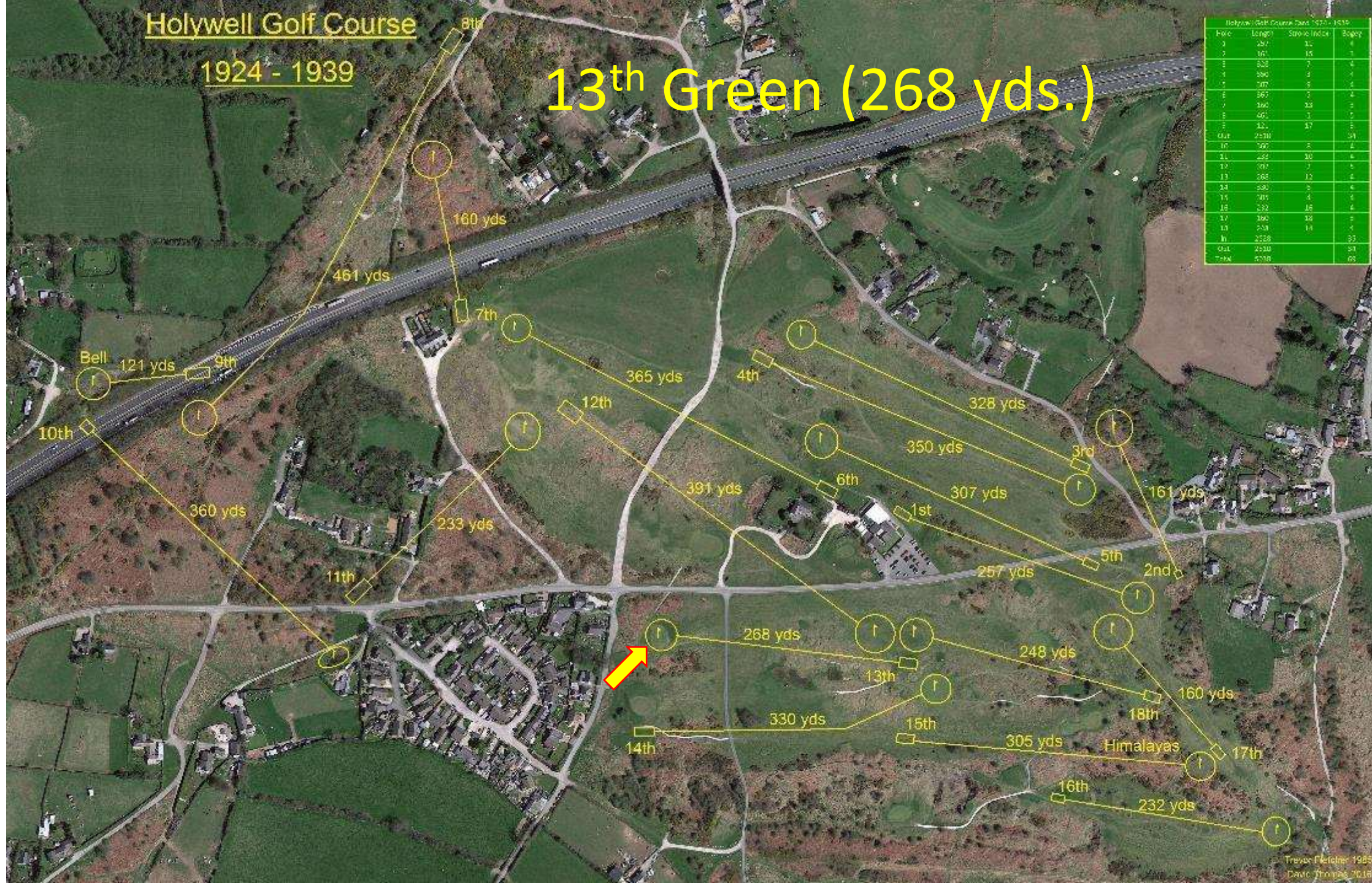


Holywell Golf Course

1924 - 1939

13th Green (268 yds.)

Hole	Length	Stroke Index	Bogey
1	287	12	4
2	161	15	3
3	328	7	4
4	350	9	4
5	167	5	4
6	365	3	4
7	160	13	3
8	461	1	5
9	121	17	3
Out	2530		58
10	360	5	4
11	233	10	4
12	391	3	5
13	268	11	4
14	330	8	4
15	305	6	4
16	232	16	4
17	305	14	5
18	160	18	4
In	2528		53
Out	2530		58
Total	5058		111



13th Green (268 yds.)

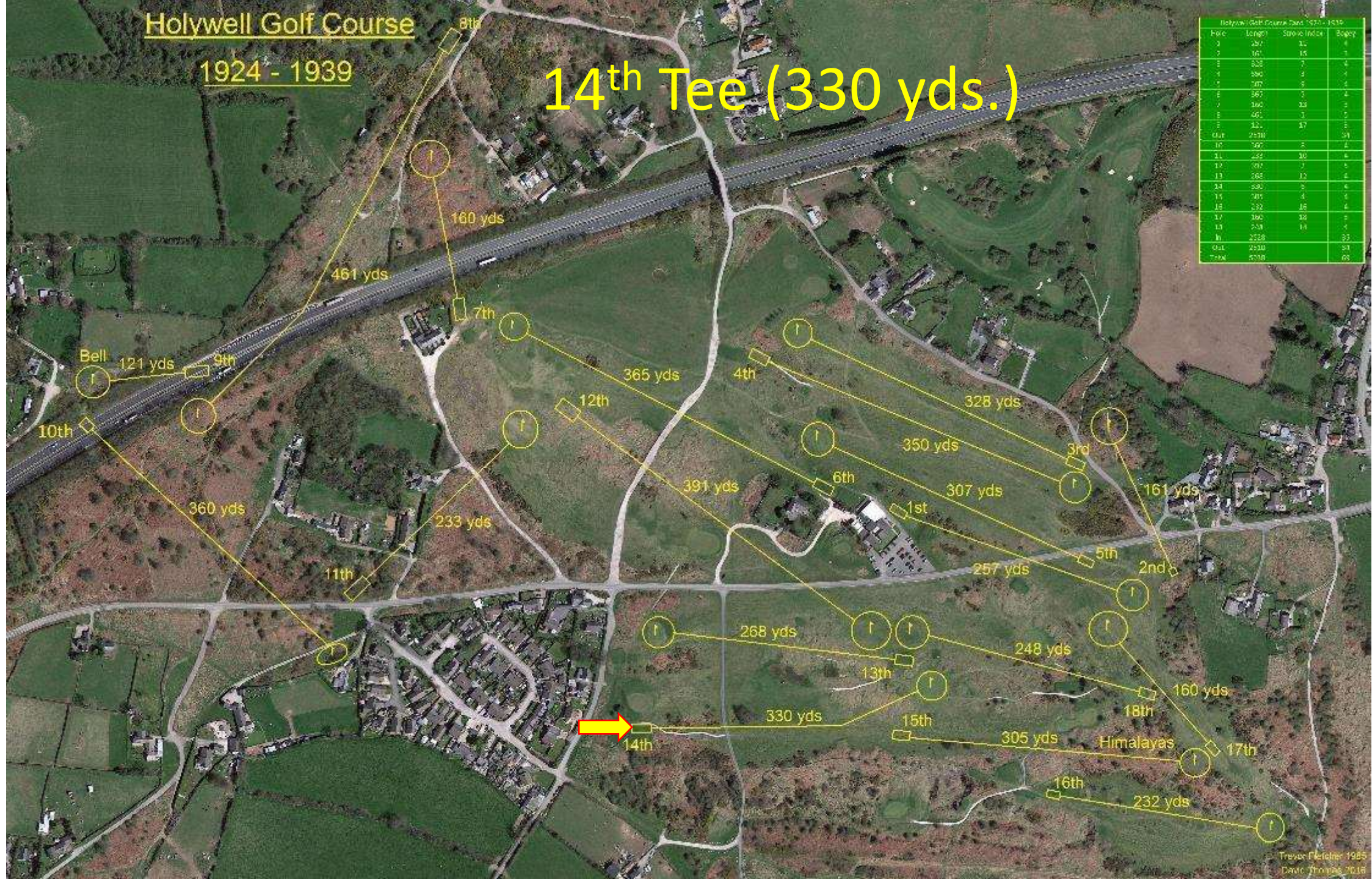


Holywell Golf Course

1924 - 1939

14th Tee (330 yds.)

Holywell Golf Course Data 1924 - 1939			
Hole	Length	Stroke Index	Bogey
1	287	12	4
2	161	15	3
3	328	7	4
4	350	9	4
5	167	5	4
6	365	3	4
7	160	13	3
8	461	1	5
9	121	17	3
Out	2530		54
10	360	5	4
11	233	10	4
12	391	7	5
13	268	11	4
14	330	9	4
15	305	6	4
16	232	16	4
17	305	14	5
18	160	18	4
In	2528		53
Out	2530		54
Total	5058		107



14th Tee (330 yds.)

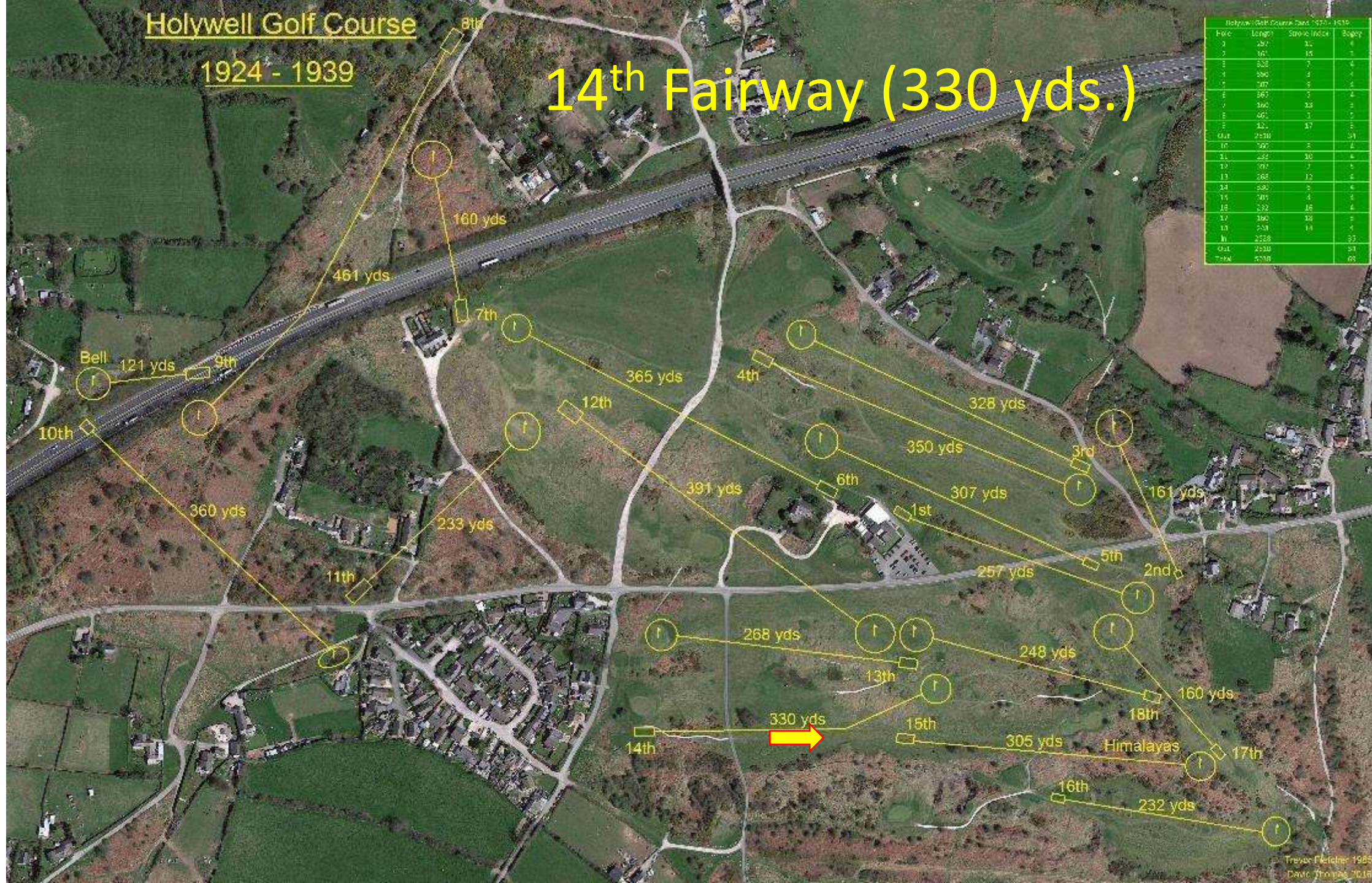


Holywell Golf Course

1924 - 1939

14th Fairway (330 yds.)

Hole	Length	Stroke Index	Bogey
1	287	12	4
2	161	15	3
3	328	7	4
4	350	9	4
5	167	5	4
6	365	3	4
7	160	13	3
8	461	1	5
9	121	17	3
Out	2530		34
10	360	5	4
11	233	10	4
12	391	2	5
13	268	11	4
14	330	8	4
15	305	6	4
16	232	16	4
17	305	14	5
18	248	18	4
In	2528		33
Out	2530		34
Total	5058		68



14th Fairway (330 yds.)



Holywell Golf Course

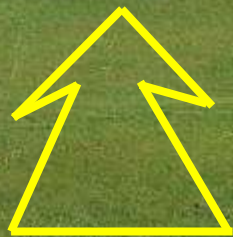
1924 - 1939

14th Green (330 yds.)

Hole	Length	Stroke Index	Bogey
1	287	12	4
2	161	15	3
3	328	7	4
4	350	9	4
5	167	5	4
6	365	3	4
7	160	13	3
8	461	1	5
9	121	17	3
Out	2530		58
10	360	5	4
11	233	10	4
12	391	3	5
13	268	11	4
14	330	8	4
15	305	6	4
16	232	16	4
17	305	14	5
18	160	18	4
In	2528		53
Out	2530		58
Total	5058		111



14th Green (330 yds.)

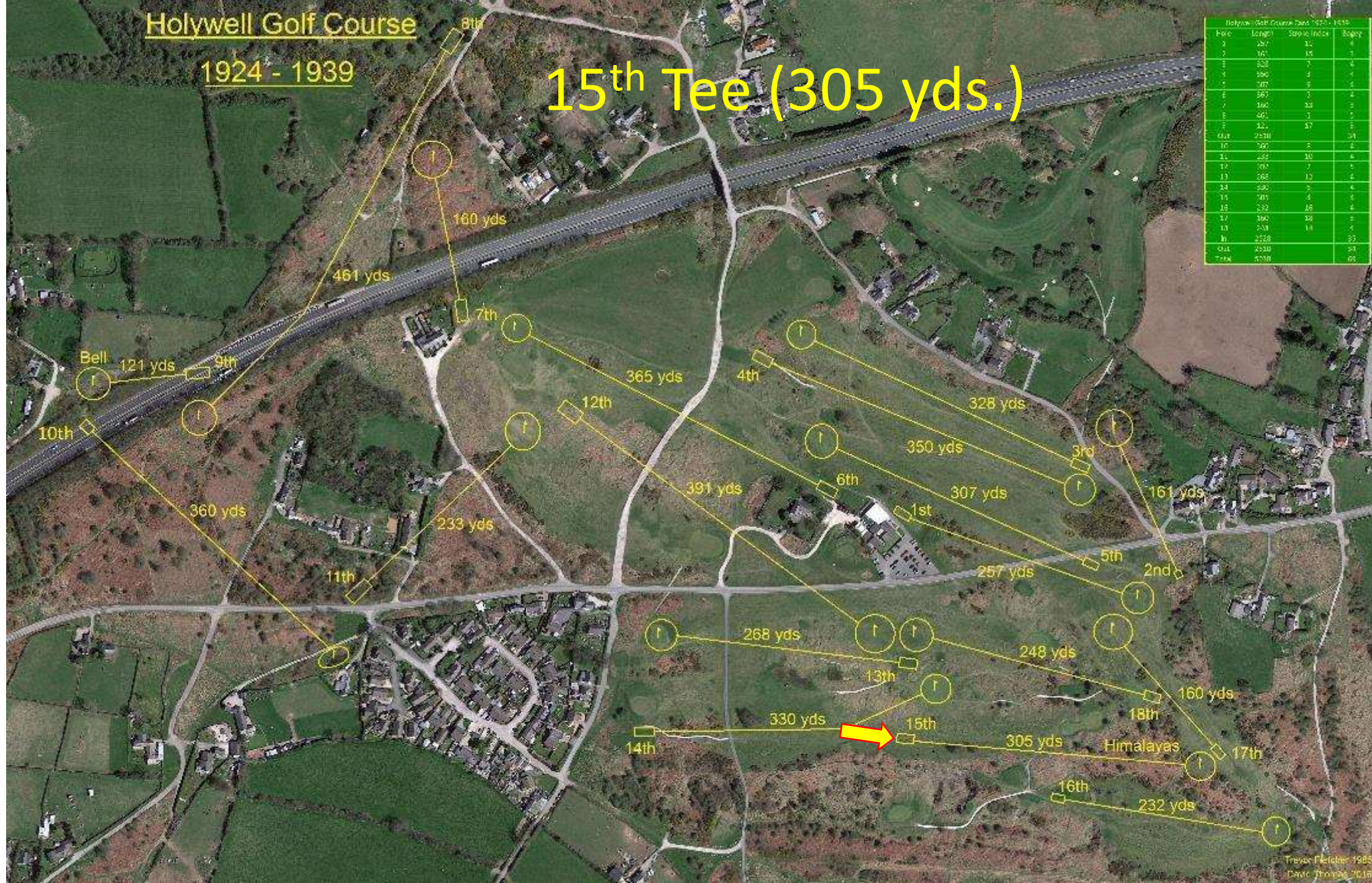


Holywell Golf Course

1924 - 1939

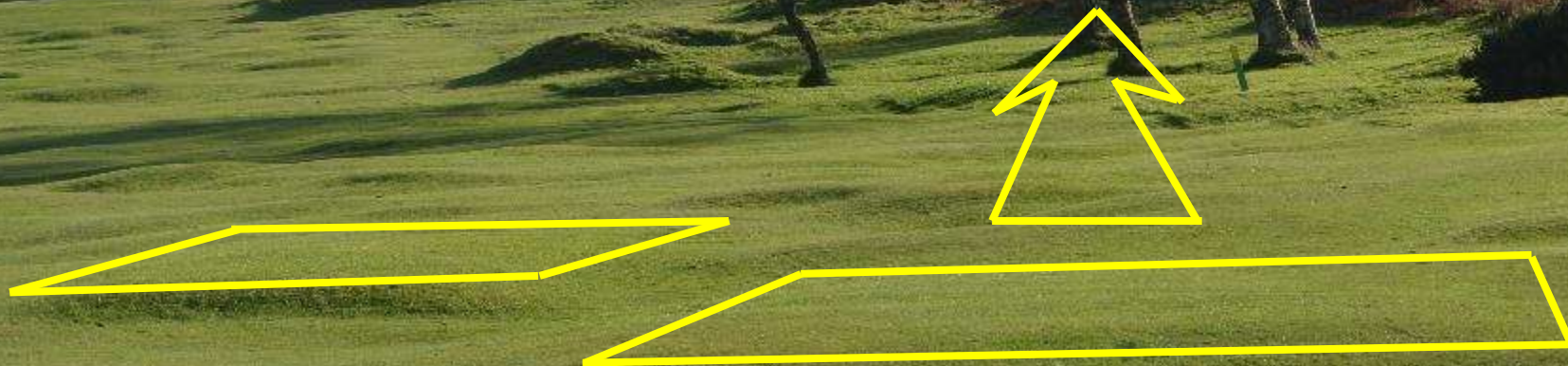
15th Tee (305 yds.)

Hole	Length	Stroke Index	Par
1	287	12	4
2	161	15	3
3	328	7	4
4	350	9	4
5	167	5	3
6	365	3	4
7	160	13	3
8	461	1	4
9	121	17	3
Out	2530		34
10	360	5	4
11	233	10	3
12	391	7	4
13	268	12	3
14	330	9	4
15	305	6	3
16	232	15	3
17	160	13	3
18	248	14	4
In	2528		33
Out	2530		34
Total	5058		68



15th Tee (305 yds.) “Himalayas”

No trees in 1924!

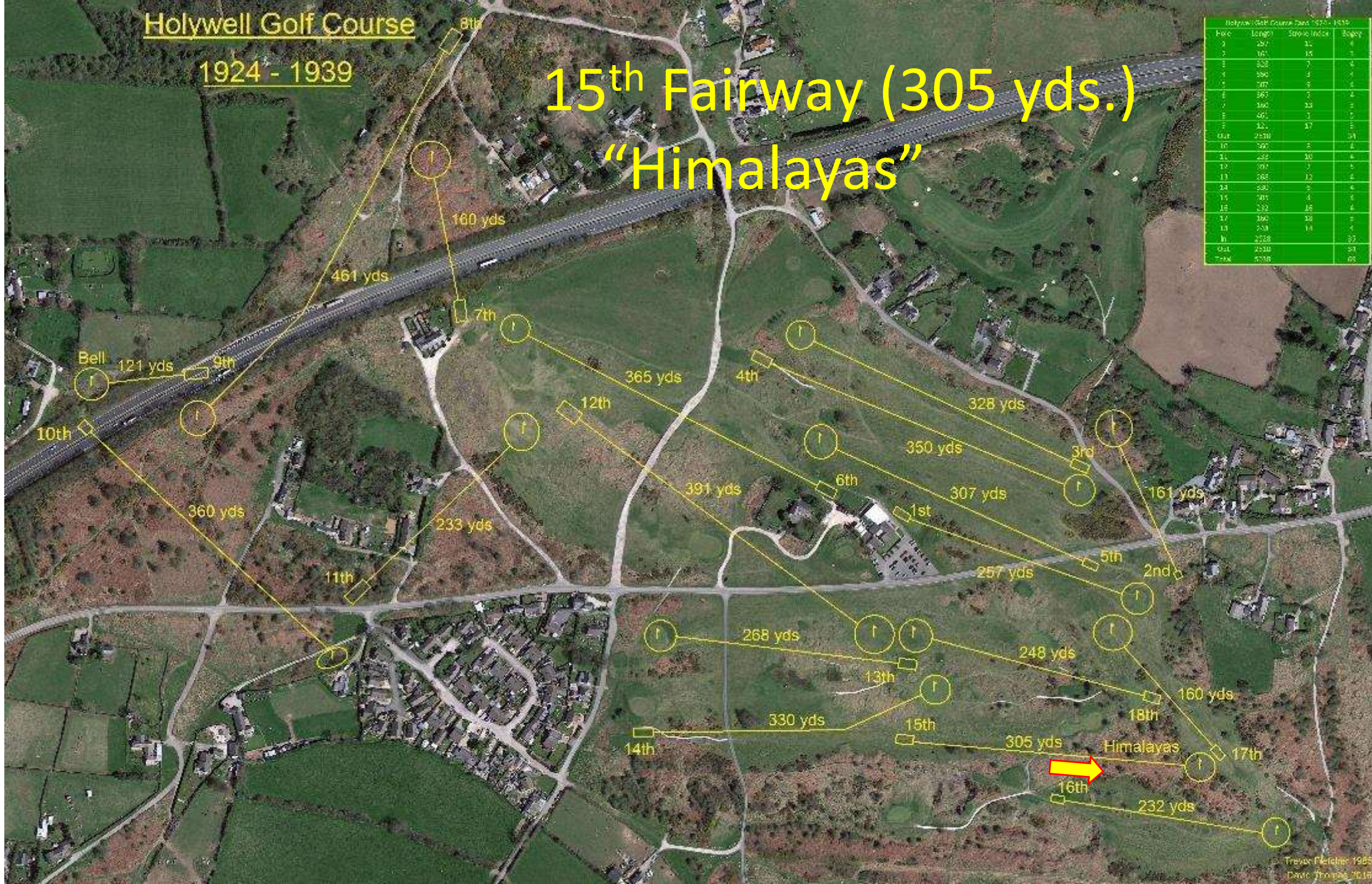


1924 - 1939



15th Fairway (305 yds.)
"Himalayas"

Year	Highway	Self-Storage Units	Value	Index	Supply
1970	1	161	15	1	1
1971	2	167	15	1	1
1972	2	232	7	1	1
1973	3	296	7	1	1
1974	3	307	9	1	1
1975	4	367	7	1	1
1976	5	366	23	1	1
1977	6	461	3	1	1
1978	7	421	17	1	1
1979	8	2530	1	1	1
1980	10	2667	2	1	1
1981	11	282	10	6	1
1982	12	397	3	5	1
1983	13	262	12	2	1
1984	14	290	5	6	1
1985	15	305	4	5	1
1986	16	232	16	2	1
1987	17	366	18	2	1
1988	18	243	14	2	1
1989	19	2728			22
1990	20	2530			21
1991	21	2708			22



15th Fairway (305 yds.) “Himalayas”

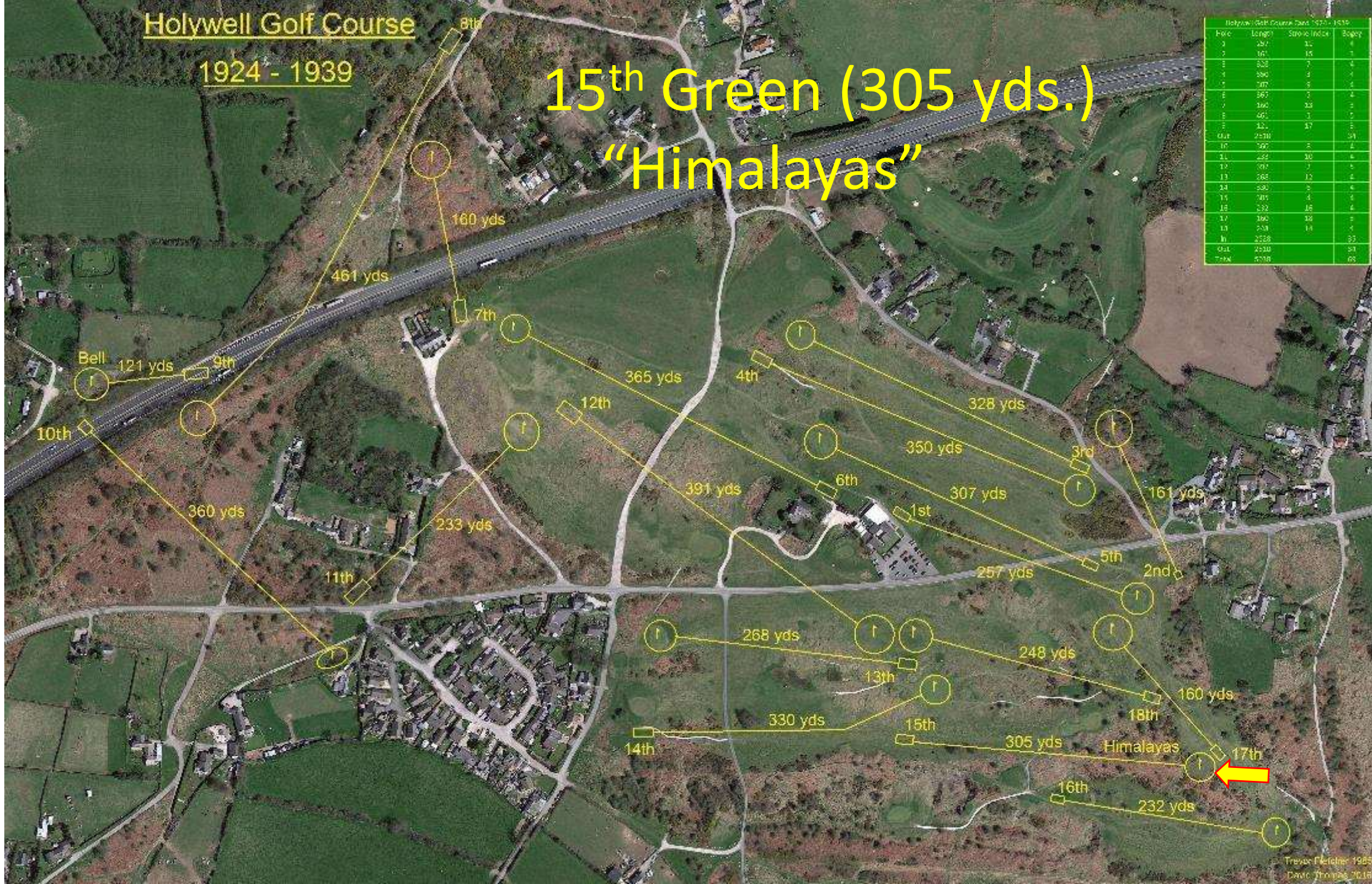


Holywell Golf Course

1924 - 1939

15th Green (305 yds.) "Himalayas"

Hole	Length	Stroke Index	Bogey
1	287	12	4
2	161	15	3
3	328	7	4
4	350	9	4
5	167	5	4
6	365	3	4
7	160	13	3
8	461	1	5
9	121	17	3
Out	2530		34
10	360	5	4
11	233	10	4
12	391	3	5
13	268	11	4
14	330	8	4
15	305	6	4
16	232	16	4
17	305	14	5
18	160	18	4
In	2528		33
Out	2530		34
Total	5058		68



15th Green (305 yds.)
“Himalayas”



Holywell Golf Course

1924 - 1939

16th Tee (231 yds.)

Hole	Length	Stroke Index	Bogey
1	287	12	4
2	161	15	3
3	328	7	4
4	350	9	4
5	167	5	4
6	365	3	4
7	160	13	3
8	461	1	5
9	121	17	3
Out	2530		58
10	360	5	4
11	233	10	4
12	391	3	5
13	268	11	4
14	330	8	4
15	305	6	4
16	232	16	4
17	305	14	5
18	160	18	4
In	2528		53
Out	2530		58
Total	5058		111

