

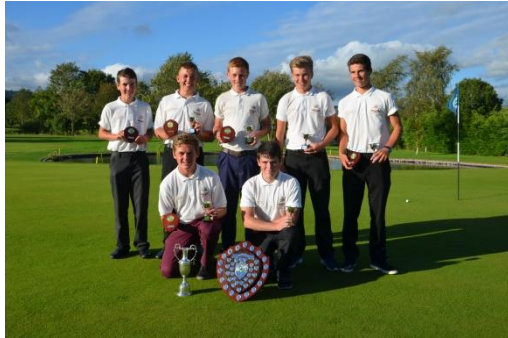
# SEASCALE GOLF CLUB

## NEWSLETTER

### Autumn 2014



#### Junior Champions



The year of the young ones continued on Sunday 31<sup>st</sup> August as Seascale's Junior Scratch Team became Champions of Cumbria in the finals at Carus Green. This is the first time Seascale have been winners since the start of the Championships in 1977. The morning round saw the team of Luke Howorth, Tom Wright, Alex Amor, Patrick Brennan, Jonathan Conaghan (Captain) and James Wallace beat Carlisle 3 ½ to 2½. In the afternoon match James Wallace made way for Joseph Brennan and the team repeated their success by beating Windermere by 4 to 2 and take the title.

The lads went on to the Northern Counties finals in Lancashire on 28<sup>th</sup> September but were up against tough competition so didn't go further this year. Well done lads – roll on next year.

#### AGM AGM AGM AGM

**Wednesday 26<sup>th</sup> November 7.45pm**  
**New talent required.**  
**You can make a contribution**

#### Well Done One-and-All

Since May we have been seeking feedback from visiting parties asking what they thought of our course and facilities. The response has been very positive and constructive. It isn't often that customers take the time to express their appreciation to our staff. I'm sure everyone will wish to join our recent visitors in thanking all our staff for providing visitors and members with a very positive golfing experience in 2014.

*Just an email to let you know about are recent visit to Seascale Golf Club. From the moment we booked it to leaving on Friday everything was done to make sure everything went smoothly and that we enjoyed our day. Booking was easy and Kirsty gave us all the information needed and answered any questions we had. When we arrived we were greeted by two members of staff (I didn't get their names) but we were greeted with a smile and shown where all the facilities were and if I had any questions they were answered. Once the whole party arrived they asked us when we would like our tea and coffee with our bacon sandwiches and the chef was polite and again had a smile on his face. Every member who we came cross was interested where we had travelled from and were very helpful in giving us course advice and we were made to feel very welcome. The course was in great condition and everyone enjoyed it even if their golf wasn't the best. Please can you pass this on to the greens staff, who I know work very hard to look after the course. Again after we had finished we were well looked after and a few lads got some food and again this was excellent. From start to finish your staff did everything they could to look after us and made us feel welcome. I will be visiting again in the near future and would recommend your club to any golfer. Once again thanks for everything and please pass this on to all the staff and members.*

*Many thanks*

*PA*  
*26 September 2014*

## Seascale's Journey



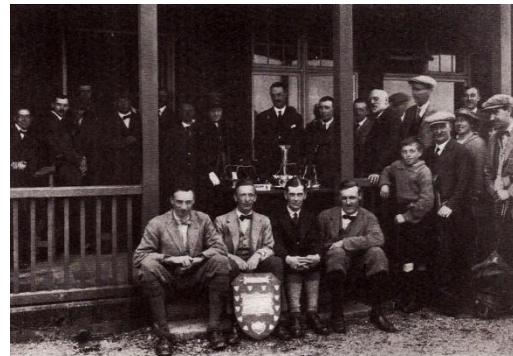
If early plans for Seascale had come to fruition with an extensive promenade, villas, hotels and guest houses most of the way to Sellafield, then Seascale Golf Club might have developed elsewhere – perhaps even at Sellafield or Drigg. Thankfully, on the crest of the spread of the ‘Scottish game’ into late Victorian Britain, the members were able to establish their course as one of the earliest in Cumbria on what is now a superb piece of traditional rolling links. Essentially the initiative of local residents in 1893, its success in attracting visitor revenue quickly resulted in the provision of a substantial three-story clubhouse on its present location. The first nine holes were laid out by Willie Campbell of Bridge of Wier, and in 1899 the course was extended to 18 holes by George Lowe of Lytham St Annes Golf Club. In the years up to the First World War the Club went from strength to strength attracting many exhibition matches including that between Sandy Herd of Huddersfield and the legendary Harry Vardon, the Open Champion for 1902.



*An early exhibition match H. Vardon putting on the 15th Green.*

The Club was lucky to have as its Professional – Greenkeeper – Club-maker - Mr C C Anderson who served the Club dutifully for 42 years starting at a wage of £1 per week. The first Steward of the Club might be considered to be a Mrs Skinner who was engaged to provide teas from the ladies room of the early hut-style clubhouse, but it wasn't long before better facilities were required. The new clubhouse was completed and opened by Lord Muncaster in January 1907 with a luncheon for 74 members and friends. Members joining fee was 3 guineas and the annual subscription £1 11/6 in 1908, and typical bar prices for members and visitors were:

Whisky	per glass	4d	(Today worth £4 – but how big was a glass?)
Lager	per bottle	3d	
Stout	per bottle	3d	
Stone Ginger	per bottle	2d	
Shwepps(spirit)	per bottle	2d	
J & B Soda		3d	
J & B Dry Ginger		3d	
Cider		3d	



**1920 THE COUNTY CHAMPIONS**

*The victorious team messrs STOUT, ARMSTRONG, MELROSE and WALKER are sitting in the front row with the trophy. Also in the picture - Mrs. Stout, the lady wearing the hat at the rear, the man with the beard is Mr. Gosard the secretary. The boy is Lonsdale Hartley (brother of Selwyn) and the lady Mrs Hartley.*

Post-First World War was a period of establishment of the playing reputation of the Club, winning the County Championships at home in 1920 and again in 1931 at Workington with players like Stout, Armstrong, Melrose and Walker. Bill Stout was perhaps the finest player to come out of the Club winning the English Championships in

1930 and going on to gain Walker Cup honours in 1930 and 1932. However, the inter-war years were testing to say the least on Club finances and with the Second World War things got even worse with staff shortages, drastic cuts in membership and visitors meaning that maintenance suffered to such an extent that the course was reduced to 14 holes. Matters indoors were just as bad as the dining room closed and whisky sales were reduced to a bottle and a half per week through rationing – and there was a ban on ‘treating’ at the bar.

The austerity period up to the late 1950’s saw the Club trying to drag itself back into a solvent position and by 1957 a motion to increase membership fees by 40%, making men’s subscriptions £10 10/- and ladies’ £7 7/- seemed to push things back on track. A major step forward was taken in the early 1960’s as the Club went on to purchase the land that had up until that point been rented under lease. A much needed extension to the Clubhouse was required to accommodate the needs of the growing membership and this was completed by mid-1967 with ‘basket suppers’ supplied on the opening night. The quality of golf was improving steadily and names like French, Gulliksen, Richardson, Stavert, Hartley, Long, Walls, Clucas and Rushton became regulars on the County circuit. By 1976 a new team had taken over with Dave and Sandra Tomkinson as steward and stewardess, Tony Bacon as professional and Ron Brown as greenkeeper.

The periods of high inflation in the 70’s and 80’s nevertheless meant the Club had to run fast to try to keep its head above water. But the efforts of the likes of Jim Woods, Don Blythe, Harry Graham and others meant that the Club with a supportive membership could enter its second century

acquiring more land to be used as a driving range and provide the necessary room for expansion. The Club could also contemplate and complete in the mid-90s a much needed refurbishment of the Clubhouse providing improved locker rooms, bar, lounge, dining room and catering facilities. Talent still oozed out with Glen Shuttleworth and Simon Young foremost in the new but now recumbent talent – might we expect some of our low handicappers to emulate their achievements sometime soon? With the new millennium the popularity of the game saw a new course at Whitehaven, a major attraction on the doorstep for many Seascale members, leading to a drift of membership – and as with every club nationally the economic climate post-2007 posed severe financial problems. However, the Seascale Club has ridden these stormy seas and finds itself in much calmer waters, with its superior course, excellent facilities and buoyant visitor numbers.

Up to the 1980’s the Club still reflected the good old colonial-style appearance with plenty of rules to keep members, visitors – and ladies in check. The Club was, like most golf clubs, rather slow to give ladies their rights, keeping them out of the gentlemen’s bar, accessed only by a hole in the wall. A bit unfair on what was often 40% of its membership. As it reached its centenary in 1993 there were moves to a more accommodating environment, made more immediate by the grants from the Sports Council etc towards the refurbishment of the Club, which required the encouragement of equal opportunities for all. More recently in 2011, the Seascale Club cast off what was to some the stuffy image and threw its doors open to the wider public. Not a lot of people know that – one might say.

The Club is now on a journey to make its facilities available to the wider community. Its situation, with that magical vista over the Wasdale Valley up to Scafell, surely gives it the most desirable view in Britain, perfect for any organisation wishing to book its conference facilities, or for anyone wishing to book that special christening, birthday, retirement or any other special event. Kirsty Johnson the House Manger and Richard Minniken Head Chef are cooking up quite a recipe to entice people into the Clubhouse.

## Welcome to 'The Clubhouse'

In keeping with the aim of attracting a wider customer base, our facilities are now being marketed as 'The Clubhouse.' – as announced in the most recent edition of the Seascale Guide, itself undergoing a change of name to 'Tethera' – Good luck to both.

**THURSDAY & SATURDAY (6-9pm)**  
STEAKS, FULL MENU & SPECIALS

**THE CLUBHOUSE**  
@  
**SEASCALE GOLF CLUB**

**BAR AND CATERING**  
Fantastic new eating venue.  
Fully refurbished bar and lounge area (families welcome).  
New Chef with an exciting menu range (takeaways available).  
Popular Steak Night every Thursday 6.00 to 9.00pm (book early to avoid disappointment).  
All food locally sourced to ensure best quality for you.  
Coming soon – outside dining area.  
Entertainment nights – Race Night, Casino Night, Tribute Acts, Cabaret etc.  
Excellent value, keenly-priced food and drink in a relaxing atmosphere.

**FUNCTIONS**  
Christenings - Birthdays - Retirements - Weddings  
Whatever your event we can make it a perfect day.

**CONFERENCE VENUE**  
Seating for up to 24.  
Lunches and refreshments throughout the day.  
WiFi.  
Projector & screen.  
Flip charts.  
Team building exercises catered for.  
Privacy and service.  
Unbeatable rates.

**BONFIRE & FIREWORKS @ SGC**  
**7 NOVEMBER**  
Bonfire 6.45pm Fireworks 7pm

**WINTER GREENFEES**  
Full Round £20 weekdays. £25 weekend & bank hols  
Late Start golf from £10  
Four Ball Specials weekday £64 (Sat only £80)  
Four Ball Winter Warmer, 18 holes of golf, Soup and Sandwiches or Coffee & Bacon Buttie £80  
Catering and buggies available  
Excellent Driving Range  
Good Par 3 Short Course

Tel: 019467 28202  
Email: seascalegolfclub@gmail.com Visit our website: www.seascalegolfclub.co.uk

## On-course News

The greens staff are once again following the advice of STRI experts in breaking up the deep compacted thatch on our greens - and this year using a compressed-air decompaction system which will have minimum impact on the playing surface and the job completed over a couple of days. New seeder attachments for the Toro will mean much more efficient and effective overseeding on the greens

### Seascale Golf Club Winter Program 2014/15

#### Greens

- Overseed all greens and top dress
- Decompact all greens using Air System

#### Tees

- Overseed all tees
- Raise level of 2<sup>nd</sup> and 9<sup>th</sup> tees by approx 600mm

#### Bunkers

- General Maintenance
- New bunker right hand side 11<sup>th</sup> hole
- Fill in pot bunker right hand side 6<sup>th</sup> hole

#### Fairways

- General maintenance
- Paths general maintenance
- Buggy shed and soil shed

**Beck** – clean out beck adjacent to 10<sup>th</sup> and 13<sup>th</sup> hole reinforce banks with concrete slabs

**Greens Shed** – to carry out maintenance as per report

**Practice Ground** – Prepare practice green for next year's season