

Holywell Golf Club – The Early Years and What Lies Beneath



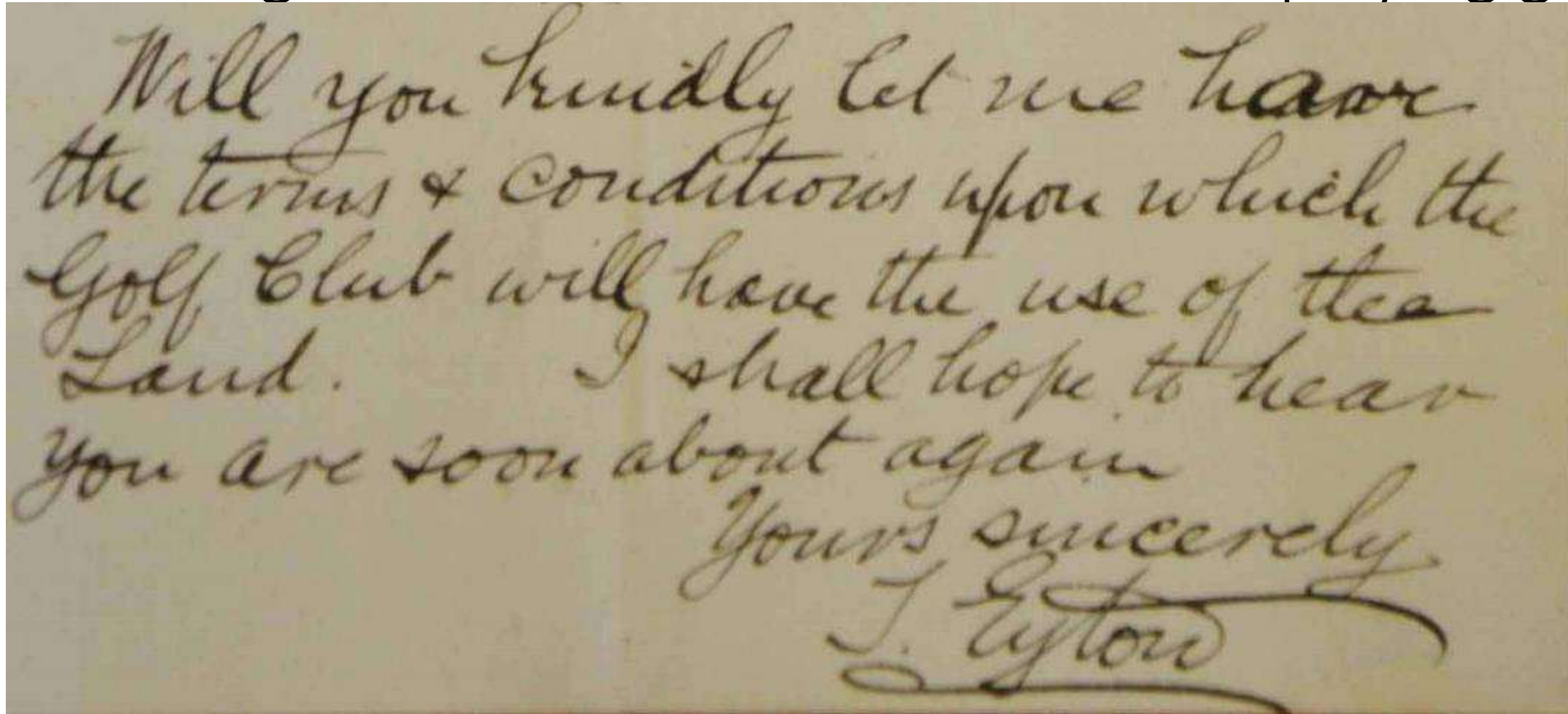
D. H. Thomas 2017

Aim of this Presentation

- The aim of this presentation is to try and flesh out some of the early history of Holywell Golf Club in the words of its early members, neighbours and also from those of the Grosvenor estates on whose land the course was built.
- It is hoped to build on the excellent club history prepared by Ray Lewis and others for the Club Centenary book in 2006.
- Where possible, photos and illustrations will hopefully help to cast a bit of light on how today's golf course has evolved since 1906.
- Regarding the land we play on, the presentation will also have a look beneath the ground surface at the massive industrial effort that took place more than one hundred years ago beneath the feet of today's golfers.

Foundation of the 9 Hole Course in 1906

March 24th 1906 – Letter from Trevor Eyton (first secretary) to Humphrey Lynes (Grosvenor Estates) asking what will be the conditions for playing golf.



Will you kindly let me have
the terms & conditions upon which the
Golf Club will have the use of the
Land. I shall hope to hear
you are soon about again
Yours sincerely,
T. Eyton

Sources:-
Grosvenor Estate Archives
& Flintshire County Council

March 25th 1906 – Reply to Trevor Eyton (first secretary) from Humphrey Lynes (Grosvenor Estates)

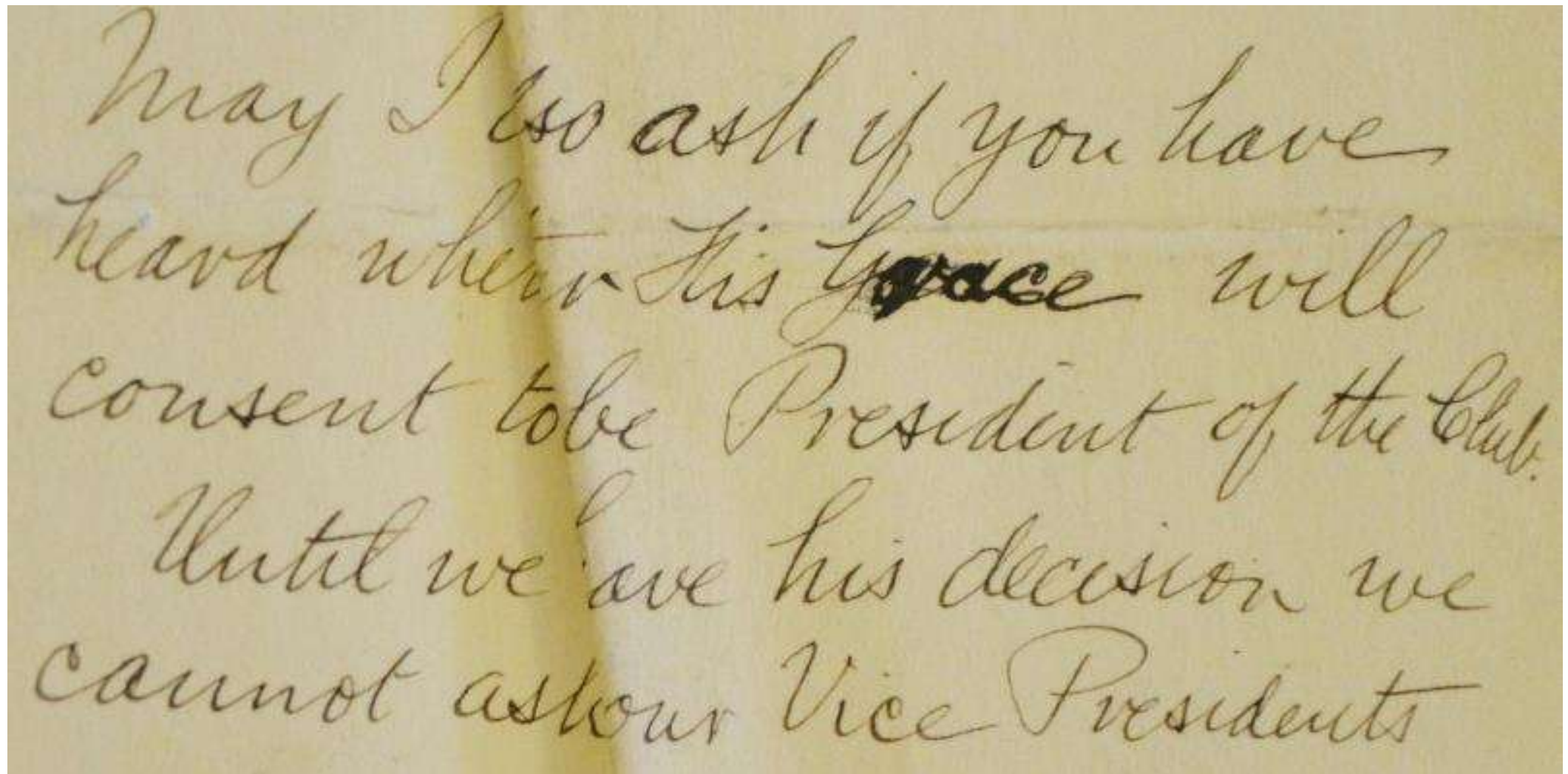
You may take it for granted that the Duke will grant the Holywell Golf Club permission to play on Brynford Common for 12 months from March 25 1906, at a rent of Ten shillings, payable on September 29 1906.

***Permission
Granted for ten
bob a year!***

March 31st 1906 – Acceptance of the annual rent by Trevor Eyton (first secretary) to Humphrey Lynes (Grosvenor Estates)

I placed your letter of
the 25th before the Committee yesterday
when it was unanimously agreed
to accept with thanks the Terms
upon which the Duke will grant the
Holywell Golf Club permission to play
on Brynford Common as set forth
in your letter

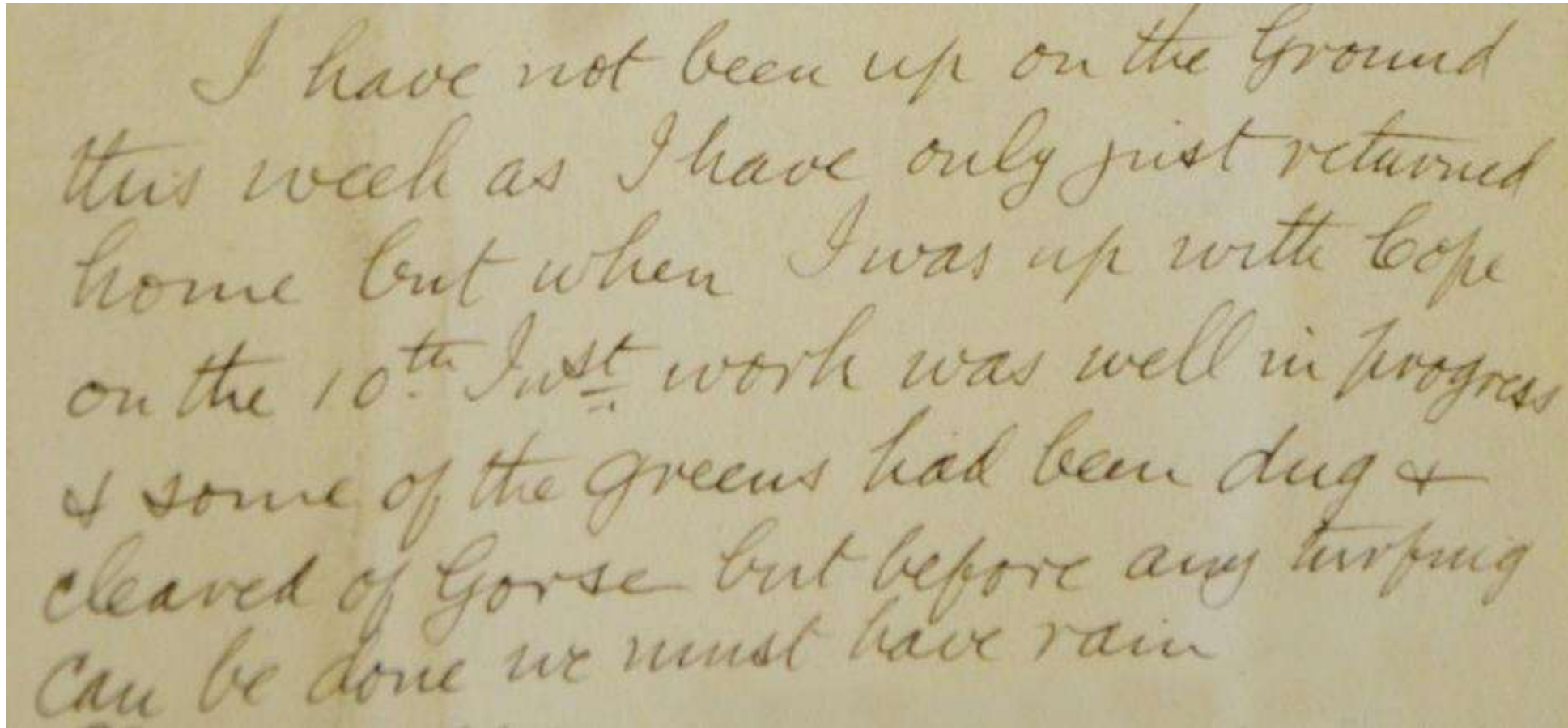
March 31st 1906 – Trevor Eyton (first secretary) asks Humphrey Lynes (Grosvenor Estates) if the Duke will become the first president of the club.

A photograph of a handwritten letter on aged, yellowed paper. The text is written in a cursive script. The first paragraph asks if the Duke will become the first president of the club. The second paragraph states that until a decision is reached, they cannot ask for Vice Presidents.

May I also ask if you have
heard when His ~~Grace~~ will
consent to be President of the Club.
Until we have his decision we
cannot ask our Vice Presidents

Sources:-
Grosvenor Estate Archives
& Flintshire County Council

April 19th 1906 – Letter from Trevor Eyton (first secretary) to Humphrey Lynes (Grosvenor Estates) advising him that work on the course was progressing.

A photograph of a handwritten letter on aged, yellowed paper. The text is written in a cursive script in brown ink. The letter is dated April 19th 1906 and is from Trevor Eyton to Humphrey Lynes. It discusses the progress of work on a golf course, mentioning that the writer has just returned home and that work was well in progress on the 10th. It also mentions that some greens had been dug and cleared of gorse, but that before any turping can be done, they must have rain.

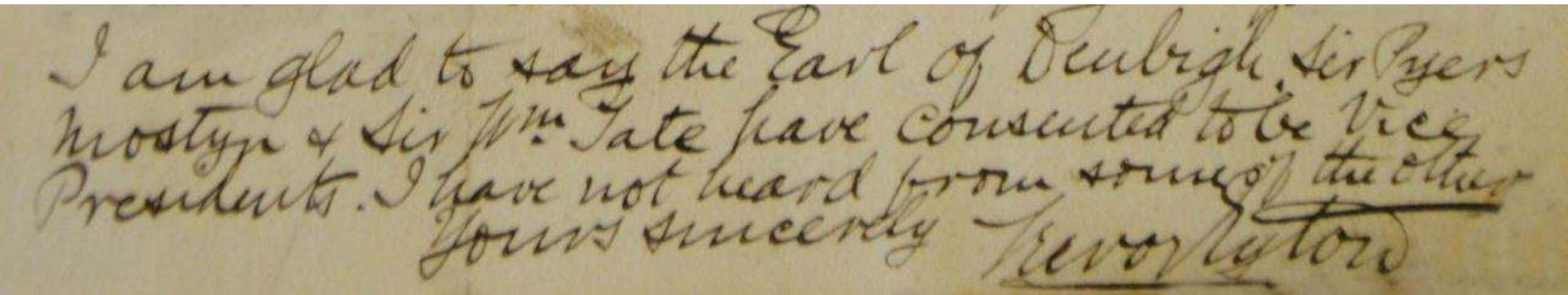
I have not been up on the Ground
this week as I have only just returned
home but when I was up with Cope
on the 10th I st work was well in progress
& some of the greens had been dug &
cleared of Gorse but before any turping
can be done we must have rain

May 12th 1906 – Note to Humphrey Lynes (Grosvenor Estates) from Eaton Hall confirming that the Duke will agree to become the first president of the club.

Eaton
Chester May 12/06

Dear Humphrey, the Duke
will be President of the
Golf Club -

May 20th 1906 – Letter from Trevor Eyton (first secretary) to Humphrey Lynes (Grosvenor Estates) naming the club's vice presidents.



I am glad to say the Earl of Denbigh, Sir Piers Mostyn & Sir Wm Tate have consented to be Vice Presidents. I have not heard from some of the other
Yours sincerely Trevor Eyton

With the Duke of Westminster as president and an Earl and two Knights as vice presidents, we had a pretty high calibre executive committee in 1906!

So what did the 1906 course look like?

Holywell Golf Course

1906 - 1923



Hole	Length	Stroke Index	Score
1	270	6	4
2	307	4	4
3	365	4	3
4	391	3	3
5	461	5	5
6	360	3	3
7	360	6	6
8	233	6	6
9	307	4	4
10	307	3	3
11	257	6	6
12	391	3	3
13	461	4	4
14	365	3	3
15	360	6	6
16	121	6	6
17	360	4	4
18	360	4	4
Out	2816	70	70
Total	5312	70	70

Here is a tour round the 1906 course!

Holywell Golf Course

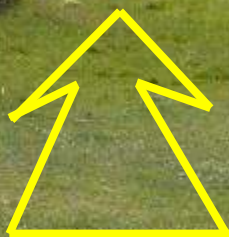
1906 - 1923

1st Tee and Green (257 yds.)



Hole	Length	Stroke Index	Par
1	257	6	4
2	307	4	4
3	391	4	4
4	365	3	4
5	160	5	5
6	461	3	4
7	360	6	4
8	233	6	4
9	365	4	4
10	257	3	4
11	307	3	4
12	391	4	4
13	365	3	4
14	160	4	5
15	461	3	4
16	360	6	4
17	233	6	4
18	365	4	4
19	257	6	4
Out	5516	35	35
Total	5312	70	70

1st Tee and Green (257 yds.)



Holywell Golf Course

1906 - 1923

2nd Tee (307 yds.)

Holywell Golf Course Card 1906 - 1923			
Hole	Length	Stroke Index	Par
1	270	6	4
2	307	4	4
3	365	4	4
4	321	3	3
5	461	5	5
6	343	3	3
7	381	6	4
8	273	6	4
9	320	4	4
10-18	2526	15	35
19	257	6	4
20	305	6	4
21	391	3	3
22	461	4	4
23	343	3	3
24	321	6	4
25	257	4	4
26	352	4	4
27	352	4	4
28	257	6	4
29	257	6	4
30	257	6	4
31	257	6	4
32	257	6	4
33	257	6	4
34	257	6	4
35	257	6	4
36	257	6	4
37	257	6	4
38	257	6	4
39	257	6	4
40	257	6	4
41	257	6	4
42	257	6	4
43	257	6	4
44	257	6	4
45	257	6	4
46	257	6	4
47	257	6	4
48	257	6	4
49	257	6	4
50	257	6	4
51	257	6	4
52	257	6	4
53	257	6	4
54	257	6	4
55	257	6	4
56	257	6	4
57	257	6	4
58	257	6	4
59	257	6	4
60	257	6	4
61	257	6	4
62	257	6	4
63	257	6	4
64	257	6	4
65	257	6	4
66	257	6	4
67	257	6	4
68	257	6	4
69	257	6	4
70	257	6	4
71	257	6	4
72	257	6	4
73	257	6	4
74	257	6	4
75	257	6	4
76	257	6	4
77	257	6	4
78	257	6	4
79	257	6	4
80	257	6	4
81	257	6	4
82	257	6	4
83	257	6	4
84	257	6	4
85	257	6	4
86	257	6	4
87	257	6	4
88	257	6	4
89	257	6	4
90	257	6	4
91	257	6	4
92	257	6	4
93	257	6	4
94	257	6	4
95	257	6	4
96	257	6	4
97	257	6	4
98	257	6	4
99	257	6	4
100	257	6	4
Total	5312	70	70



2nd Tee (307 yds.)

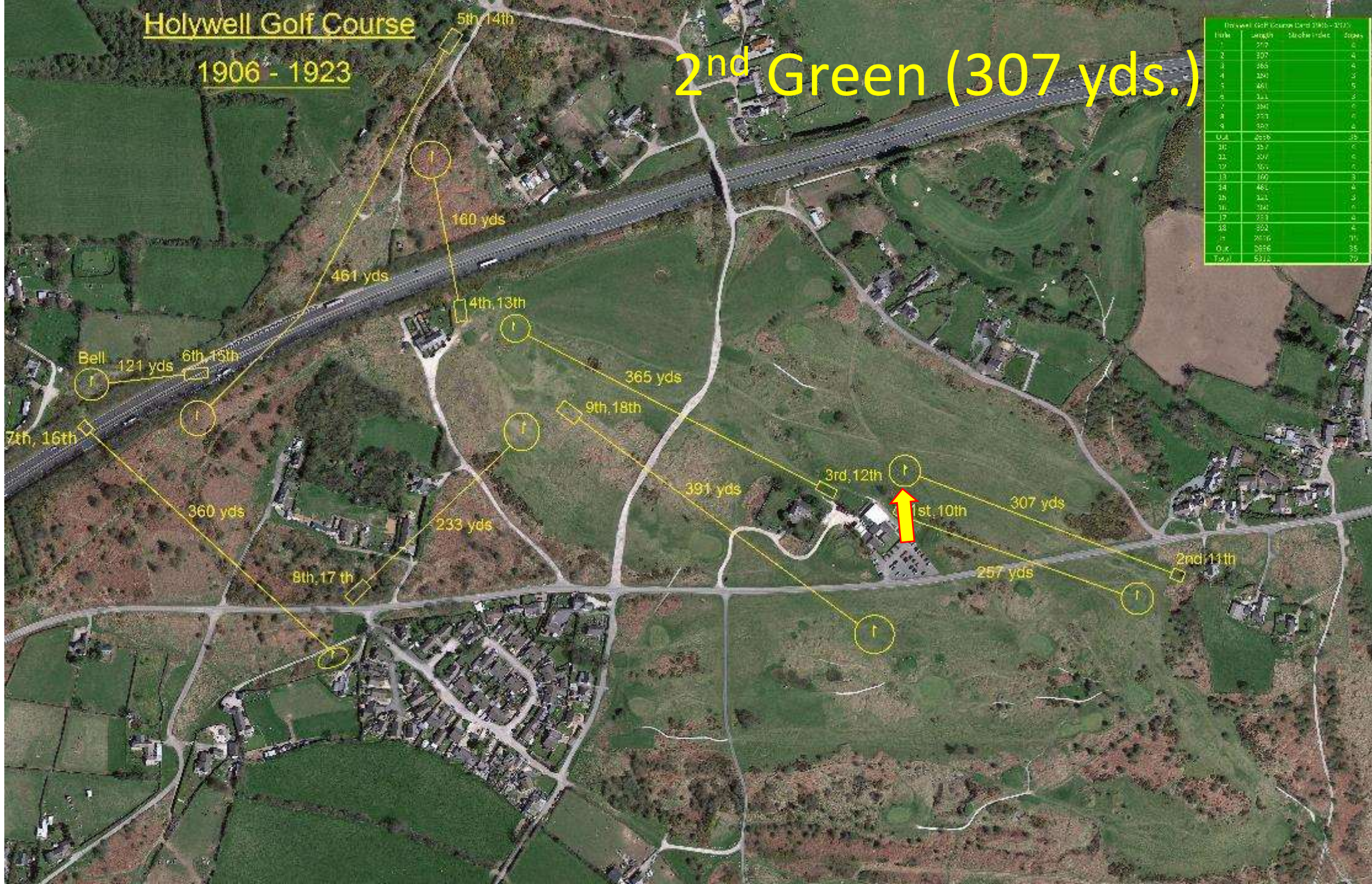


Holywell Golf Course

1906 - 1923

2nd Green (307 yds.)

Holywell Golf Course Card 1906 - 1923			
Hole	Length	Stroke Index	Par
1	270	6	4
2	307	4	4
3	365	4	4
4	391	3	5
5	461	5	5
6	360	3	4
7	391	6	4
8	257	6	4
9	360	4	4
10-18	307	35	35
19	307	3	4
20	365	4	4
21	391	3	5
22	360	6	4
23	461	5	5
24	360	3	4
25	391	6	4
26	360	4	4
27	365	4	4
28	391	3	5
29	360	6	4
30	365	4	4
31	391	3	5
32	360	6	4
33	461	5	5
34	360	3	4
35	391	6	4
36	360	4	4
37	365	4	4
38	391	3	5
39	360	6	4
40	365	4	4
41	391	3	5
42	360	6	4
43	461	5	5
44	360	3	4
45	391	6	4
46	360	4	4
47	365	4	4
48	391	3	5
49	360	6	4
50	365	4	4
51	391	3	5
52	360	6	4
53	461	5	5
54	360	3	4
55	391	6	4
56	360	4	4
57	365	4	4
58	391	3	5
59	360	6	4
60	365	4	4
61	391	3	5
62	360	6	4
63	461	5	5
64	360	3	4
65	391	6	4
66	360	4	4
67	365	4	4
68	391	3	5
69	360	6	4
70	365	4	4
71	391	3	5
72	360	6	4
73	461	5	5
74	360	3	4
75	391	6	4
76	360	4	4
77	365	4	4
78	391	3	5
79	360	6	4
80	365	4	4
81	391	3	5
82	360	6	4
83	461	5	5
84	360	3	4
85	391	6	4
86	360	4	4
87	365	4	4
88	391	3	5
89	360	6	4
90	365	4	4
91	391	3	5
92	360	6	4
93	461	5	5
94	360	3	4
95	391	6	4
96	360	4	4
97	365	4	4
98	391	3	5
99	360	6	4
100	365	4	4
Total	5312	70	70



2nd Green (307 yds.)



Holywell Golf Course

1906 - 1923

3rd Tee and Fairway (365 yds.)

Hole	Length	Stroke Index	Par
1	270	6	4
2	307	4	4
3	461	4	4
4	391	3	3
5	461	5	5
6	343	3	3
7	391	6	4
8	270	6	4
9	360	4	4
10-18	2626	10	35
19	257	6	4
20	307	4	4
21	307	3	3
22	307	4	4
23	461	3	3
24	461	4	4
25	343	3	3
26	343	6	4
27	270	4	4
28	360	4	4
29	257	6	4
30	257	35	35
Total	5312	70	70



3rd Tee and Fairway (365 yds.)

