

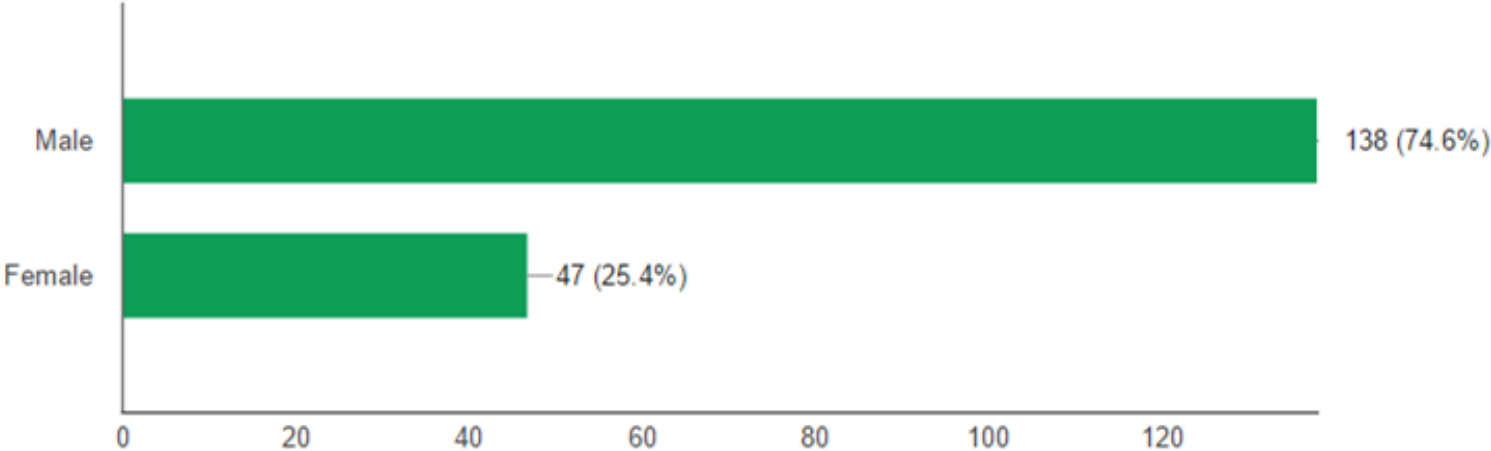
Waterford Golf Club

Members Consultation Survey Results 2016

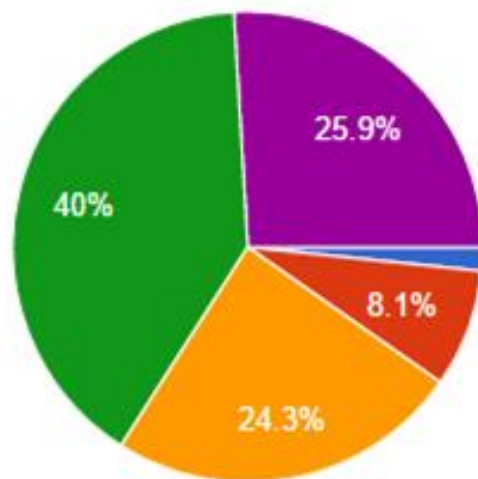


Demographics

Gender (185 responses)

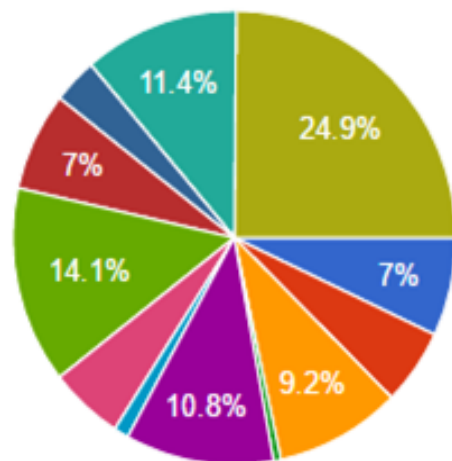


Age Category (185 responses)



- Under 20
- 20 - 35
- 36 - 50
- 51 - 65
- 66 +

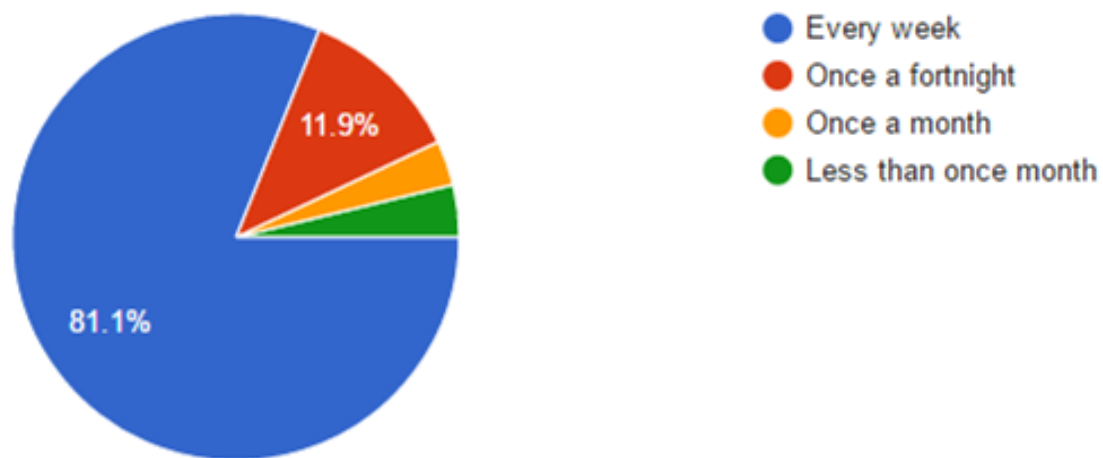
Occupation (185 responses)



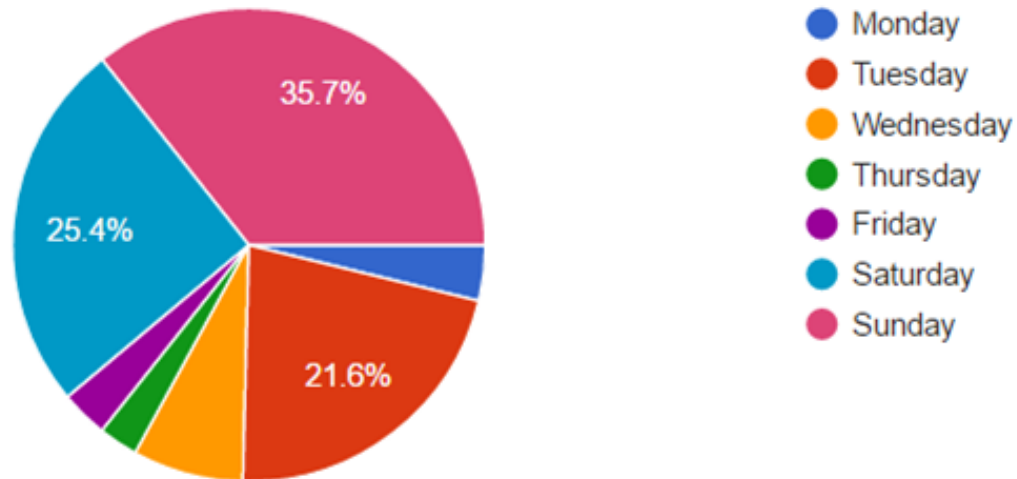
- Accountant, Banker, Financier
- Civil servant
- Company director
- Garda
- House wife/husband
- ICT (Info Comms Tech Specialist)
- Medical care
- Professional
- Trade
- Unemployed
- Vet
- Worker
- Other

Playing Details

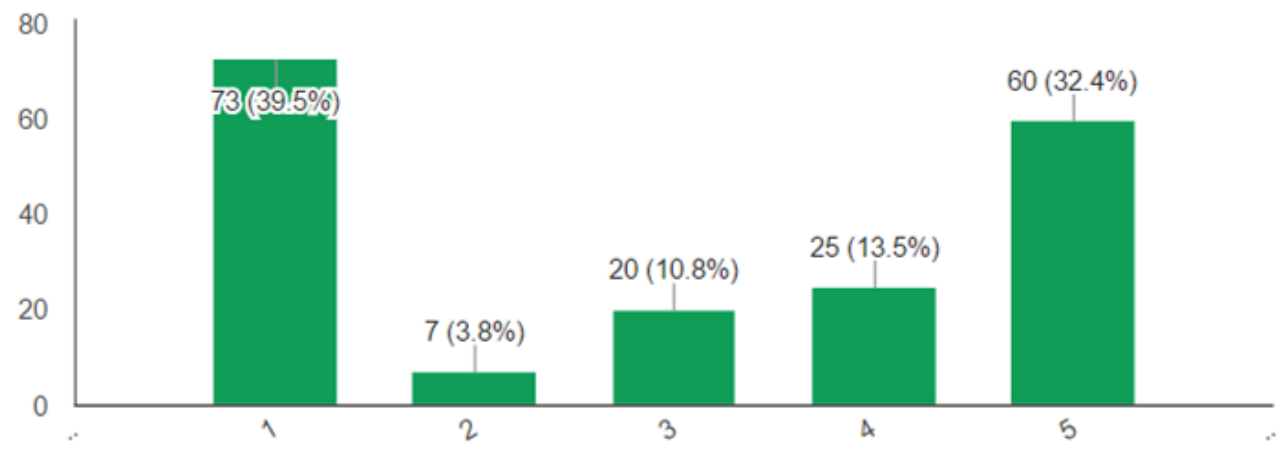
On average, how often do you play at WGC? (185 responses)



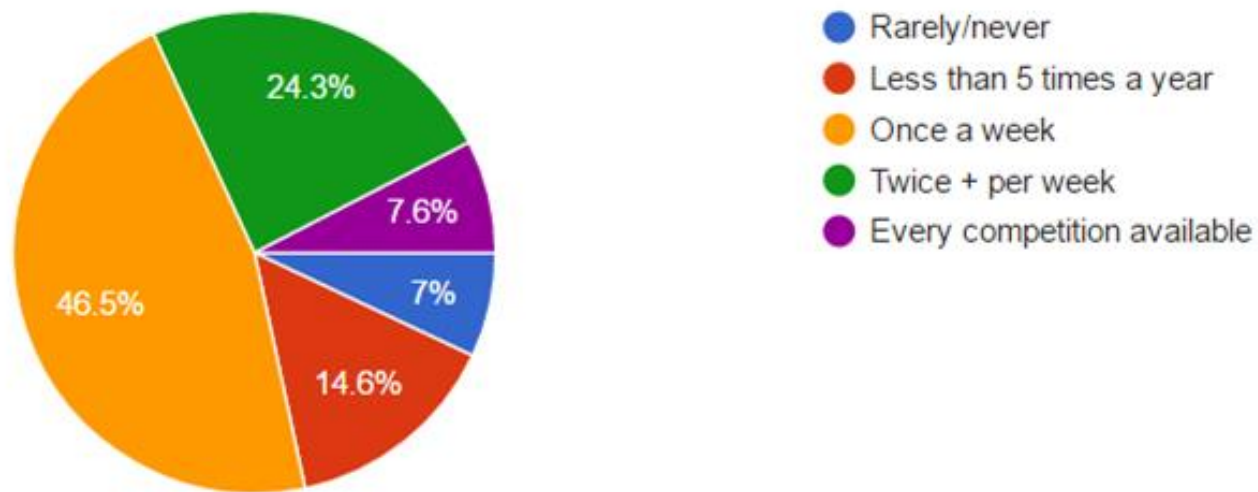
What is your preferred day to play? (185 responses)



How important is a playing slot 7.30 to 11.30 AM Sunday to you? (185 responses)

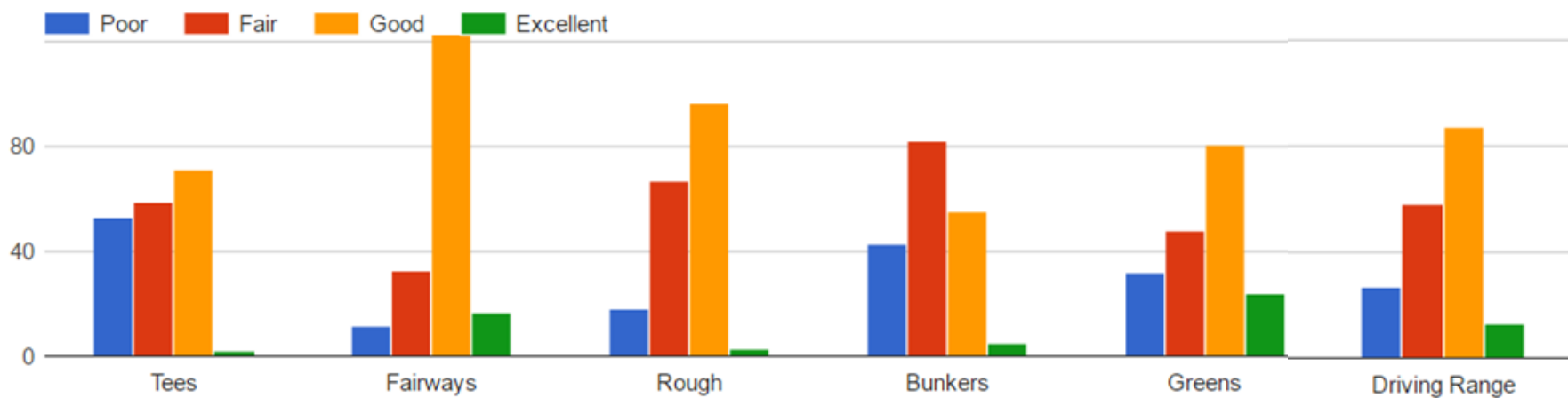


How often do you play in competitions? (185 responses)

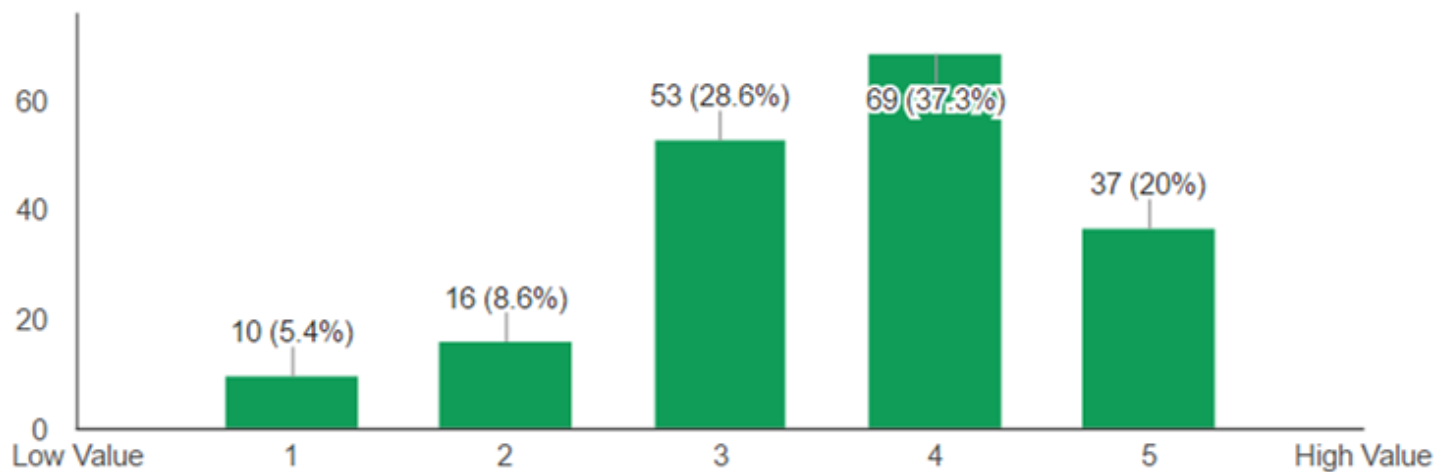


Club Facilities

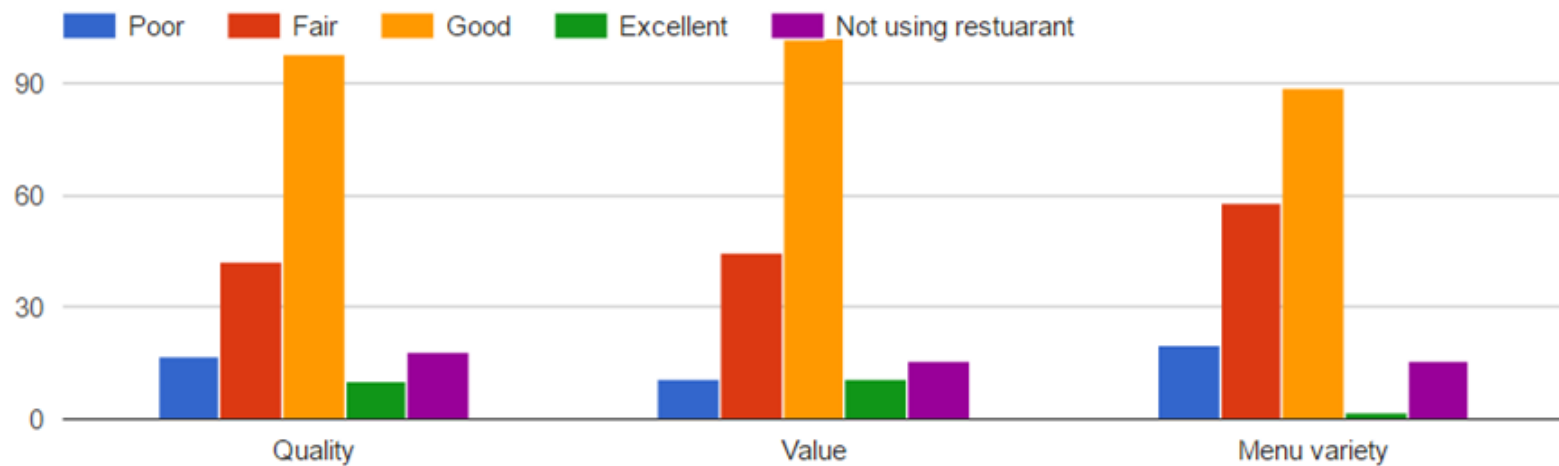
The Course



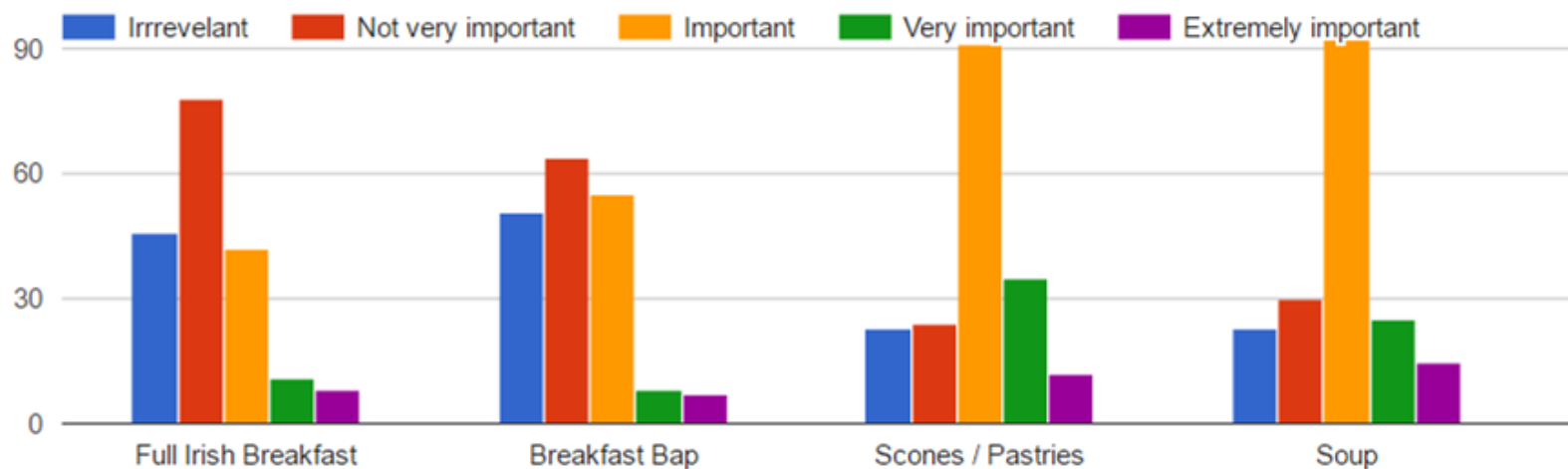
How high do you value having restaurant facilities? (185 responses)



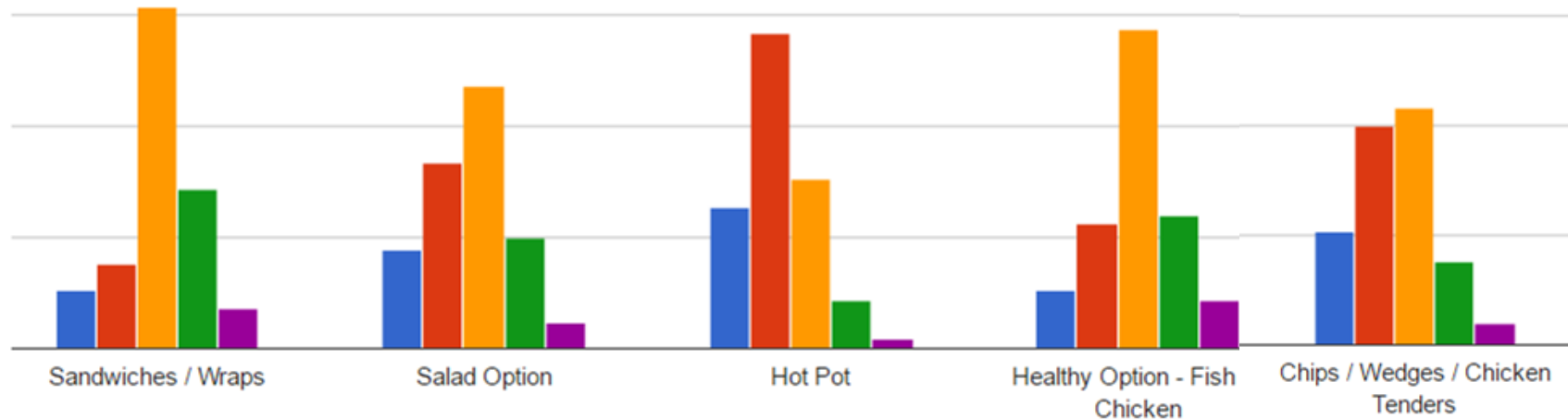
The Restaurant



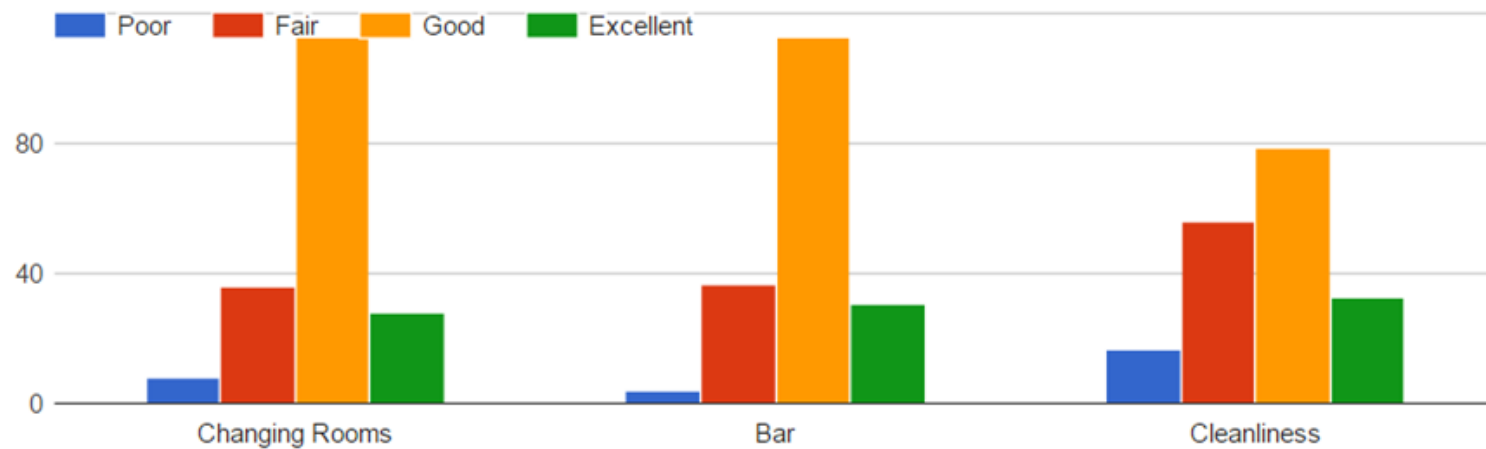
How important are the following options to you to have on the menu?



How important are the following options to you to have on the menu?



Club House

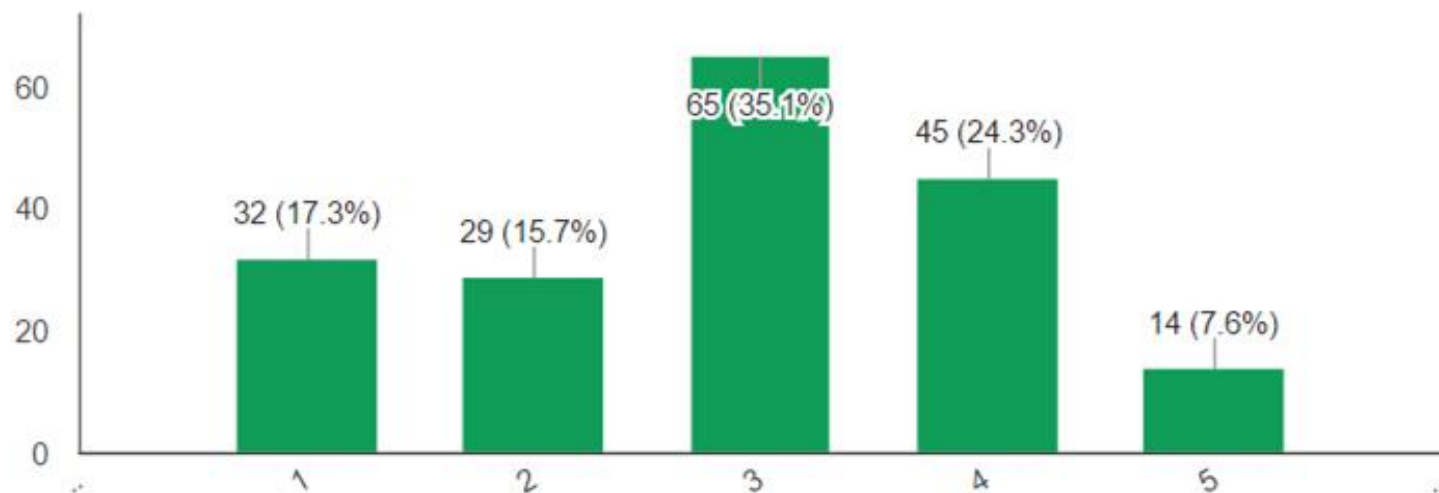


Staff

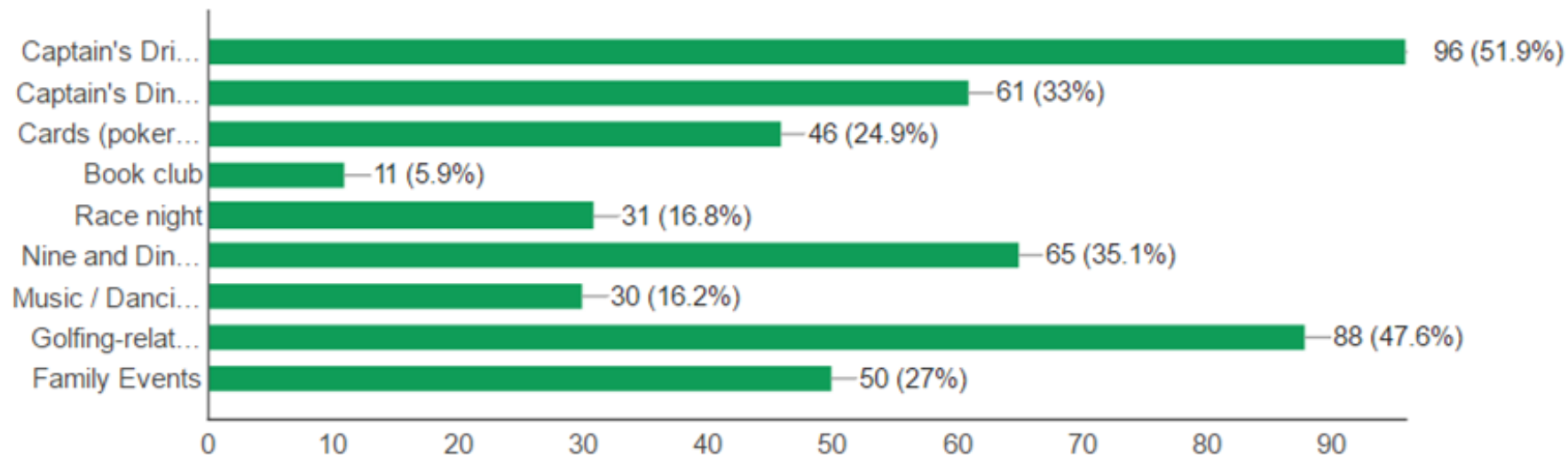


Social Events

Are social events an important aspect of the club for you? (185 responses)



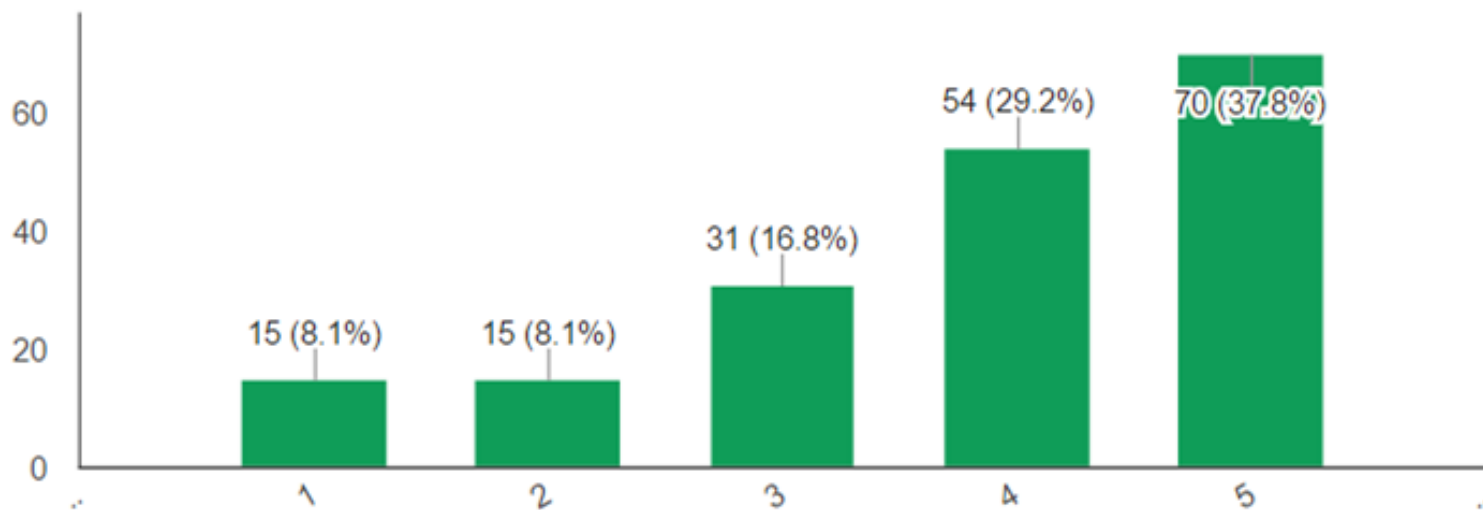
Tick any social activities that are of interest to you. (185 responses)



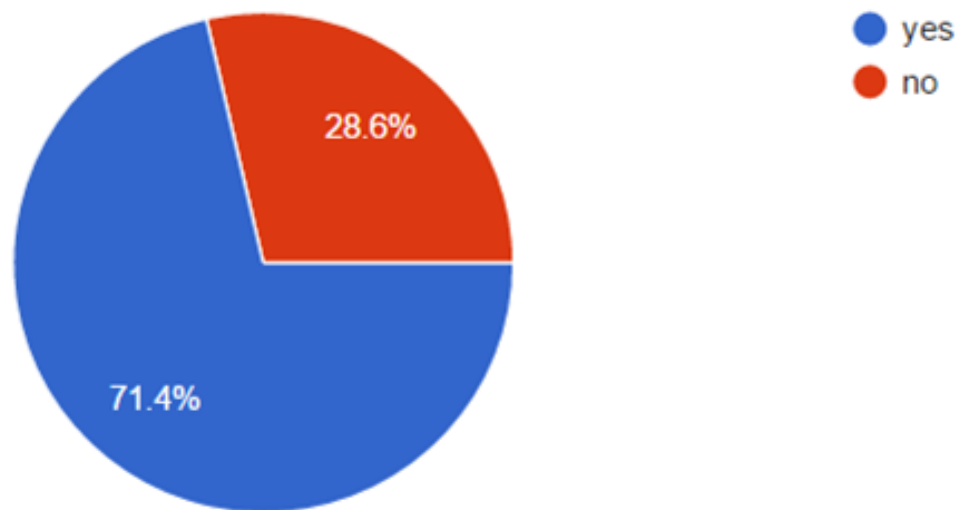
Future Development

How highly would you value a golf academy with covered driving bays?

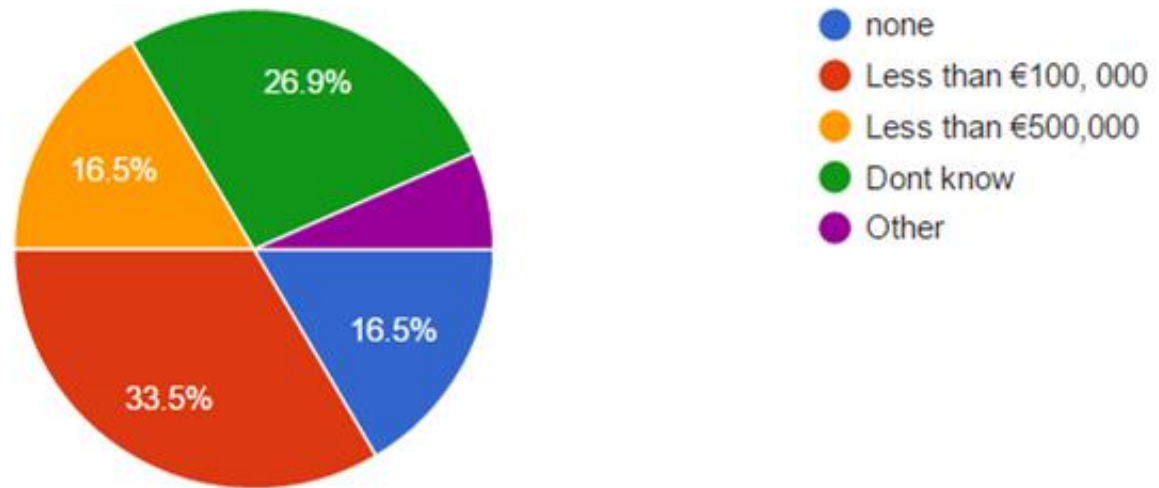
(185 responses)



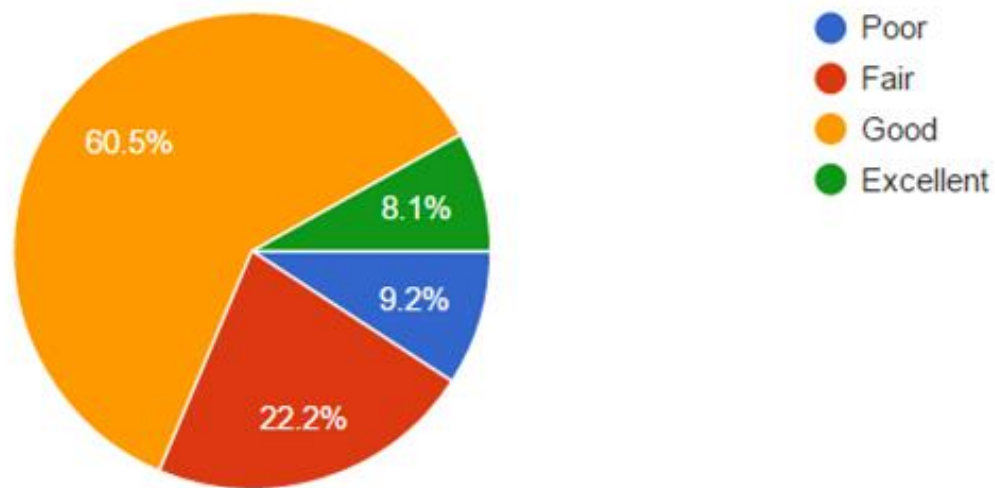
Should more use be made of volunteers in the Club? (185 responses)



What level of Bank Debt would you be comfortable with? (182 responses)



How do you rate internal communications in the club? (185 responses)



How do rate external communications in the Club? (185 responses)

